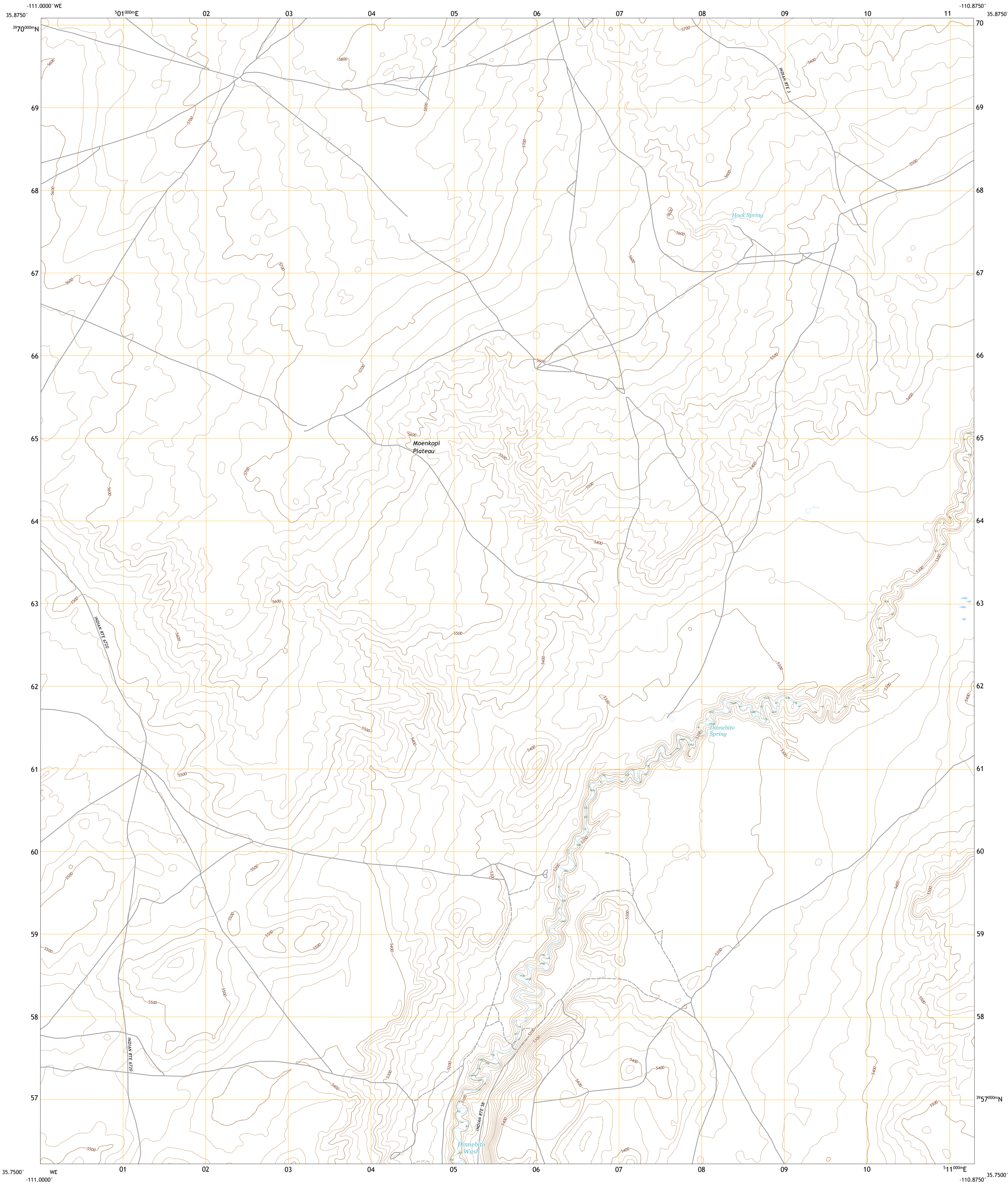




U.S. DEPARTMENT OF THE INTERIOR
U.S. GEOLOGICAL SURVEY



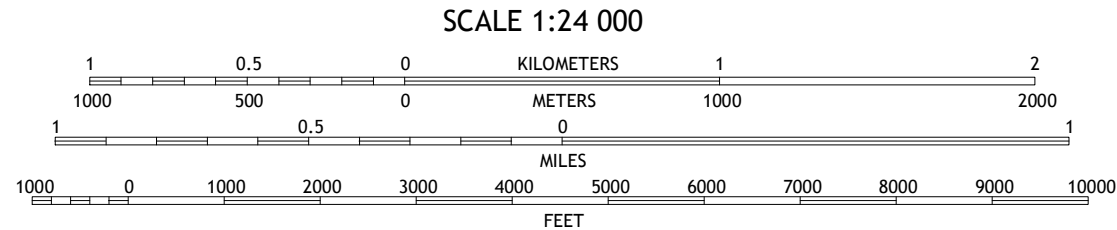
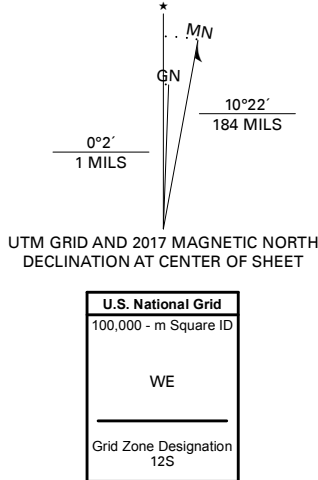
DINNEBITO SPRING QUADRANGLE
ARIZONA - COCONINO COUNTY
7.5-MINUTE SERIES



Produced by the United States Geological Survey

North American Datum of 1983 (NAD83)
World Geodetic System of 1984 (WGS84) Projection and
1 000-meter grid/Universal Transverse Mercator, Zone 12S
This map is not a legal document. Boundaries may be
generalized for this map scale. Private lands within government
reservations may not be shown. Obtain permission before
entering private lands.

Imagery.....NAIP, June 2015 - August 2015
Roads.....U.S. Census Bureau, 2018
Names.....GNIS, 1980 - 2011
Hydrography.....National Hydrography Dataset, 2004 - 2011
Contours.....National Elevation Dataset, 1999
Boundaries.....Multiple sources: see metadata file 2016 - 2017
Public Land Survey System.....BLM, 2017
Wetlands.....FWS National Wetlands Inventory Not Available



CONTOUR INTERVAL 20 FEET
NORTH AMERICAN VERTICAL DATUM OF 1988
This map was produced to conform with the
National Geospatial Program US Topo Product Standard, 2011.
A metadata file associated with this product is draft version 0.6.18



1	2	3
4	5	6
7	8	9

1 Appaloosa Ridge
2 Coal Mine Mesa
3 Howell Mesa
4 Gold Spring
5 Padilla Mesa
6 Rock Head
7 Sand Springs
8 Garces Mesas NE

ROAD CLASSIFICATION
Expressway
Secondary Hwy
Ramp
Interstate Route
Local Connector
Local Road
4WD
US Route
State Route

DINNEBITO SPRING, AZ

2018

