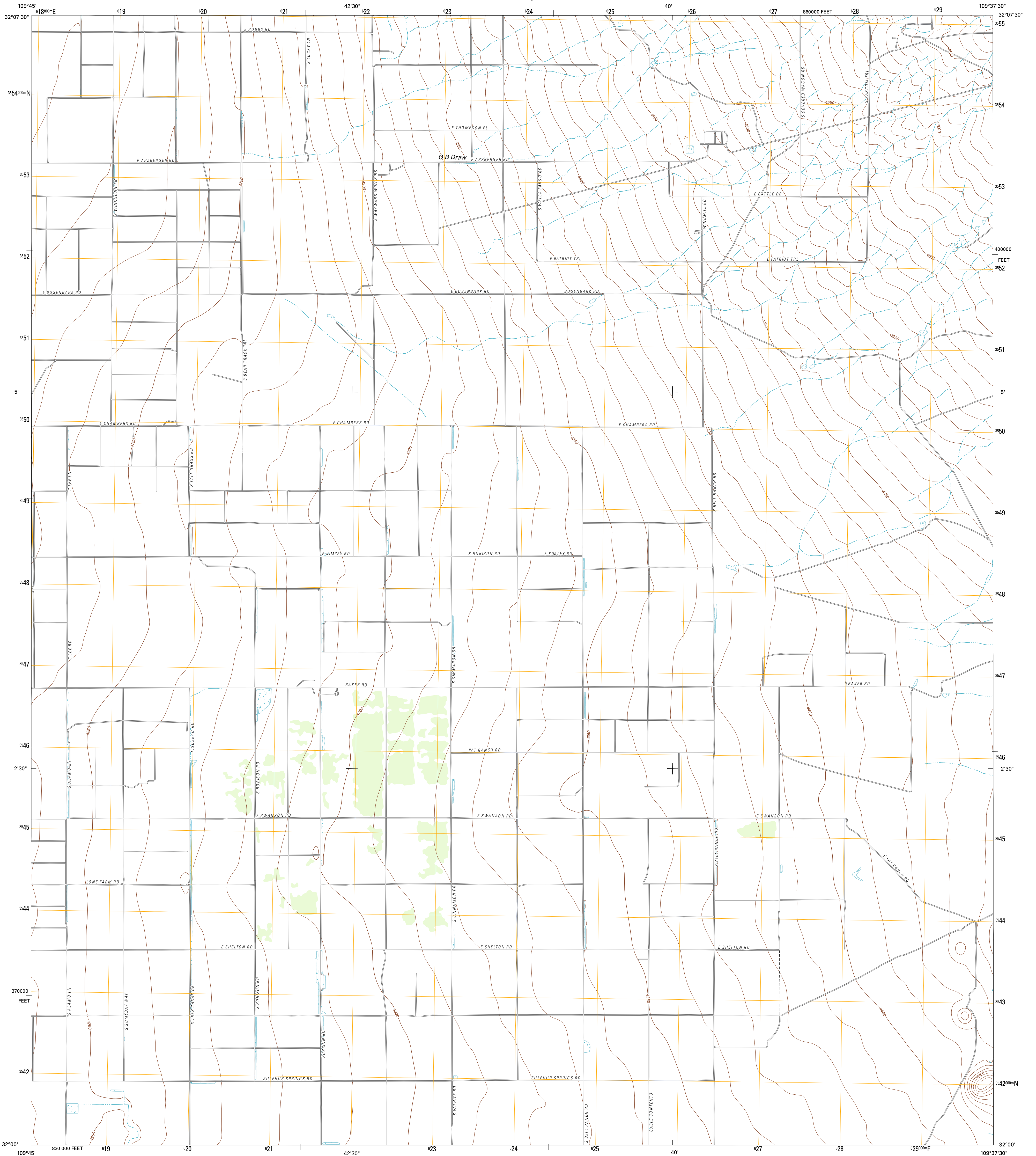




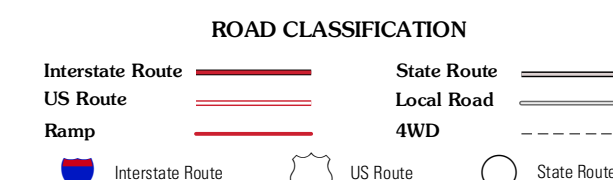
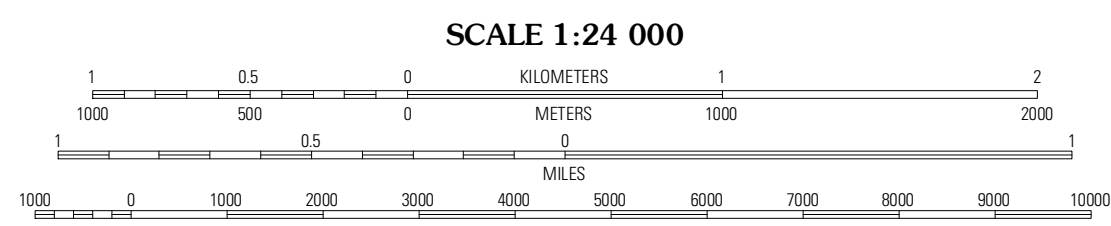
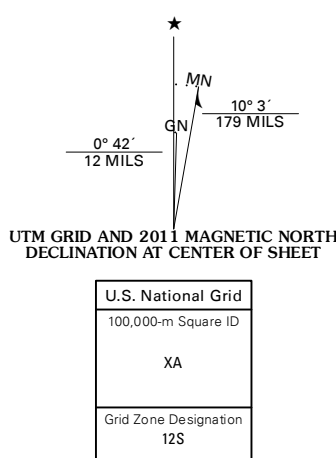
U.S. DEPARTMENT OF THE INTERIOR
U. S. GEOLOGICAL SURVEY



DOS CABEZAS SW QUADRANGLE
ARIZONA-COCHISE CO.
7.5-MINUTE SERIES



Produced by the United States Geological Survey
North American Datum of 1983 (NAD83)
World Geodetic System of 1984 (WGS84) Projection and
1 000-meter grid; Universal Transverse Mercator, Zone 12S
10 000-foot ticks; Arizona Coordinate System of 1983 (east zone)



QUADRANGLE LOCATION

Wilcox South	Simmons Peak	Dos Cabezas
Sulphur Spring	Dos Cabezas SW	Pat Hills North
Pearce	Sulphur Hills	Pat Hills South

ADJOINING 7.5 QUADRANGLES

Imagery: N/AIP, June 2010
Roads: ©2006-2011 TomTom
Names: GNIS, 2011
Hydrography: National Hydrography Dataset, 2010
Contours: National Elevation Dataset, 2002
Boundaries: Census, IBWC, IBC, USGS, 1972 - 2010

CONTOUR INTERVAL 10 FEET
NORTH AMERICAN VERTICAL DATUM OF 1988
This map was produced to conform with the
National Geospatial Program US Topo Product Standard, 2011.
A metadata file associated with this product is draft version 0.6.1

DOS CABEZAS SW, AZ
2011