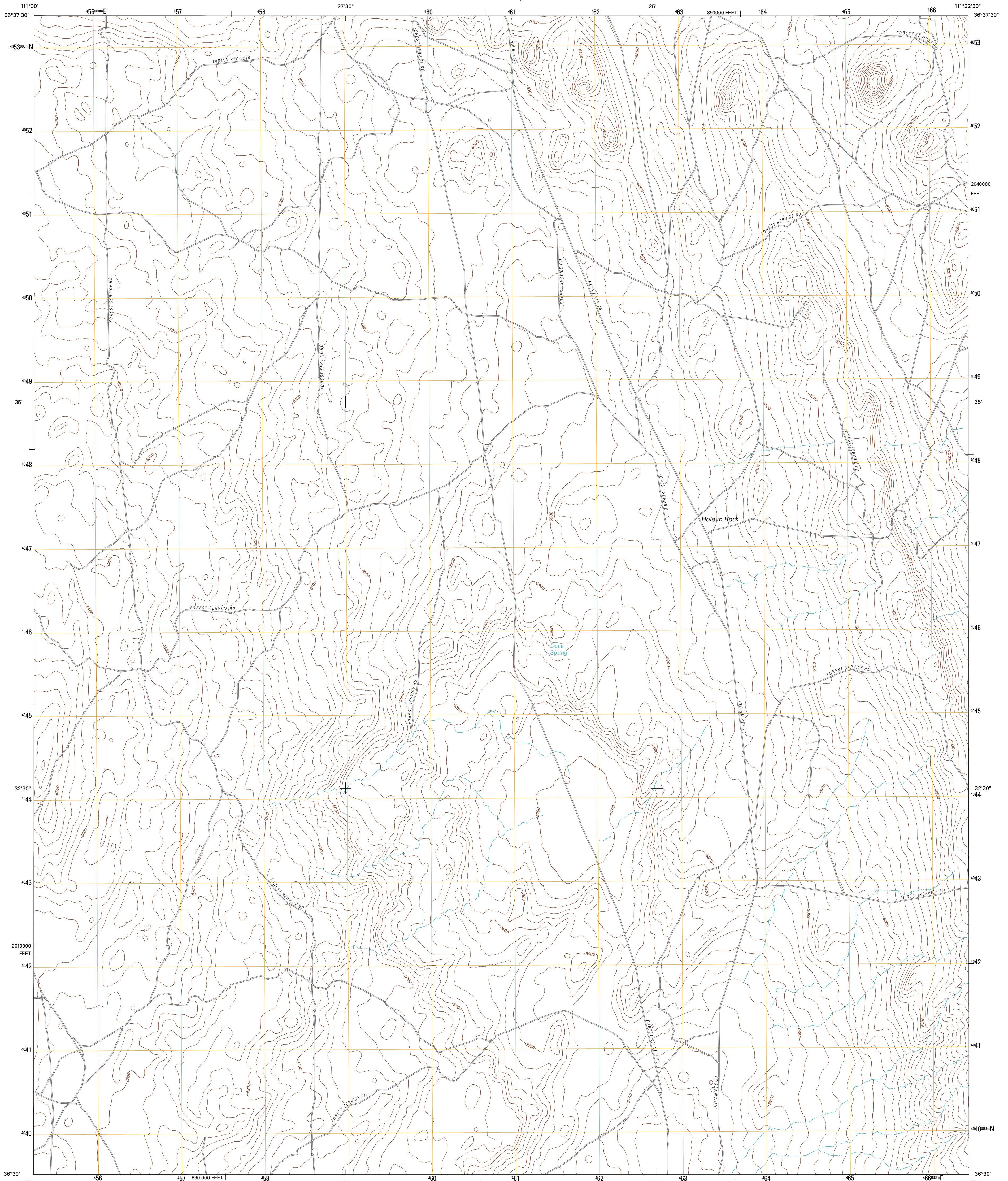




U.S. DEPARTMENT OF THE INTERIOR
U. S. GEOLOGICAL SURVEY

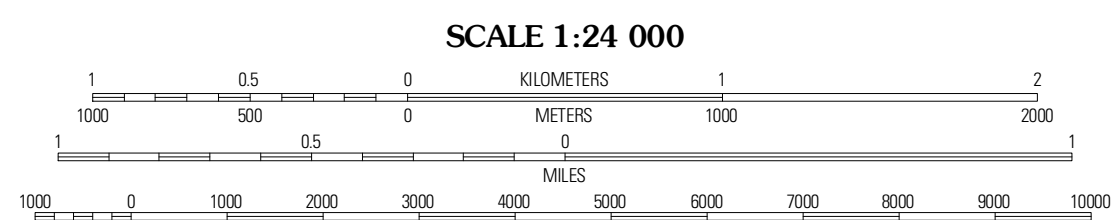
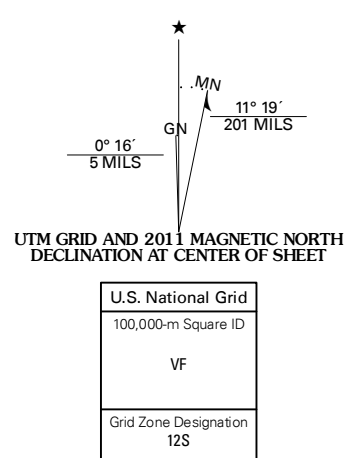


DOVE SPRING QUADRANGLE
ARIZONA-COCONINO CO.
7.5-MINUTE SERIES



Produced by the United States Geological Survey
North American Datum of 1983 (NAD83)
World Geodetic System of 1984 (WGS84). Projection and
10 000-foot ticks: Arizona Transverse Mercator, Zone 12S
(central zone)

Imagery: NAIIP, June 2010
Roads: ©2006-2011 TomTom
Names: GNS, 2011
Hydrography: National Hydrography Dataset, 2007
Contours: National Elevation Dataset, 1999
Boundaries: Census, IBWC, IBC, USGS, 1972-2010



CONTOUR INTERVAL 20 FEET
NORTH AMERICAN VERTICAL DATUM OF 1988

This map was produced to conform with the National Geospatial Program US Topo Product Standard, 2011. A metadata file associated with this product is draft version 0.6.1



QUADRANGLE LOCATION

Explosive Rock	Dead Manley Ridge	Mary Gassins Hill
Cedar Tree Hills	Dove Spring	Dove Spring SE
Cedar Ridge	Toh Bib Nostery	Sitting Coyote Hill

ROAD CLASSIFICATION

Interstate Route	State Route
US Route	Local Road
Ramp	4WD

DOVE SPRING, AZ
2011

ADJOINING 7.5 QUADRANGLES