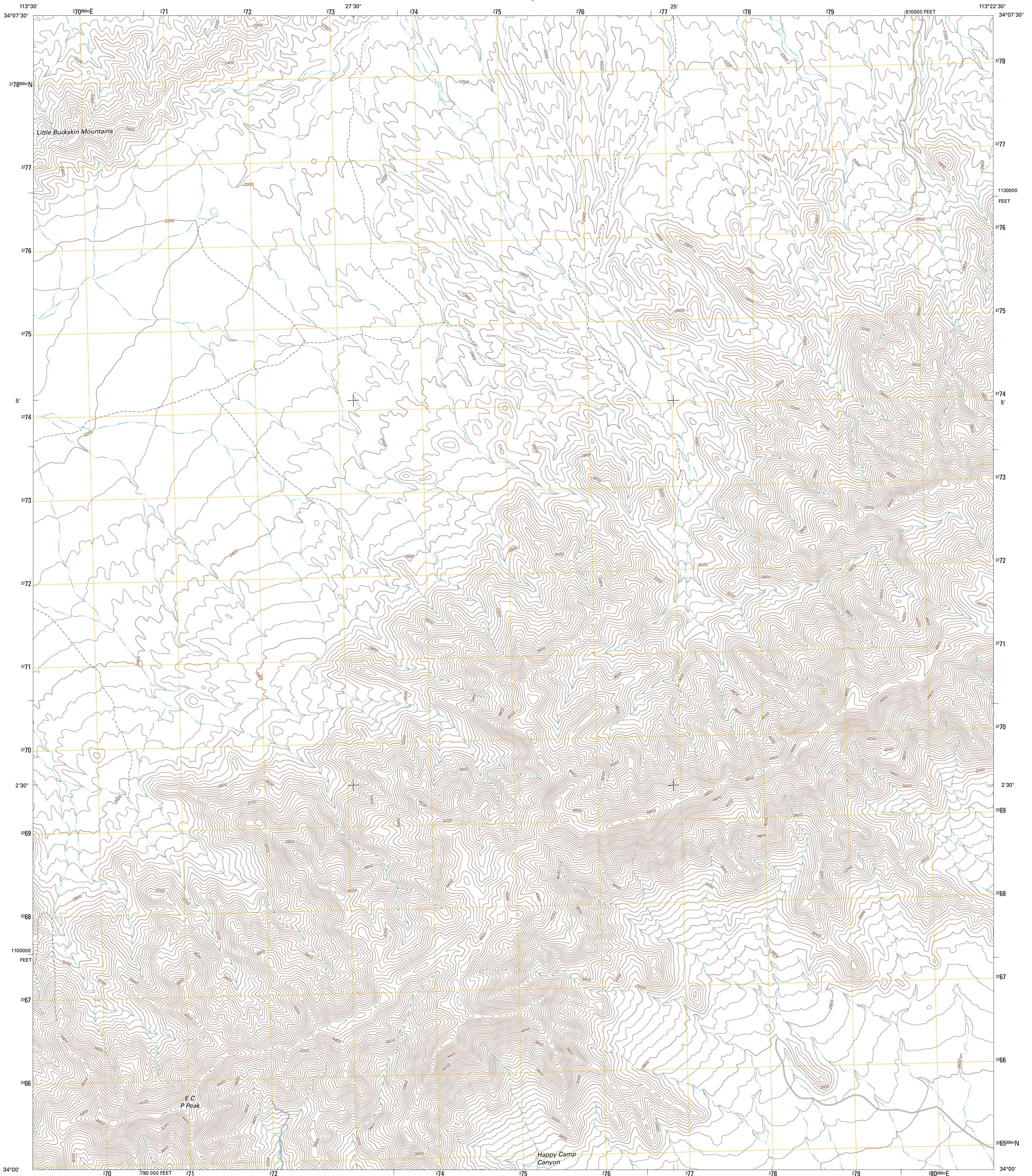




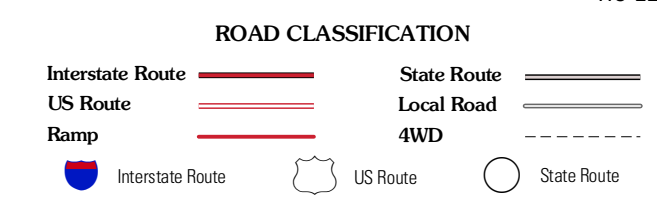
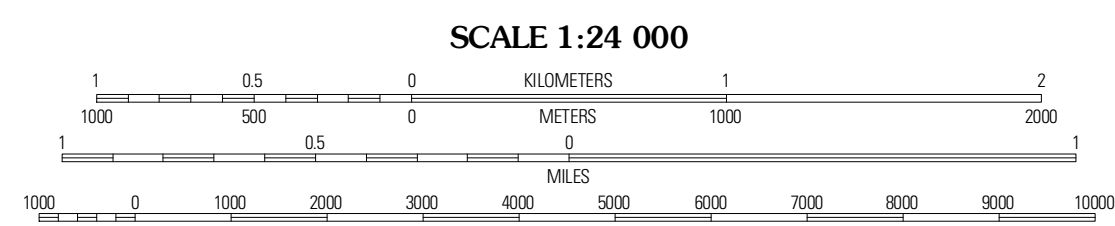
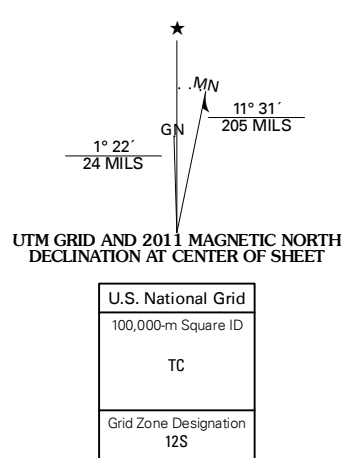
U.S. DEPARTMENT OF THE INTERIOR
U. S. GEOLOGICAL SURVEY



E C P PEAK QUADRANGLE
ARIZONA-LA PAZ CO.
7.5-MINUTE SERIES



Produced by the United States Geological Survey
North American Datum of 1983 (NAD83)
World Geodetic System of 1984 (WGS84). Projection and
1 000-meter grid: Universal Transverse Mercator, Zone 12S
10 000-foot ticks: Arizona Coordinate System of 1983 (west
zone)



QUADRANGLE LOCATION

| | | |
|-----------------|---------------|---------------|
| Alamo Dam | Smith Peak NW | Smith Peak NE |
| Alamo Dam SE | E C P Peak | Smith Peak |
| Cunningham Pass | Webber Canyon | Gladden |

ADJOINING 7.5' QUADRANGLES

E C P PEAK, AZ
2011

This map was produced to conform with the
National Geospatial Program US Topo Product Standard, 2011.
A metadata file associated with this product is draft version 0.6.1

Imagery.....N.A.P., June 2010
Roads.....©2006-2011 TomTom
Names.....GNIS, 2011
Hydrography.....National Hydrography Dataset, 2007
Contours.....National Elevation Dataset, 2002
Boundaries.....Census, BWC, BIC, USGS, 1972 - 2010