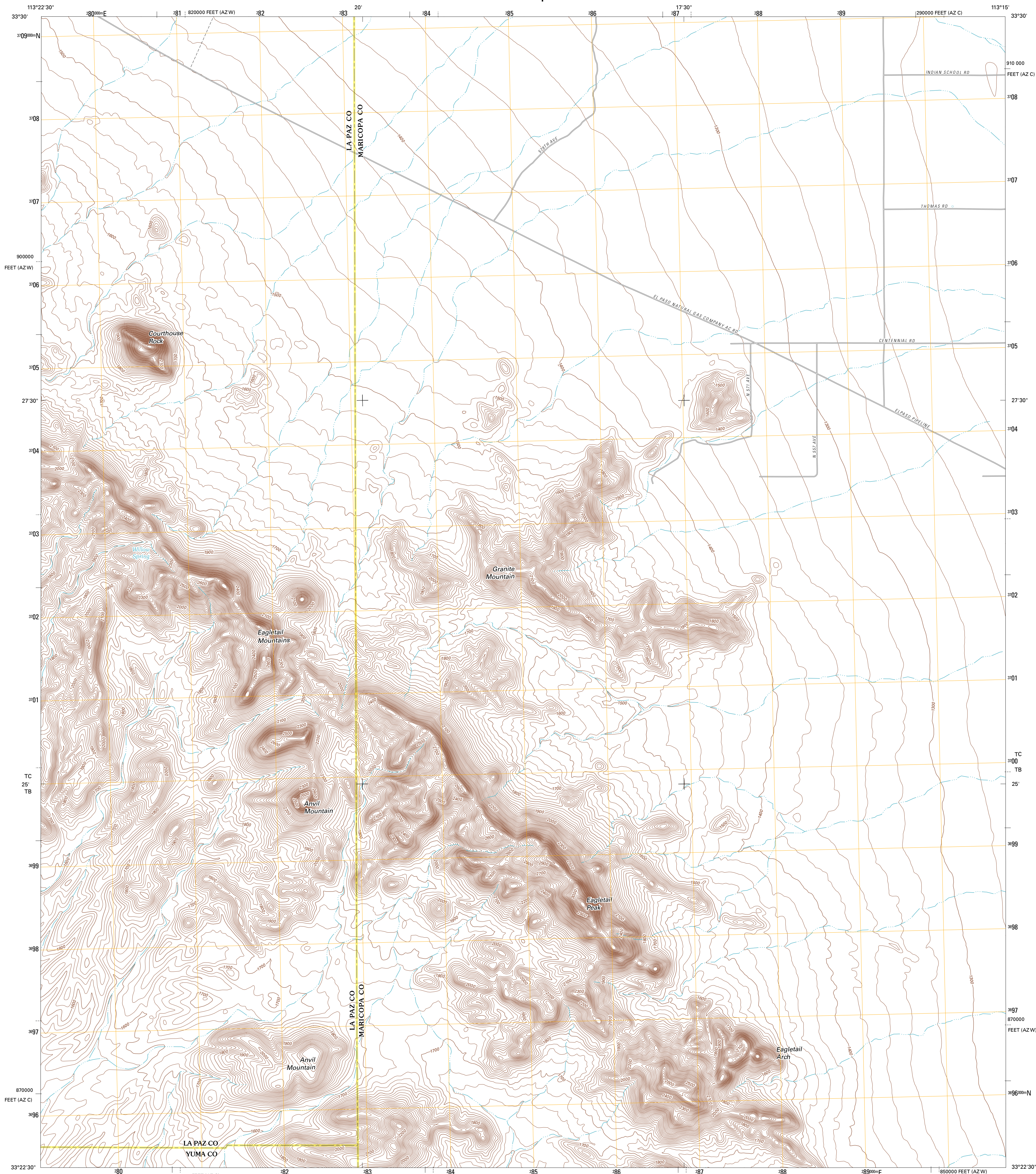




U.S. DEPARTMENT OF THE INTERIOR
U. S. GEOLOGICAL SURVEY

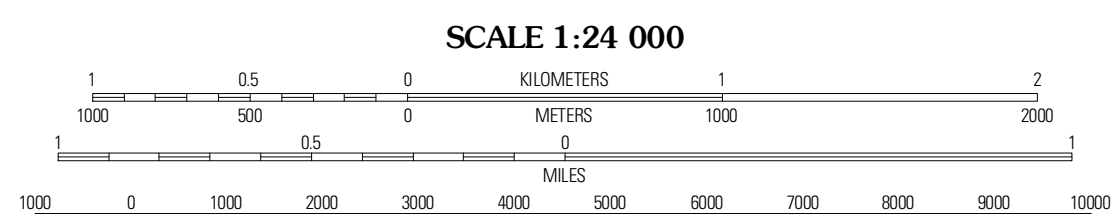
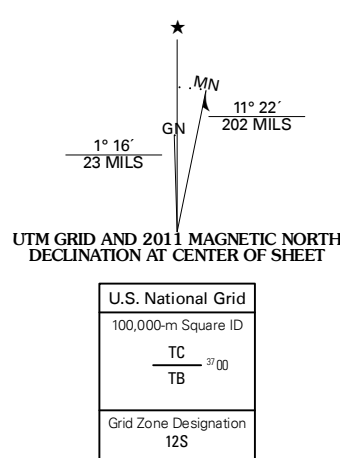


EAGLETAIL MOUNTAINS EAST QUADRANGLE
ARIZONA
7.5-MINUTE SERIES



Produced by the United States Geological Survey
North American Datum of 1983 (NAD83)
World Geodetic System of 1984 (WGS84) Projection and
1 000-meter grid: Universal Transverse Mercator, Zone 12S
10 000-foot ticks: Arizona Coordinate System of 1983
(central and west zones)

Imagery: N/AIP, June 2010
Roads: 02/2006-2011 TomTom
Names: GNIS, 2011
Hydrography: National Hydrography Dataset, 2007
Contours: National Elevation Dataset, 2003
Boundaries: Census, IBVC, IBC, USGS, 1972 - 2010



CONTOUR INTERVAL 20 FEET
NORTH AMERICAN VERTICAL DATUM OF 1988

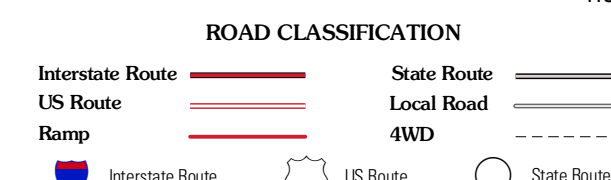
This map was produced to conform with the National Geospatial Program US Topo Product Standard, 2011. A metadata file associated with this product is draft version 0.6.1



QUADRANGLE LOCATION

Lone Mountain	Courthouse Well	Big Horn Peak
Eagletail Mountains West	Eagletail Mountains East	Cortez Peak NW
Northbush Butte	Columbus Peak	Cortez Peak

ADJOINING 7.5 QUADRANGLES



EAGLETAIL MOUNTAINS EAST, AZ
2011