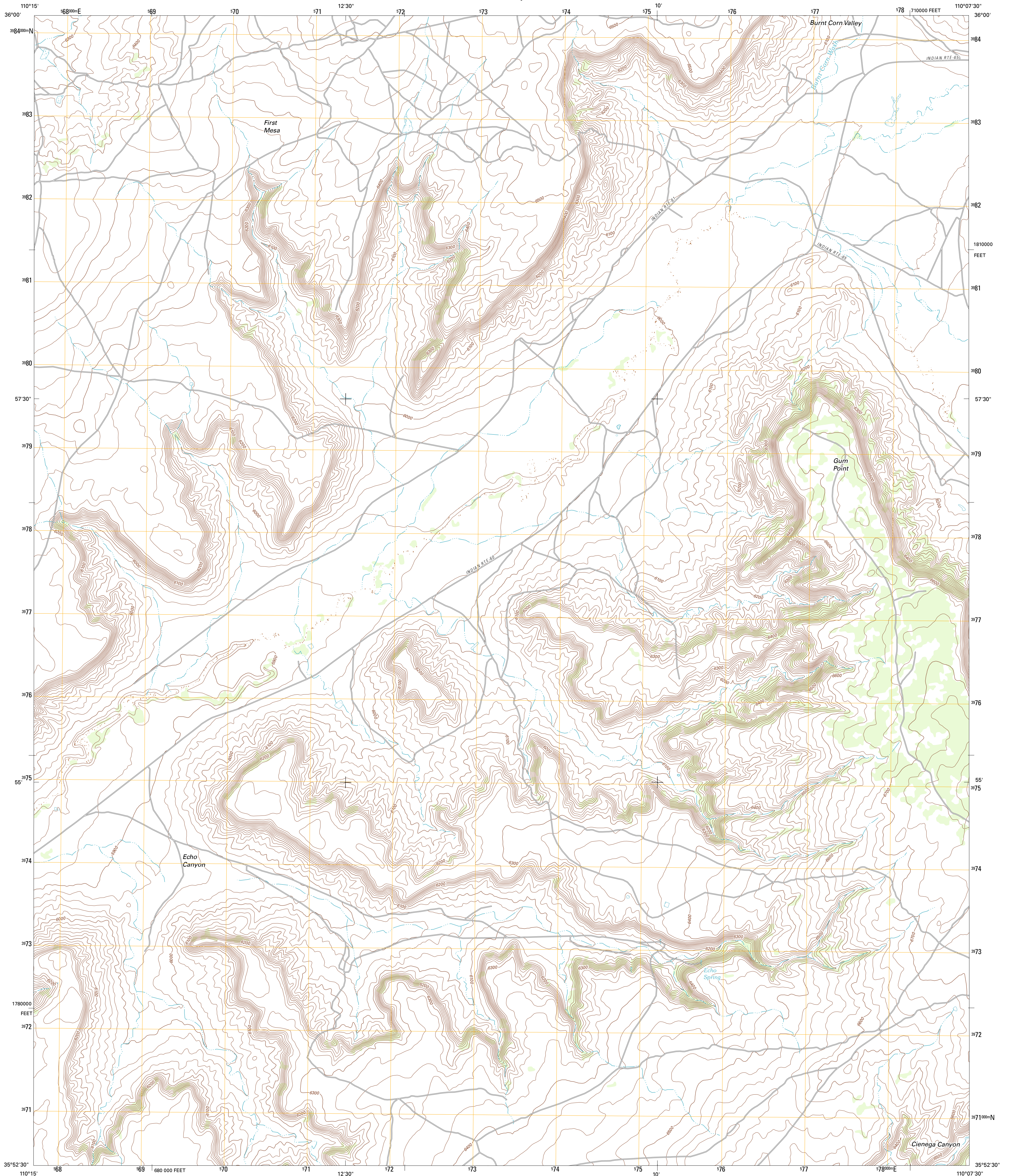




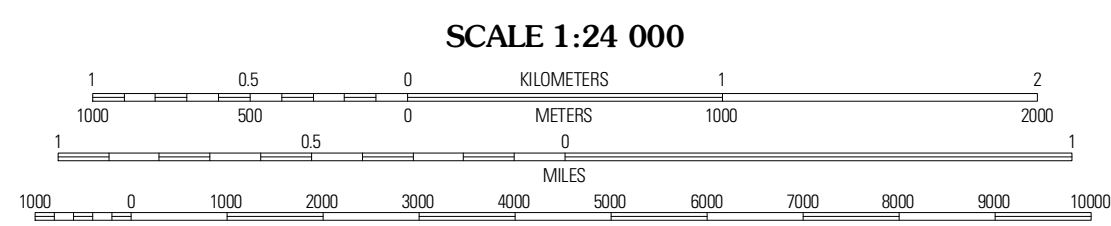
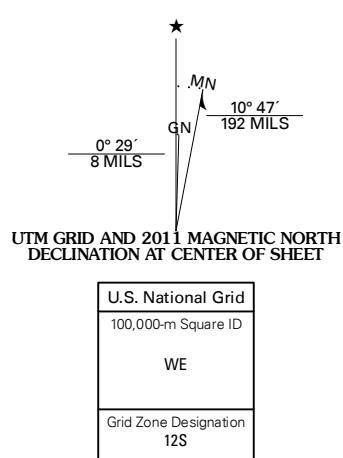
U.S. DEPARTMENT OF THE INTERIOR  
U. S. GEOLOGICAL SURVEY



ECHO CANYON QUADRANGLE  
ARIZONA-NAVAJO CO.  
7.5-MINUTE SERIES



Produced by the United States Geological Survey  
North American Datum of 1983 (NAD83)  
World Geodetic System of 1984 (WGS84). Projection and  
1 000-meter grid: Universal Transverse Mercator, Zone 12S  
10 000-foot ticks: Arizona Coordinate System of 1983 (east  
zone)



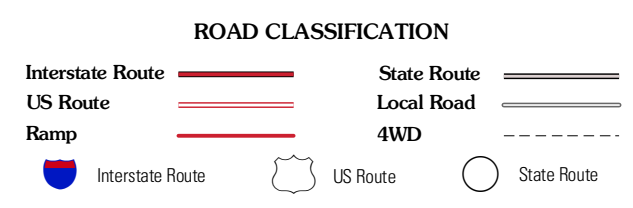
CONTOUR INTERVAL 20 FEET  
NORTH AMERICAN VERTICAL DATUM OF 1988

This map was produced to conform with the  
National Geospatial Program US Topo Product Standard, 2011.  
A metadata file associated with this product is draft version 0.6.1



QUADRANGLE LOCATION

Little Black Spot Mountain	Phon	Whippoorwill Spring
Wipo Village	Echo Canyon	Low Mountain
Sun Altar	Keams Canyon	Lamb Well



ECHO CANYON, AZ  
2011

ADJOINING 7.5' QUADRANGLES