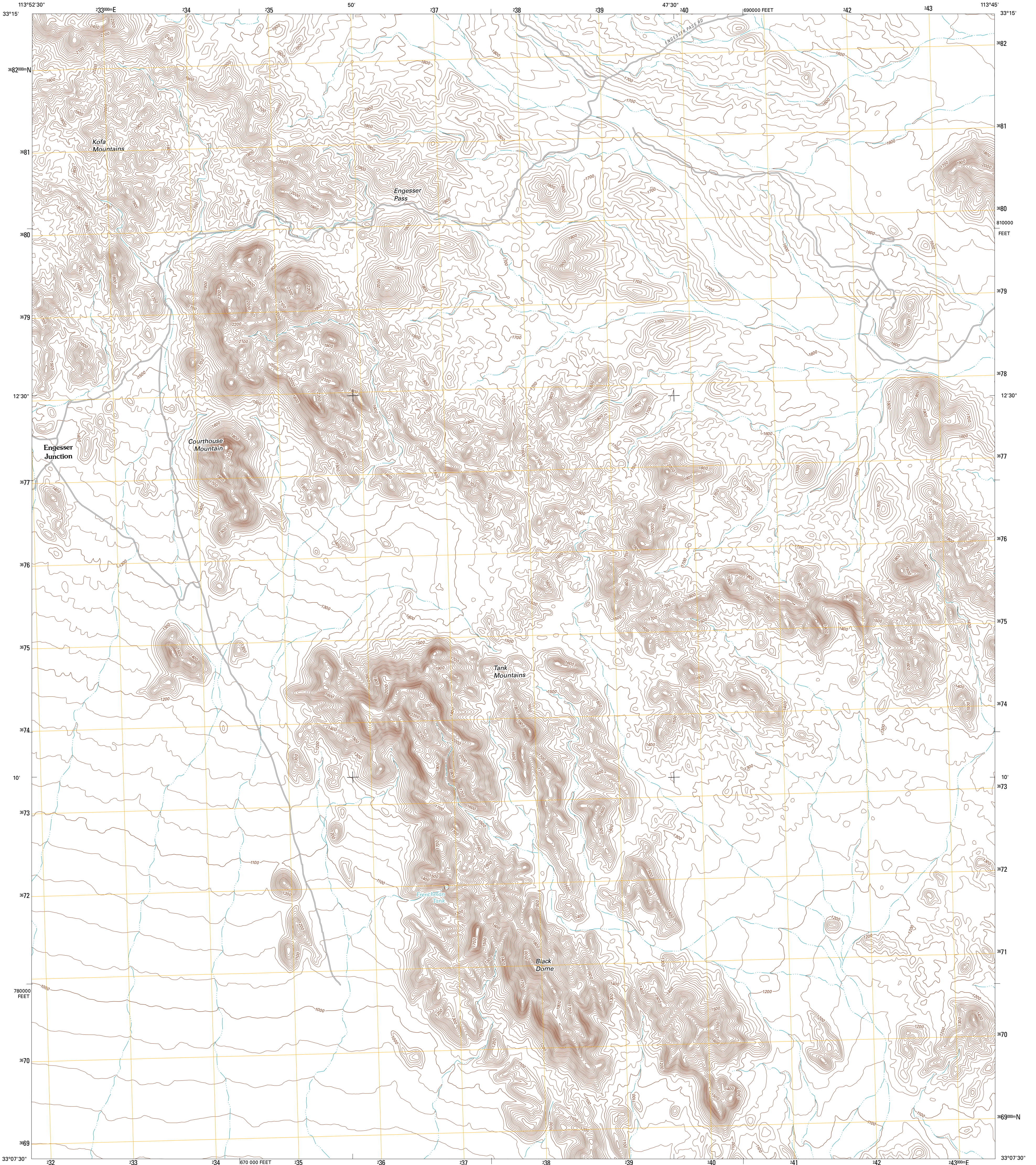




U.S. DEPARTMENT OF THE INTERIOR
U. S. GEOLOGICAL SURVEY

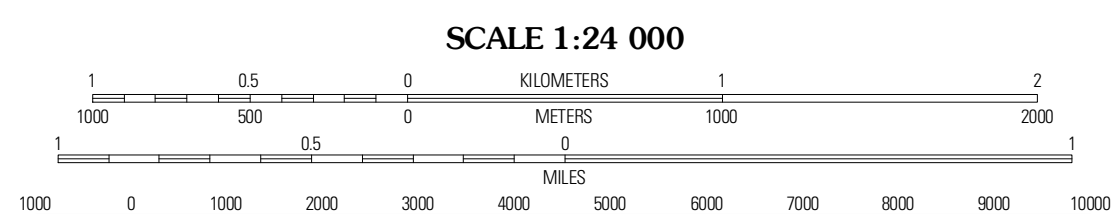
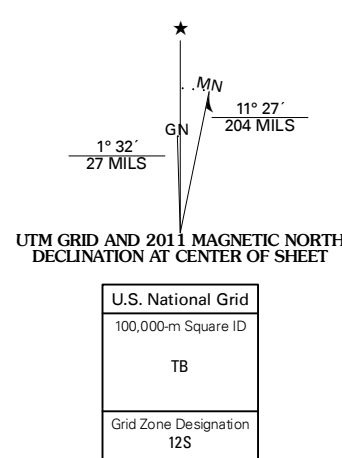


ENGESSER PASS QUADRANGLE
ARIZONA-YUMA CO.
7.5-MINUTE SERIES



Produced by the United States Geological Survey
North American Datum of 1983 (NAD83)
World Geodetic System of 1984 (WGS84). Projection and
1 000-meter grid: Universal Transverse Mercator, Zone 12S
10 000-foot ticks: Arizona Coordinate System of 1983 (west
zone)

Imagery:.....NAIP, July 2010
Roads:.....2006-2011 TomTom
Names:.....GNIS, 2011
Hydrography:.....National Hydrography Dataset, 2007
Contours:.....National Elevation Dataset, 2003
Boundaries:.....Census, IBWC, IBC, USCS, 1972 - 2010



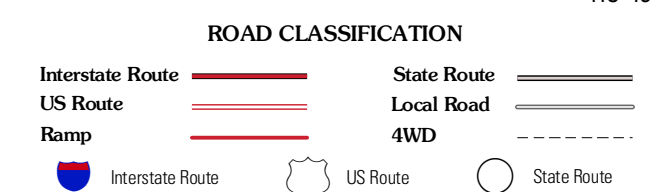
CONTOUR INTERVAL 20 FEET
NORTH AMERICAN VERTICAL DATUM OF 1988

This map was produced to conform with the
National Geospatial Program US Topo Product Standard, 2011.
A metadata file associated with this product is draft version 0.6.1



QUADRANGLE LOCATION

Kofa Butte	Hoodoo Well	Cementosa Wash
Charlie Dead Tank	Engesser Pass	Palomas Mountains NW
Engesser Pass SW	Neverweat Ridge	Palomas Mountains SW



ENGESSER PASS, AZ
2011

ADJOINING 7.5' QUADRANGLES