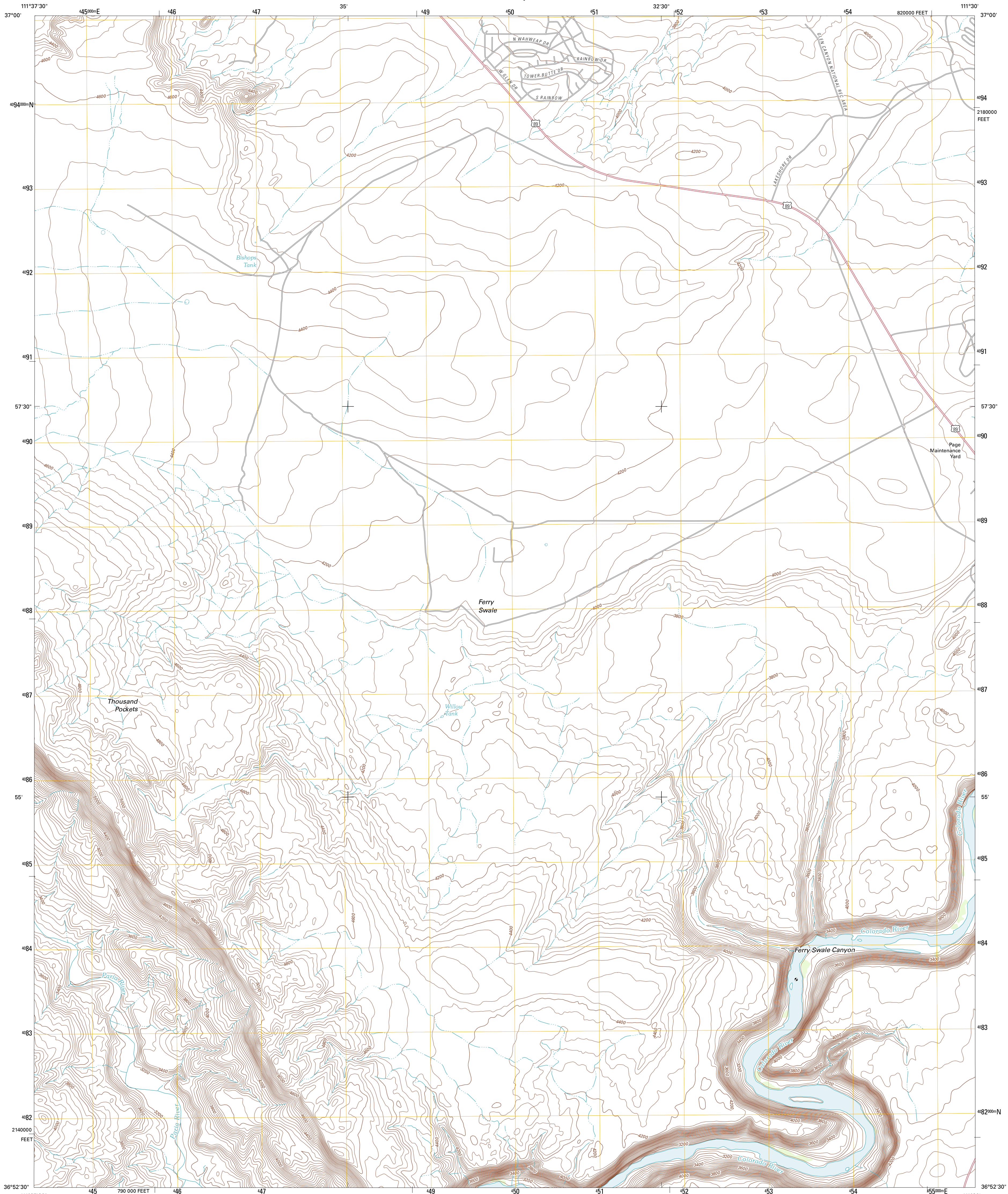




U.S. DEPARTMENT OF THE INTERIOR
U. S. GEOLOGICAL SURVEY



FERRY SWALE QUADRANGLE
ARIZONA-COCONINO CO.
7.5-MINUTE SERIES



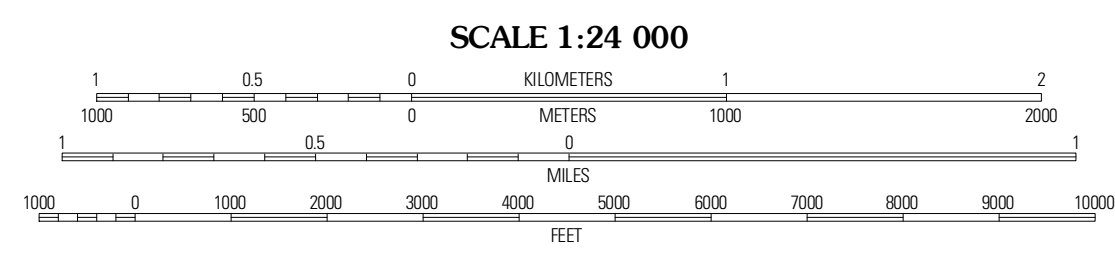
Produced by the United States Geological Survey
North American Datum of 1983 (NAD83)
World Geodetic System of 1984 (WGS84). Projection and
1 000-meter grid: Universal Transverse Mercator, Zone 12S
10 000-foot ticks: Arizona Coordinate System of 1983
(central zone)

Imagery.....NAP, June 2010
Roads.....©2006-2011 TomTom
Names.....GNIS, 2011
Hydrography.....National Hydrography Dataset, 2007
Contours.....National Elevation Dataset, 1999
Boundaries.....Census, BWC, BIC, USGS, 1972 - 2010

UTM GRID AND 2011 MAGNETIC NORTH DECLINATION AT CENTER OF SHEET

U.S. National Grid
100,000m Square ID
VF
Grid Zone Designation
12S

0° 20' 6 MILLS
11° 26' 203 MILLS



CONTOUR INTERVAL 40 FEET
NORTH AMERICAN VERTICAL DATUM OF 1988

This map was produced to conform with the
National Geospatial Program US Topo Product Standard, 2011.
A metadata file associated with this product is draft version 0.6.1



QUADRANGLE LOCATION

Big Water	Lone Rock	Warm Creek Bay
Water Pockets	Ferry Swale	Page
Nauvajo Bridge	Lees Ferry	White Dome

ROAD CLASSIFICATION

Interstate Route (thick red line)
US Route (red line)
Ramp (red line with blue triangle)

State Route (grey line)
Local Road (thin grey line)
4WD (dashed grey line)

FERRY SWALE, AZ
2011

ADJOINING 7.5' QUADRANGLES