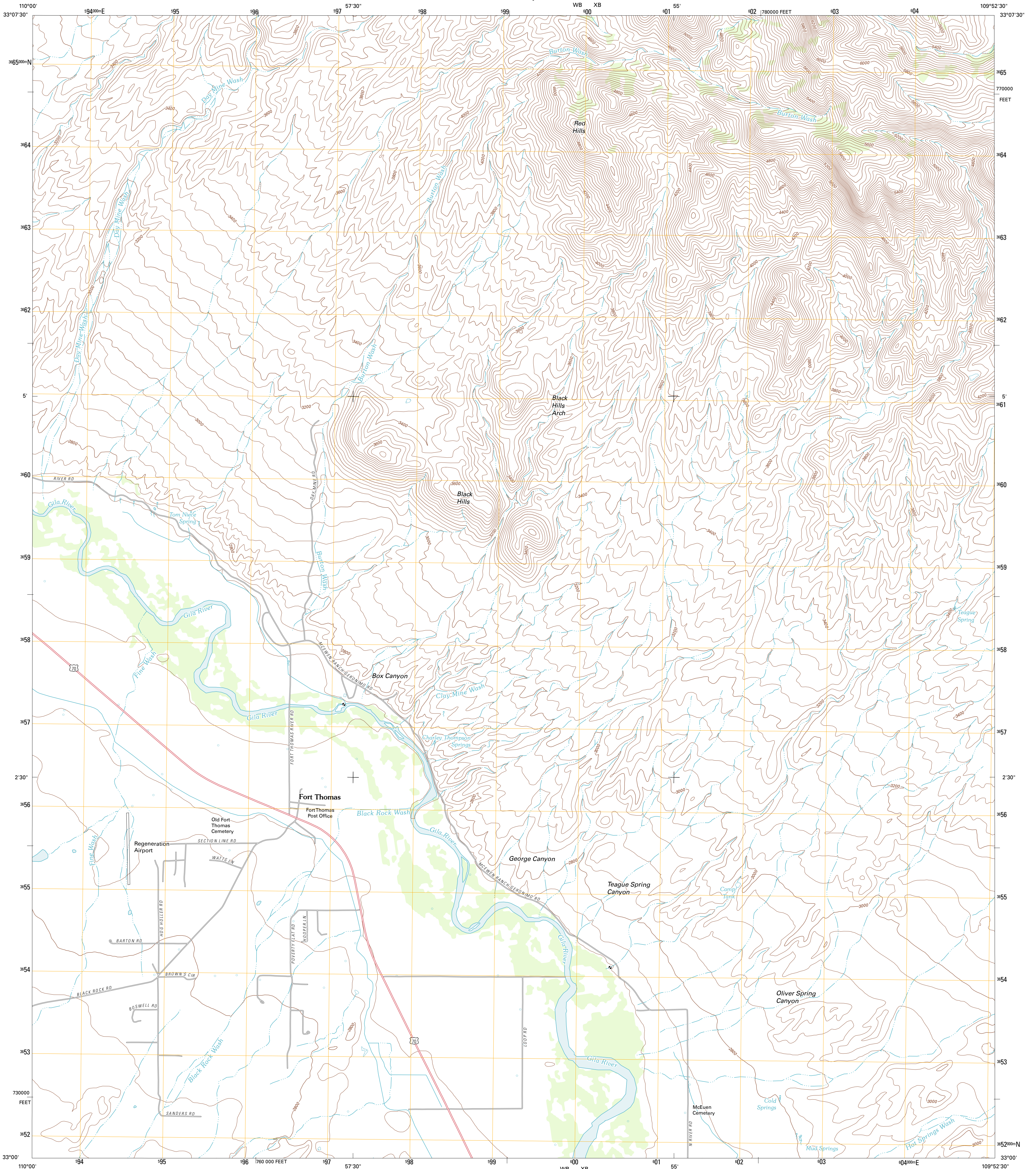




U.S. DEPARTMENT OF THE INTERIOR  
U. S. GEOLOGICAL SURVEY

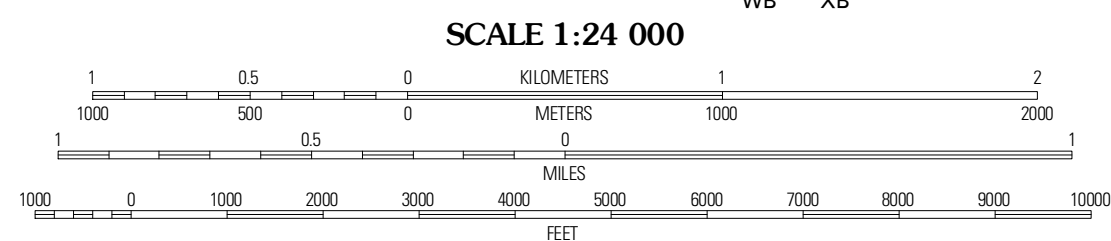
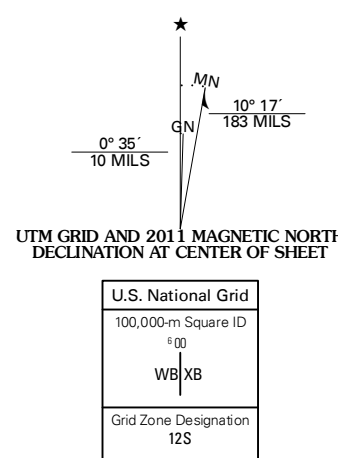


FORT THOMAS QUADRANGLE  
ARIZONA-GRAHAM CO.  
7.5-MINUTE SERIES



Produced by the United States Geological Survey  
North American Datum of 1983 (NAD83)  
World Geodetic System of 1984 (WGS84). Projection and  
1 000-meter grid: Universal Transverse Mercator, Zone 12S  
10 000-foot ticks: Arizona Coordinate System of 1983 (east  
zone)

Imagery: NADP, August 2010  
Roads: 2006-2011 TomTom  
Names: GNIS, 2011  
Hydrography: National Hydrography Dataset, 2007  
Contours: National Elevation Dataset, 2002  
Boundaries: Census, IBWC, IBC, USGS, 1972 - 2010

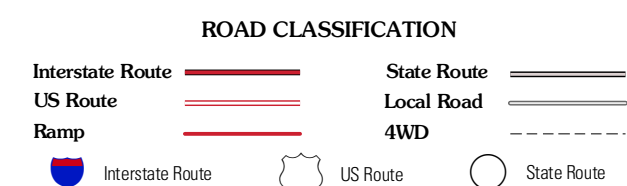


CONTOUR INTERVAL 40 FEET  
NORTH AMERICAN VERTICAL DATUM OF 1988  
This map was produced to conform with the  
National Geospatial Program US Topo Product Standard, 2011.  
A metadata file associated with this product is draft version 0.6.1



QUADRANGLE LOCATION

Byles	Gila Peak	Bonita Tank
Gerónimo	Fort Thomas	Markham Creek
Telegraph Wash	Eden	Pima



FORT THOMAS, AZ  
2011

ADJOINING 7.5' QUADRANGLES