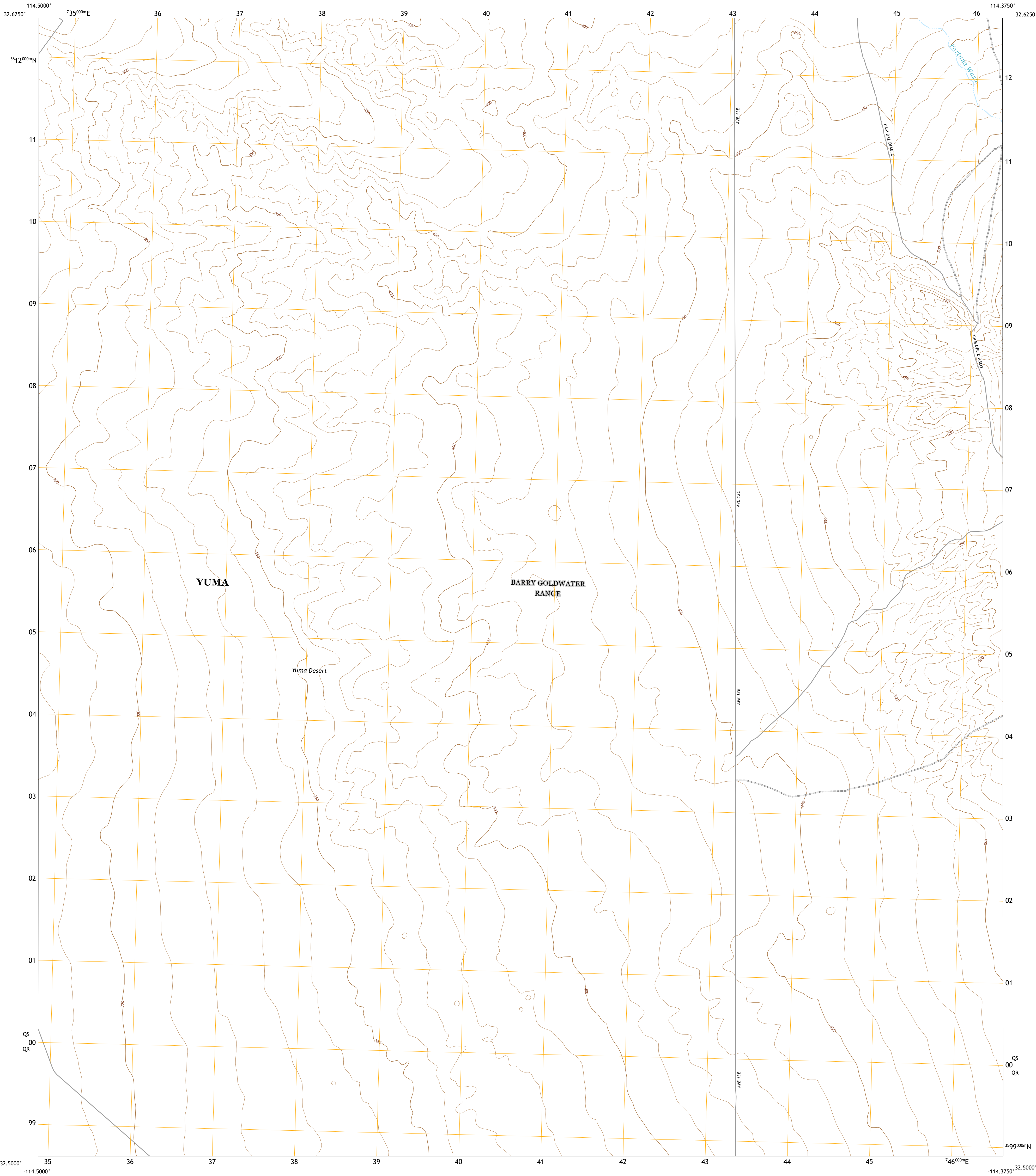




U.S. DEPARTMENT OF THE INTERIOR
U.S. GEOLOGICAL SURVEY

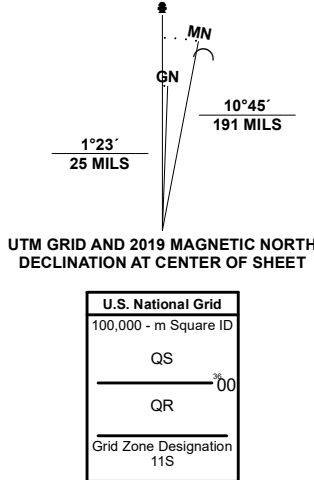


FORTUNA SW QUADRANGLE
ARIZONA - YUMA COUNTY
7.5-MINUTE SERIES



Produced by the United States Geological Survey

North American Datum of 1983 (NAD83)
World Geodetic System of 1984 (WGS84), Projection and
1 000-meter grid/Universal Transverse Mercator, Zone 11S
This map is not a legal document. Boundaries may be
generalized for this map scale. Private lands within government
reservations may not be shown. Obtain permission before
entering private lands.
Imagery.....NAIP, June 2019 - July 2019
Roads.....U.S. Census Bureau, 2016
Names.....GNIS, 1980-2021
Hydrography.....National Hydrography Dataset, 2006 - 2019
Contours.....National Elevation Dataset, 2002
Boundaries.....Multiple sources: see metadata file, 2019 - 2021
Public Land Survey System.....BLM, 2017
Wetlands.....FWS National Wetlands Inventory Not Available



CONTOUR INTERVAL 10 FEET
NORTH AMERICAN VERTICAL DATUM OF 1988
This map was produced to conform with the
National Geospatial Program US Topo Product Standard.



1	2	3
4	5	6
7	8	9

1 Yuma East
2 Fortuna
3 Ligurta
4 Yuma SE
5 Fortuna Mine
6 Southeast of Somerton
7 West of Vopoki Ridge
8 Vopoki Ridge

ROAD CLASSIFICATION
Expressway
Secondary Hwy
Ramp
Interstate Route
Local Connector
Local Road
4WD
US Route
State Route

FORTUNA SW, AZ
2021

