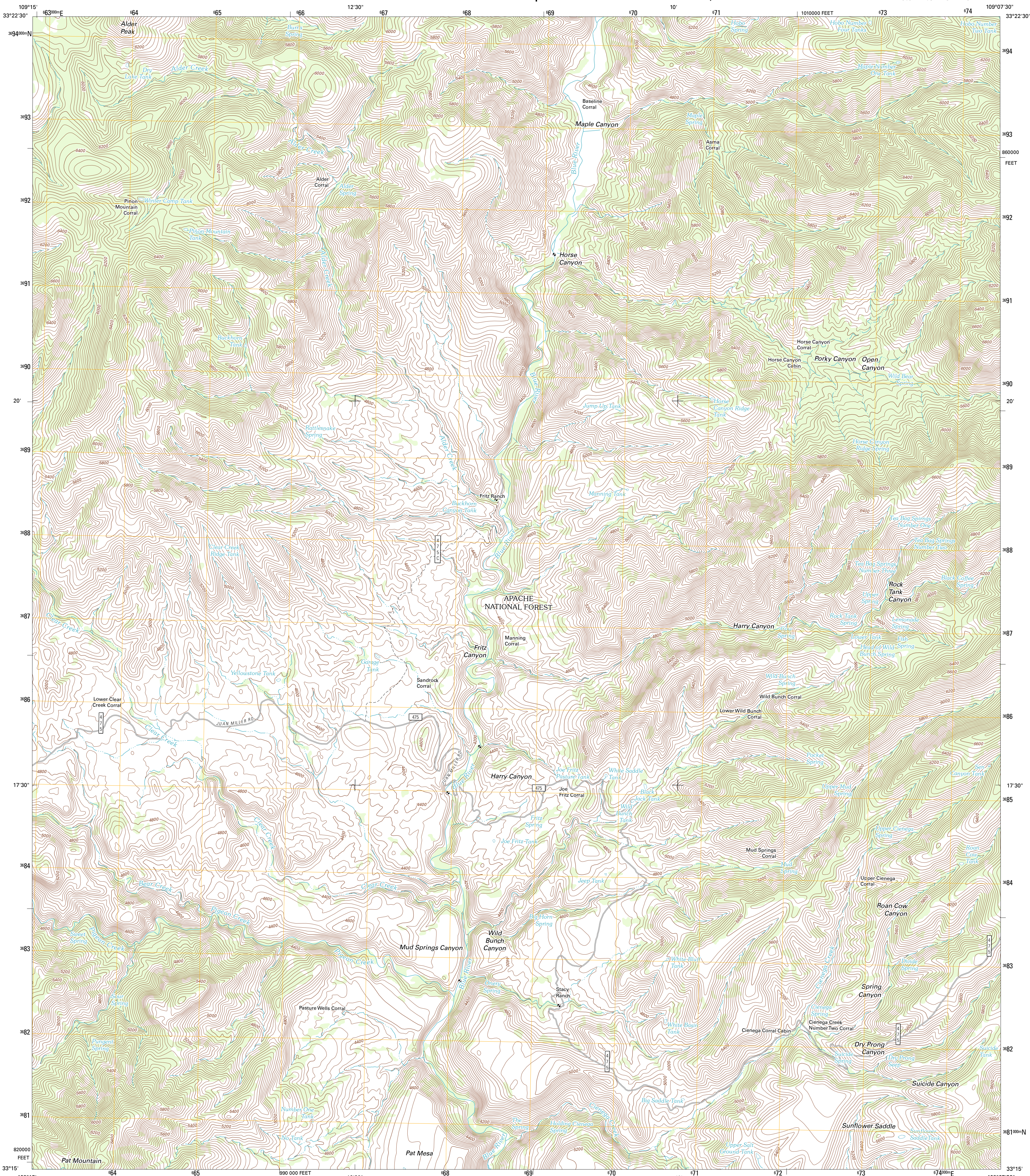




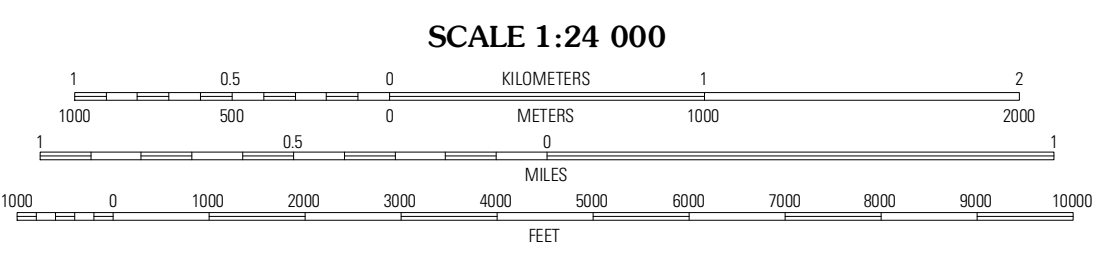
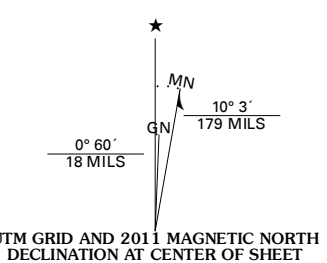
U.S. DEPARTMENT OF THE INTERIOR  
U. S. GEOLOGICAL SURVEY



FRITZ CANYON QUADRANGLE  
ARIZONA-GREENLEE CO.  
7.5-MINUTE SERIES



Produced by the United States Geological Survey  
North American Datum of 1983 (NAD83)  
World Geodetic System of 1984 (WGS84). Projection and  
10 000-foot ticks: Arizona Coordinate System of 1983 (east  
zone)



**ROAD CLASSIFICATION**

Interstate Route	State Route
US Route	Local Road
Ramp	4WD
FS Primary Route	FS Passenger Route
	FS High Clearance Route

Check with local Forest Service unit for current travel conditions and restrictions.

**QUADRANGLE LOCATION**

Rose Peak	Dutch Blue Creek	Alma Mesa
Pipestem Mountain	Fritz Canyon	Maple Peak
Mitchell Peak	Dis Creek	Harden Cienega

Imagery: NADP, August 2010  
Roads: 2006-2011 TomTom Roads within US Forest Service Lands, FSTopo Data with limited Forest Service updates, 2009  
Names: GNS, 2011 Hydrography: National Hydrography Dataset, 2010 Contours: National Elevation Dataset, 2002 Boundaries: Census, IBWC, IBC, USGS, 1972 - 2010

**UTM GRID AND 2011 MAGNETIC NORTH DECLINATION AT CENTER OF SHEET**

U.S. National Grid	100,000m Square ID
	XB
Grid Zone Designation	12S

CONTOUR INTERVAL 40 FEET  
NORTH AMERICAN VERTICAL DATUM OF 1988  
This map was produced to conform with the National Geospatial Program US Topo Product Standard, 2011. A metadata file associated with this product is draft version 0.6.1

FRITZ CANYON, AZ  
2011

ADJOINING 7.5' QUADRANGLES