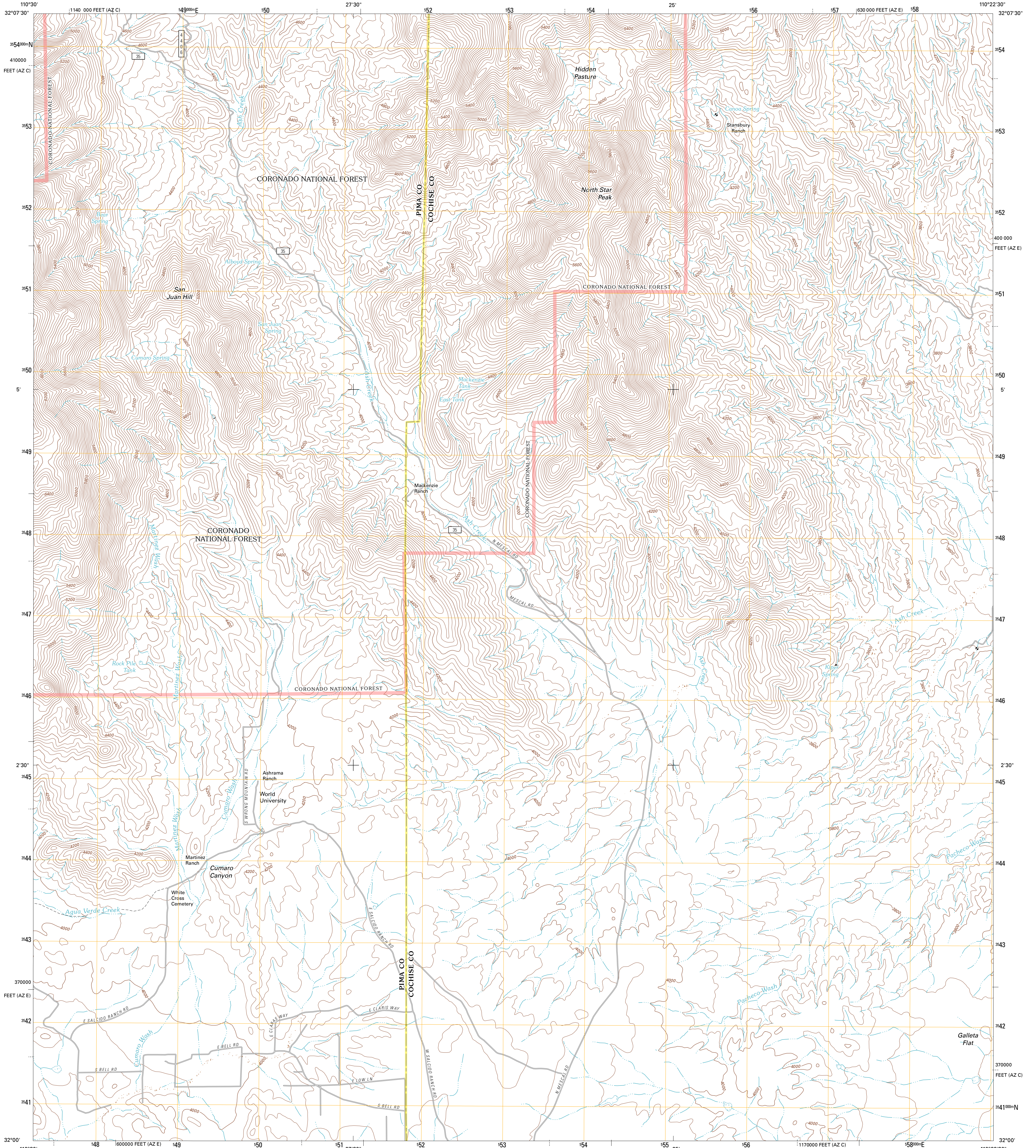




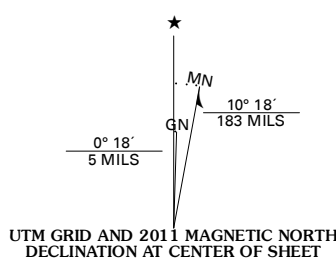
U.S. DEPARTMENT OF THE INTERIOR  
U. S. GEOLOGICAL SURVEY



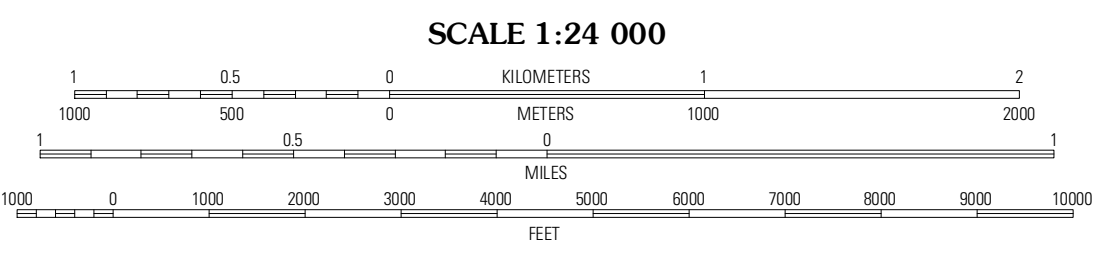
GALLETA FLAT WEST QUADRANGLE  
ARIZONA  
7.5-MINUTE SERIES



Produced by the United States Geological Survey  
North American Datum of 1983 (NAD83)  
World Geodetic System of 1984 (WGS84) Projection and  
1 000-foot grid; Universal Transverse Mercator, Zone 12S  
10 000-foot ticks; Arizona Coordinate System of 1983 (east  
and central zones)



U.S. National Grid	100,000-m Square ID
WA	
Grid Zone Designation	12S



CONTOUR INTERVAL 40 FEET  
NORTH AMERICAN VERTICAL DATUM OF 1988  
This map was produced to conform with the  
National Geospatial Program US Topo Product Standard, 2011.  
A metadata file associated with this product is draft version 0.6.1



QUADRANGLE LOCATION

Mica Mountain	Happy Valley	Wildhorse Mountain
Rincon Peak	Galleta Flat West	Galleta Flat East
The Narrows	Mescal	Benson

ADJOINING 7.5 QUADRANGLES

**ROAD CLASSIFICATION**

Interstate Route	State Route	Local Road
US Route	4WD	Dashed
Ramp	FS Primary Route	FS Passenger Route
	FS High Clearance Route	

Check with local Forest Service unit for current travel conditions and restrictions.

GALLETA FLAT WEST, AZ  
2011