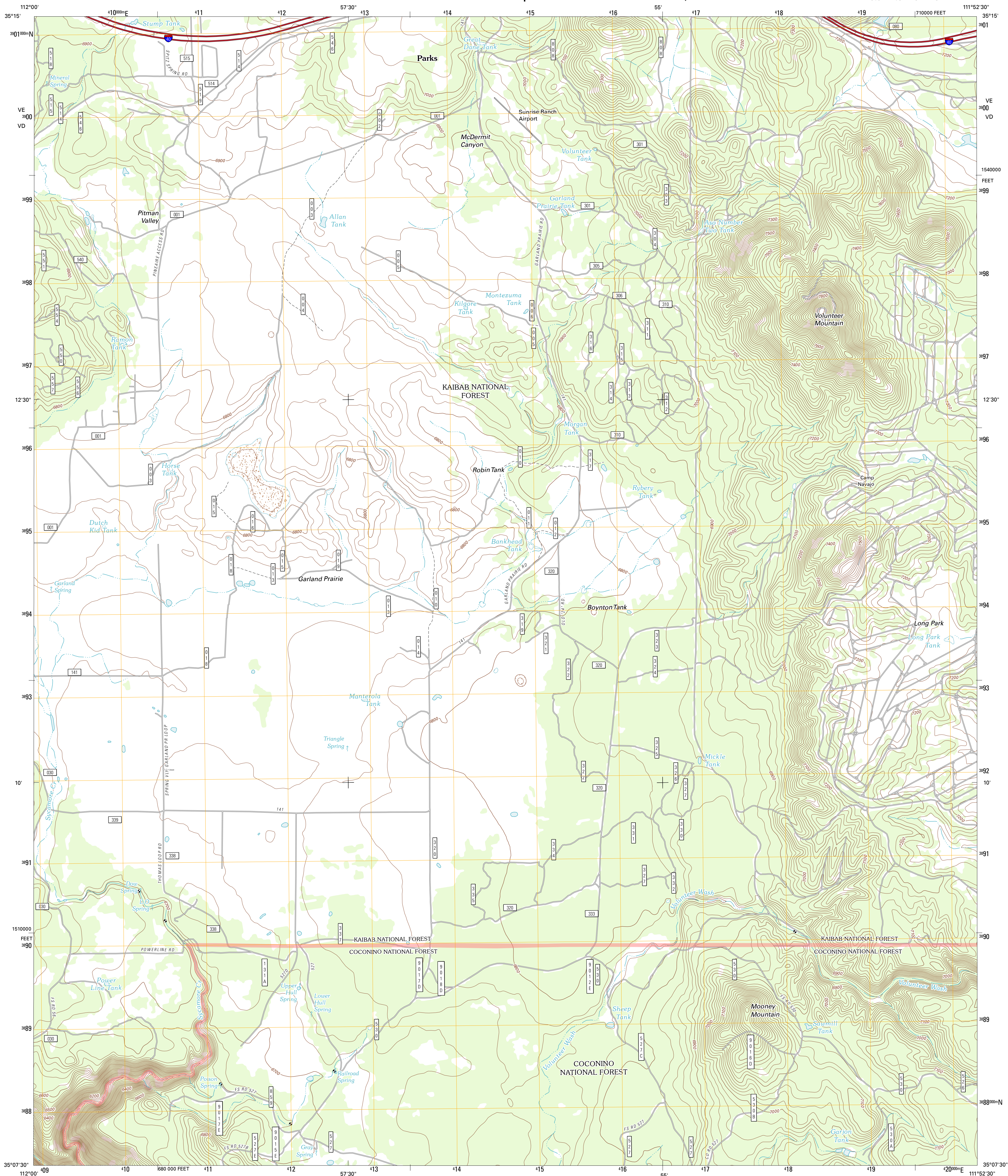




U.S. DEPARTMENT OF THE INTERIOR  
U. S. GEOLOGICAL SURVEY

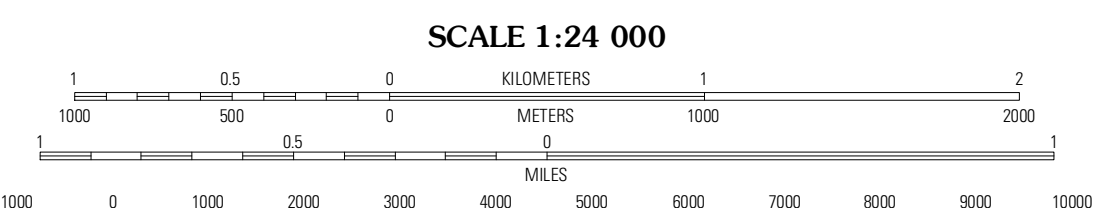
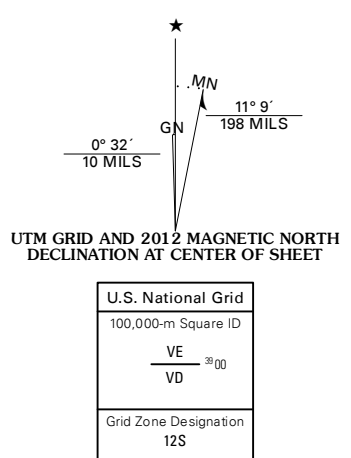


GARLAND PRAIRIE QUADRANGLE  
ARIZONA-COCONINO CO.  
7.5-MINUTE SERIES



Produced by the United States Geological Survey  
North American Datum of 1983 (NAD83)  
World Geodetic System of 1984 (WGS84). Projection and  
1 000-meter grid: Universal Transverse Mercator, Zone 12S  
10 000-foot ticks: Arizona Coordinate System of 1983  
(central zone)

Imagery: N.A.I.P., June 2010  
Roads: ©2006-2011 TomTom  
Roads within US Forest Service Lands: FSTopo Data  
with limited Forest Service updates, 2009  
Names: GNS, 2011  
Hydrography: National Hydrography Dataset, 2010  
Contours: National Elevation Dataset, 2000  
Boundaries: Census, IBWC, IBC, USGS, 1972 - 2010



CONTOUR INTERVAL 20 FEET  
NORTH AMERICAN VERTICAL DATUM OF 1988

This map was produced to conform with the  
National Geospatial Program US Topo Product Standard, 2011.  
A metadata file associated with this product is draft version 0.6.1



QUADRANGLE LOCATION

Stigveas Mountain	Parks	Wing Mountain
Davenport Hill	Garland Prairie	Belmont
White Horse Lake	Sycamore Point	Dutton Hill

ROAD CLASSIFICATION

Interstate Route	State Route
US Route	Local Road
Ramp	4WD

Legend for road types: Interstate Route, US Route, Ramp, State Route, Local Road, 4WD, FS Primary Route, FS Passenger Route, FS High Clearance Route.

Check with local Forest Service unit for current travel conditions and restrictions.

GARLAND PRAIRIE, AZ  
2012

ADJOINING 7.5' QUADRANGLES