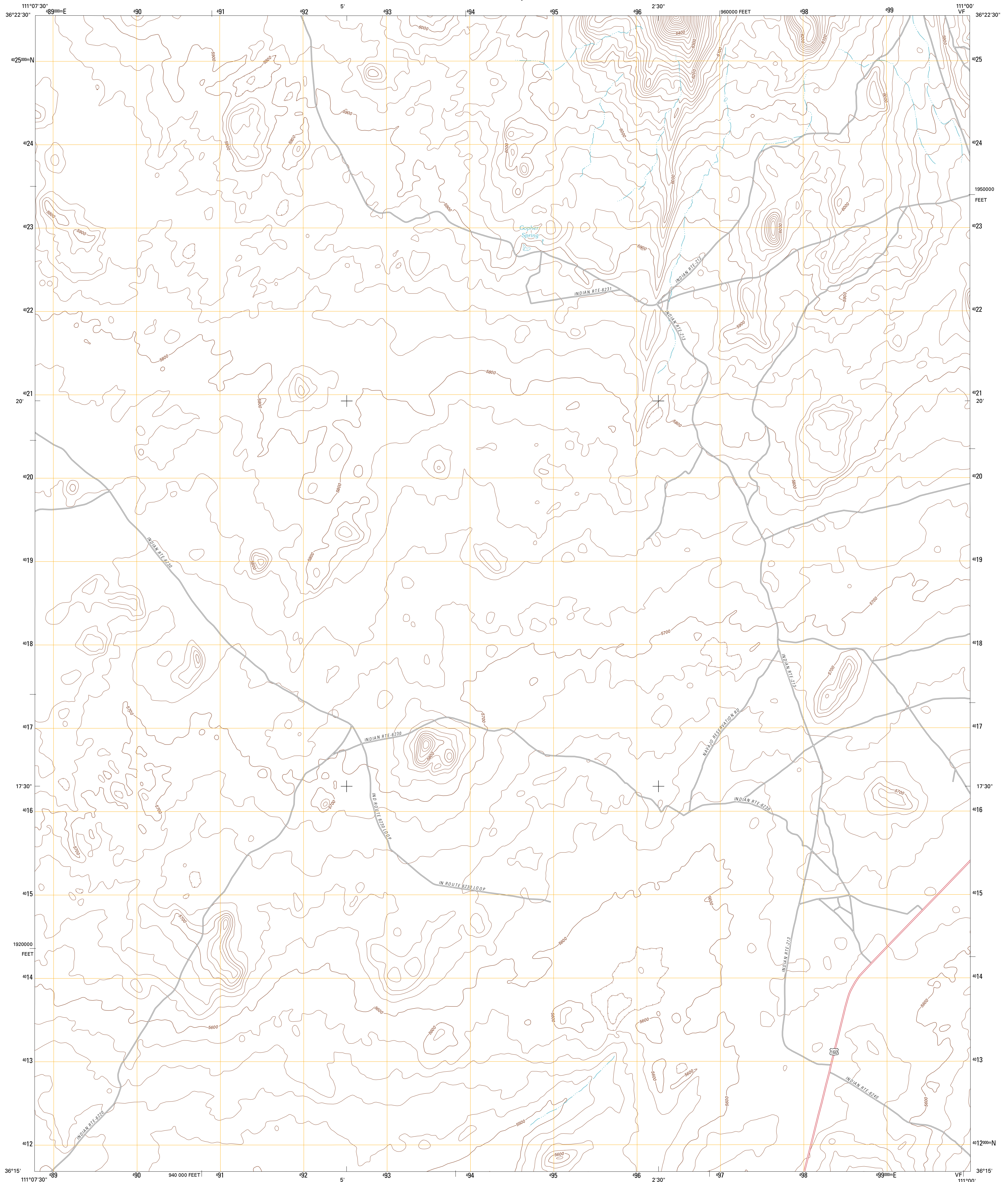




U.S. DEPARTMENT OF THE INTERIOR  
U. S. GEOLOGICAL SURVEY

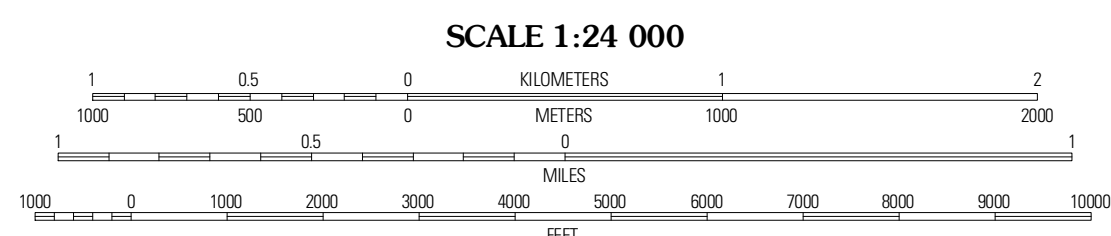
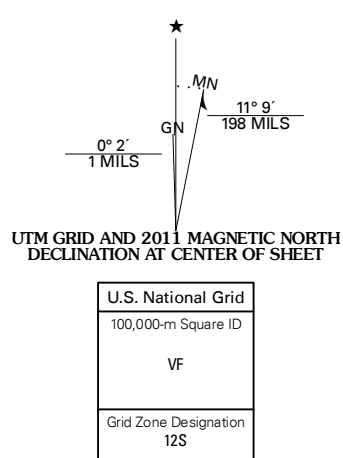


GOPHER SPRING QUADRANGLE  
ARIZONA-COCONINO CO.  
7.5-MINUTE SERIES



Produced by the United States Geological Survey  
North American Datum of 1983 (NAD83)  
World Geodetic System of 1984 (WGS84). Projection and  
1 000-meter grid: Universal Transverse Mercator, Zone 12S  
10 000-foot ticks: Arizona Coordinate System of 1983  
(central zone)

Imagery.....NAIP, June 2010  
Roads.....©2006-2011 TomTom  
Names.....GNIS, 2011  
Hydrography.....National Hydrography Dataset, 2007  
Contours.....National Elevation Dataset, 1999  
Boundaries.....Census, IBWC, IBC, USGS, 1972 - 2010



CONTOUR INTERVAL 20 FEET  
NORTH AMERICAN VERTICAL DATUM OF 1988

This map was produced to conform with the  
National Geospatial Program US Topo Product Standard, 2011.  
A metadata file associated with this product is draft version 0.6.1



ROAD CLASSIFICATION

Interstate Route State Route

US Route Local Road

Ramp 4WD

QUADRANGLE LOCATION

Preston Mesa North	Fig Whittier Well	White Mesa Arch
Preston Mesa South	Gopher Spring	Tomakea
Tuba City	Middle Mesa	Begababito Canyon

ADJOINING 7.5' QUADRANGLES

GOPHER SPRING, AZ  
2011