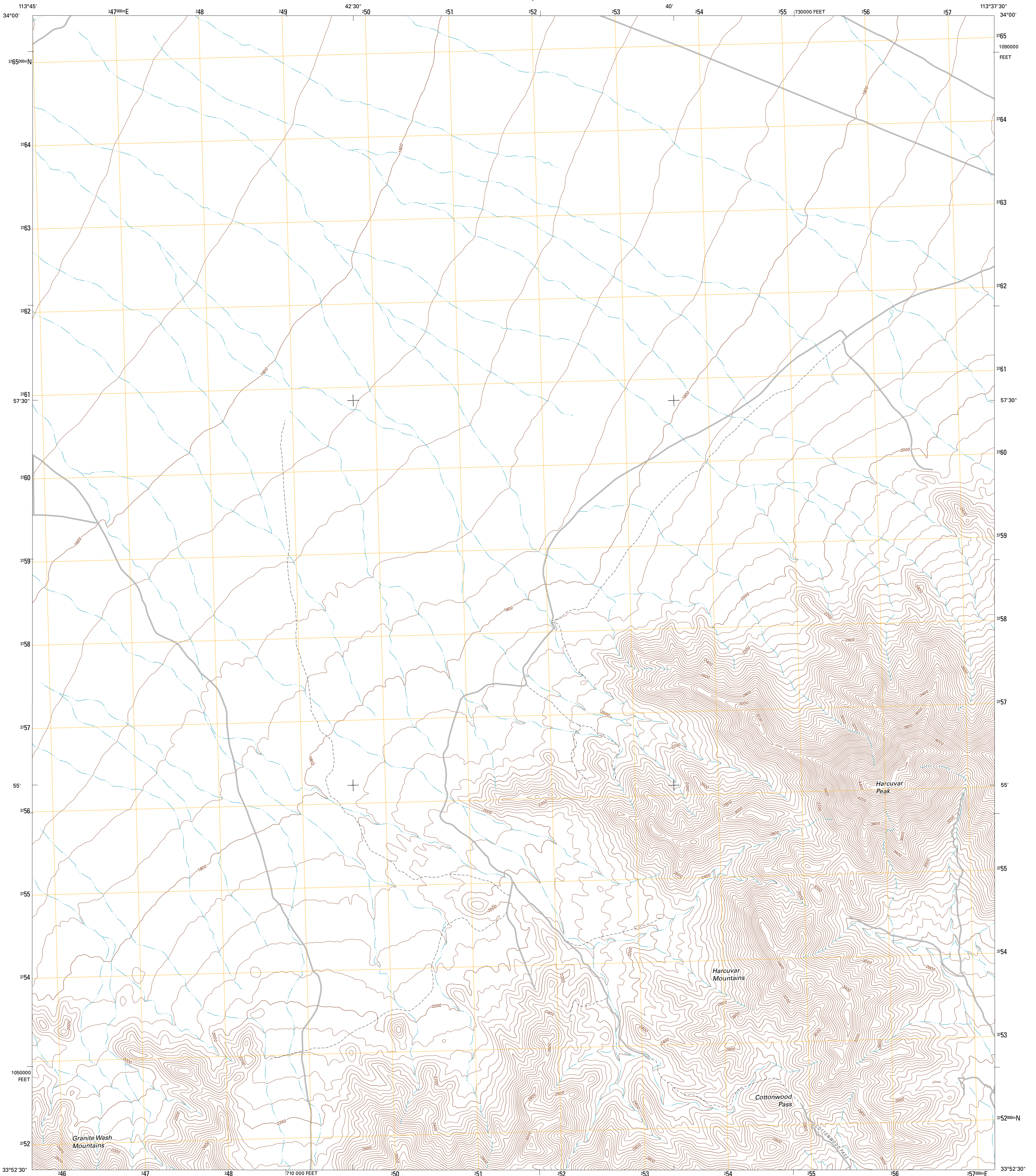




U.S. DEPARTMENT OF THE INTERIOR
U. S. GEOLOGICAL SURVEY

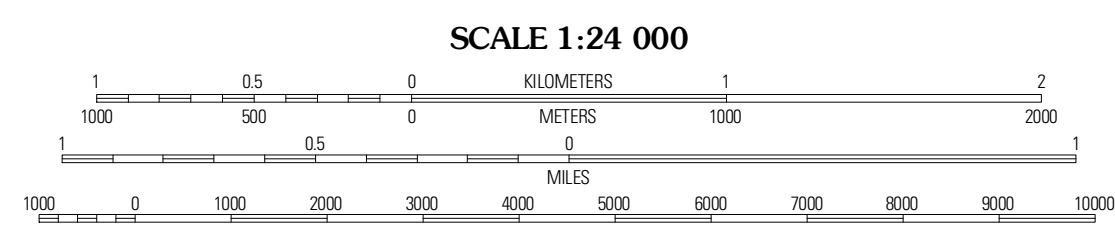
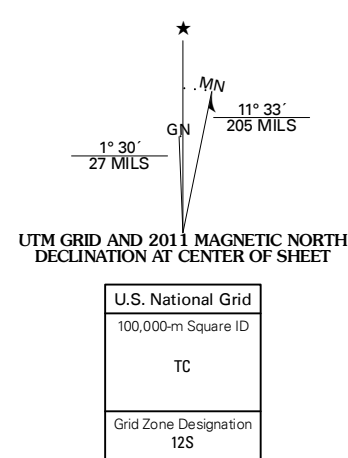


HARCUVAR PEAK QUADRANGLE
ARIZONA-LA PAZ CO.
7.5-MINUTE SERIES



Produced by the United States Geological Survey
North American Datum of 1983 (NAD83)
World Geodetic System of 1984 (WGS84), Projection and
1 000-meter grid; Universal Transverse Mercator, Zone 12S
10 000-foot ticks; Arizona Coordinate System of 1983 (west zone)

Imagery.....NAP, June 2010
Roads.....©2006-2011 Terra
Names.....GNIS, 2011
Hydrography.....National Hydrography Dataset, 2007
Contours.....National Elevation Dataset, 2003
Boundaries.....Census, IBWC, IBC, USGS, 1972-2010

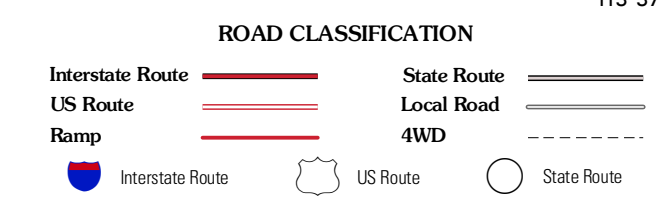


CONTOUR INTERVAL 40 FEET
NORTH AMERICAN VERTICAL DATUM OF 1988
This map was produced to conform with the
National Geospatial Program US Topo Product Standard, 2011.
A metadata file associated with this product is draft version 0.6.1



QUADRANGLE LOCATION

Butler Pass	Butler Well	Alamo Dam SE
Bouse Hills East	Harcuvar Peak	Cunningham Pass
East of Utting	Harcuvar	Salome



HARCUVAR PEAK, AZ
2011

ADJOINING 7.5 QUADRANGLES