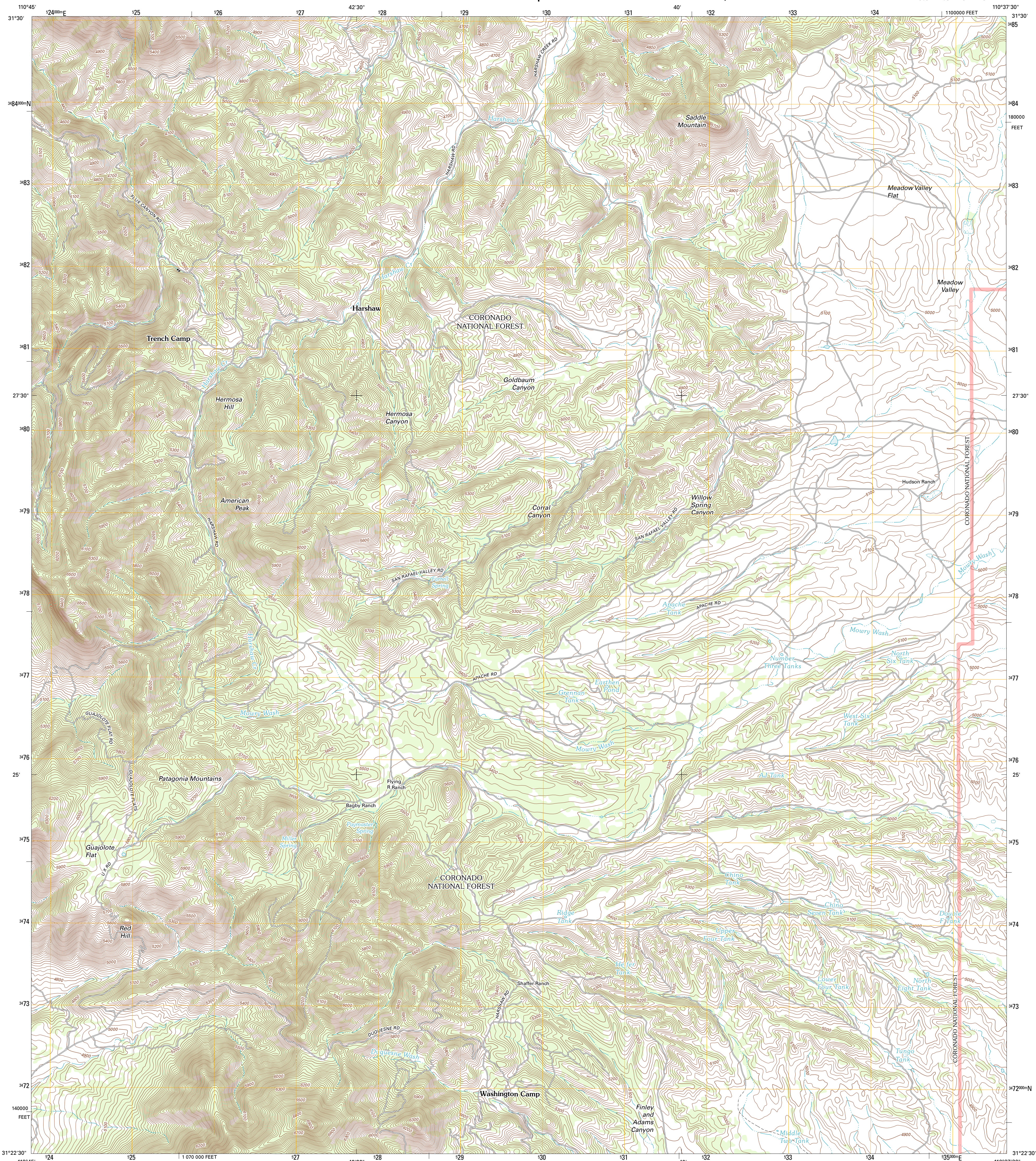




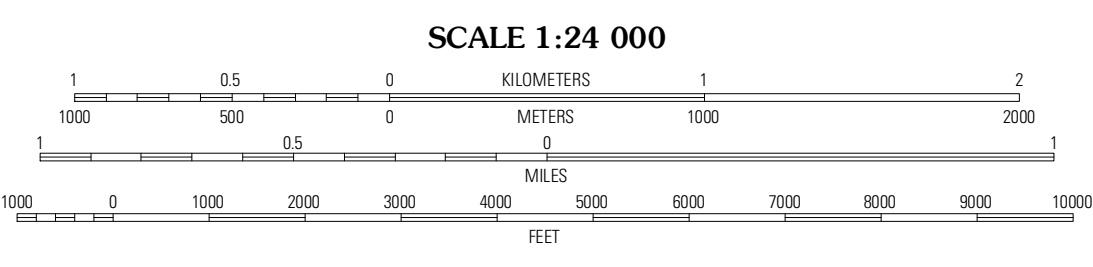
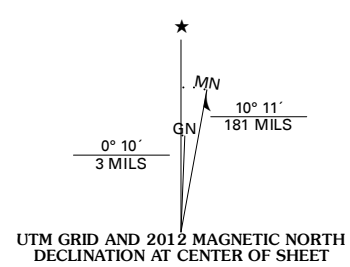
U.S. DEPARTMENT OF THE INTERIOR  
U. S. GEOLOGICAL SURVEY



HARSHAW QUADRANGLE  
ARIZONA-SANTA CRUZ CO.  
7.5-MINUTE SERIES



Produced by the United States Geological Survey  
North American Datum of 1983 (NAD83)  
World Geodetic System of 1984 (WGS84) Projection and  
1 000-meter grid: Universal Transverse Mercator, Zone 12R  
10 000-foot ticks: Arizona Coordinate System of 1983  
(central zone)



**ROAD CLASSIFICATION**

Interstate Route  
US Route  
Ramp  
State Route  
Local Road  
4WD  
FS Primary Route  
FS Passenger Route  
FS High Clearance Route

QUADRANGLE LOCATION

Patagonia	Mount Hughes	O'Donnell Canyon
Cumero Canyon	Harshaw	Canelo Pass
Kino Springs	Duquesne	Lochiel

Imagery.....NAP, June 2010  
Roads.....©2006-2011 TomTom  
Roads within US Forest Service Lands.....FSTopo Data with limited Forest Service updates, 2009  
Names.....GNIS, 2011  
Hydrography.....National Hydrography Dataset, 2010  
Contours.....National Elevation Dataset, 2003  
Boundaries.....Census, IBWC, IBC, USGS, 1972 - 2010

U.S. National Grid

100,000m Square ID	WV
Grid Zone Designation	12R

CONTOUR INTERVAL 20 FEET  
NORTH AMERICAN VERTICAL DATUM OF 1988

This map was produced to conform with the National Geospatial Program US Topo Product Standard, 2011. A metadata file associated with this product is draft version 0.6.1

HARSHAW, AZ  
2012

ADJOINING 7.5 QUADRANGLES