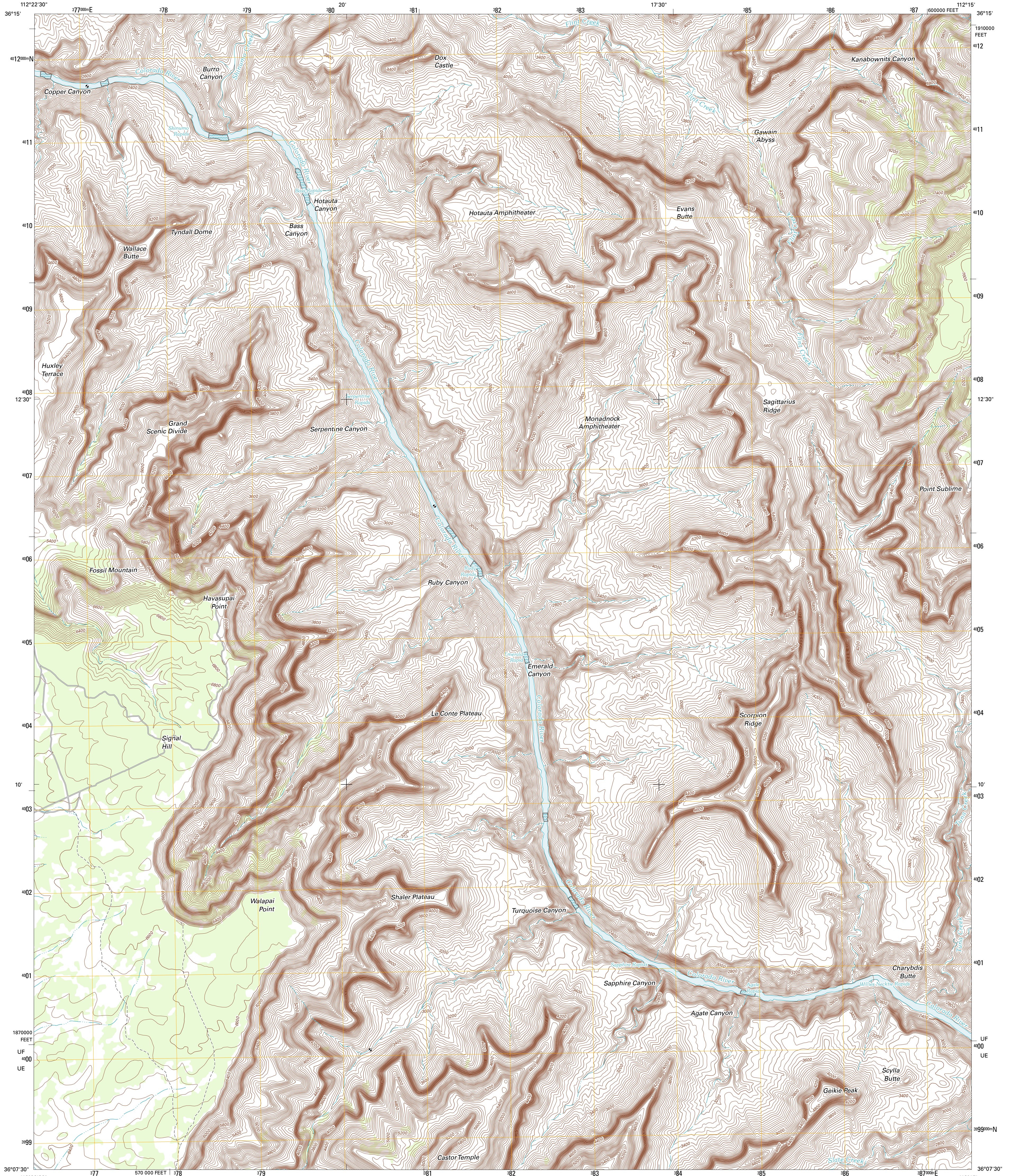




U.S. DEPARTMENT OF THE INTERIOR  
U. S. GEOLOGICAL SURVEY

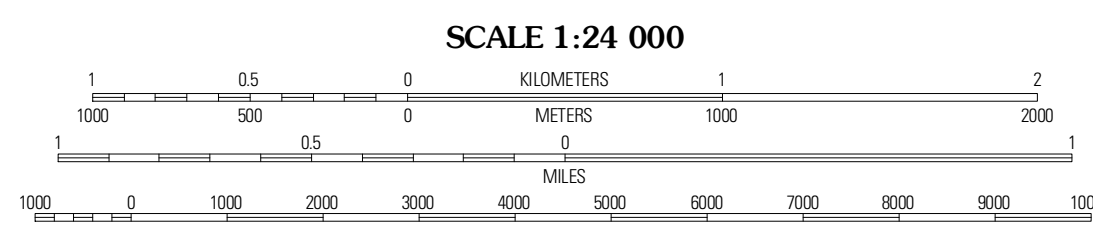
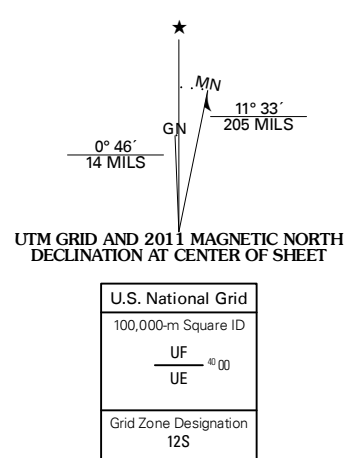


HAVASUPAI POINT QUADRANGLE  
ARIZONA-COCONINO CO.  
7.5-MINUTE SERIES



Produced by the United States Geological Survey  
North American Datum of 1983 (NAD83)  
World Geodetic System of 1984 (WGS84). Projection and  
1 000-meter grid: Universal Transverse Mercator, Zone 12S  
(10 000-foot ticks: Arizona Coordinate System of 1983  
(central zone))

Imagery: N.A.P., June 2010  
Roads: 2006-2011 TomTom  
Names: GNS, 2011  
Hydrography: National Hydrography Dataset, 2007  
Contours: National Elevation Dataset, 1999  
Boundaries: Census, BWC, IBC, USGS, 1972-2010



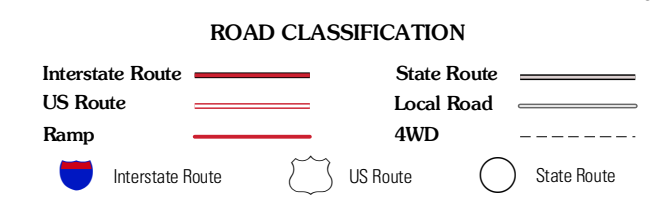
CONTOUR INTERVAL 40 FEET  
NORTH AMERICAN VERTICAL DATUM OF 1988

This map was produced to conform with the National Geospatial Program US Topo Product Standard, 2011. A metadata file associated with this product is draft version 0.6.1



QUADRANGLE LOCATION

Powell Plateau	King Arthur Castle	Kanabowmits Spring
Explorers Monument	Havasupai Point	Shiva Temple
Chamisa Tank	Plate Point	Grand Canyon



HAVASUPAI POINT, AZ  
2011

ADJOINING 7.5' QUADRANGLES