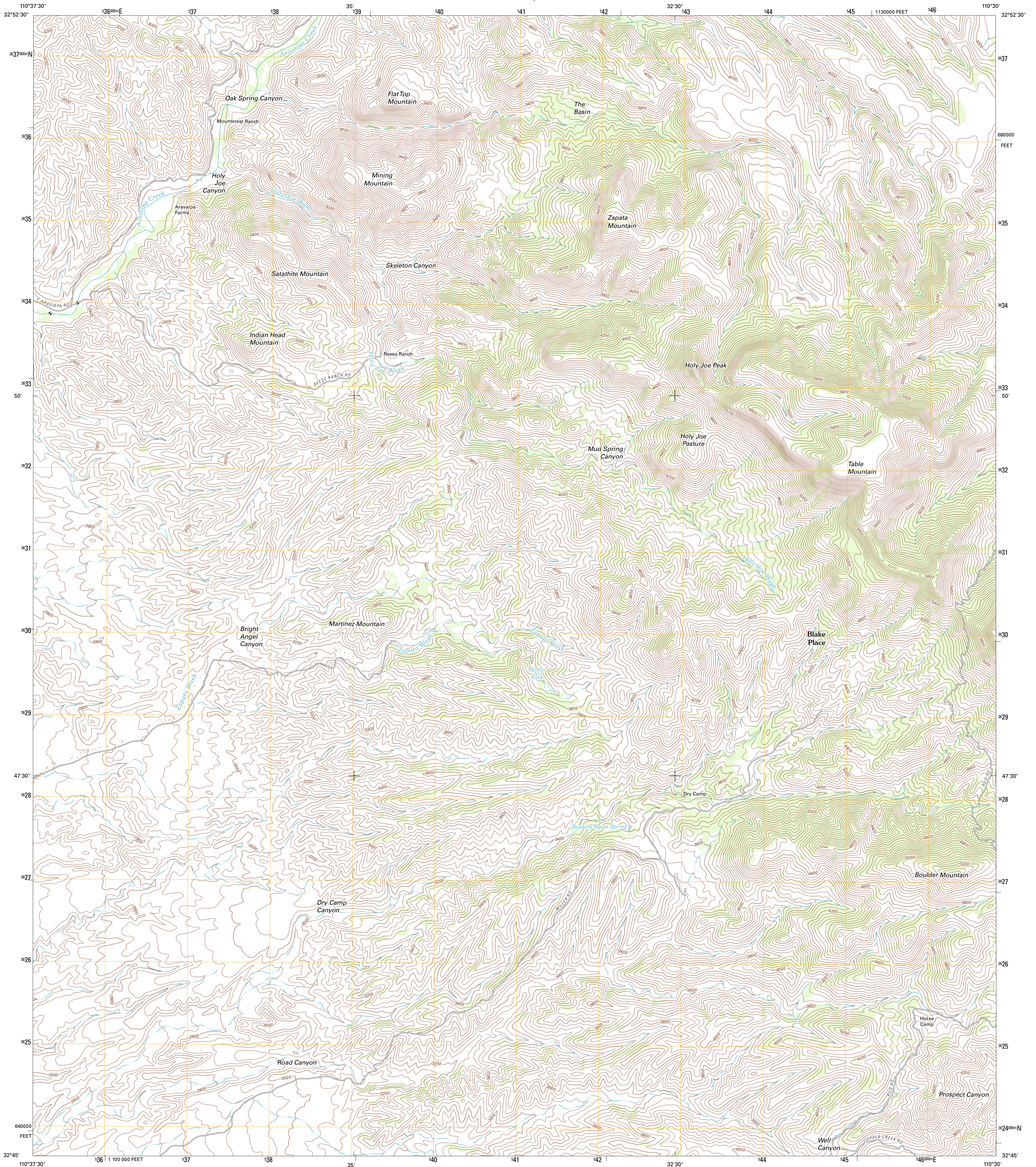




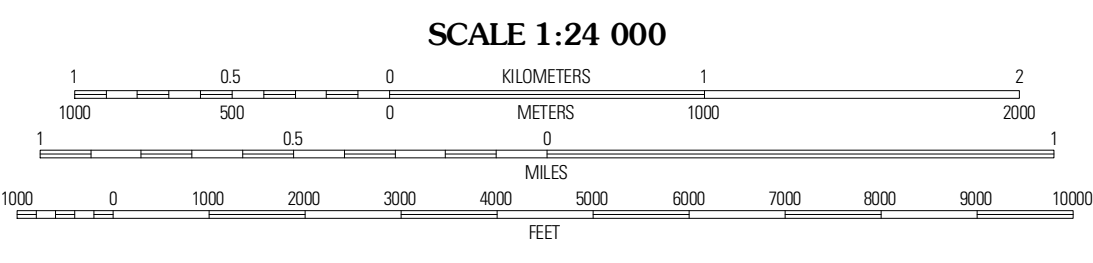
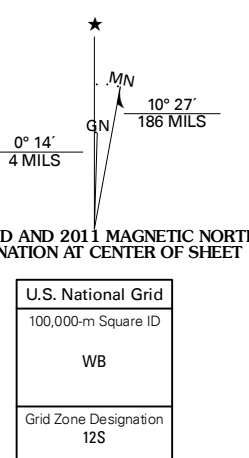
U.S. DEPARTMENT OF THE INTERIOR
U. S. GEOLOGICAL SURVEY



HOLY JOE PEAK QUADRANGLE
ARIZONA-PINAL CO.
7.5-MINUTE SERIES

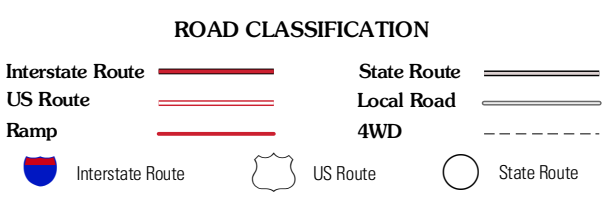


Produced by the United States Geological Survey
North American Datum of 1983 (NAD83)
World Geodetic System of 1984 (WGS84) Projection and
1 000-meter grid: Universal Transverse Mercator, Zone 12S
10 000-foot ticks: Arizona Coordinate System of 1983
(central zone)



CONTOUR INTERVAL 40 FEET
NORTH AMERICAN VERTICAL DATUM OF 1988

This map was produced to conform with the
National Geospatial Program US Topo Product Standard, 2011.
A metadata file associated with this product is draft version 0.6.1



QUADRANGLE LOCATION

Daleysville	Brandenburg Mountain	Booger Canyon
Lookout Mountain	Holy Joe Peak	Oak Grove Canyon
Mammoth	Clark Ranch	Rhodes Peak

ADJOINING 7.5' QUADRANGLES

HOLY JOE PEAK, AZ
2011