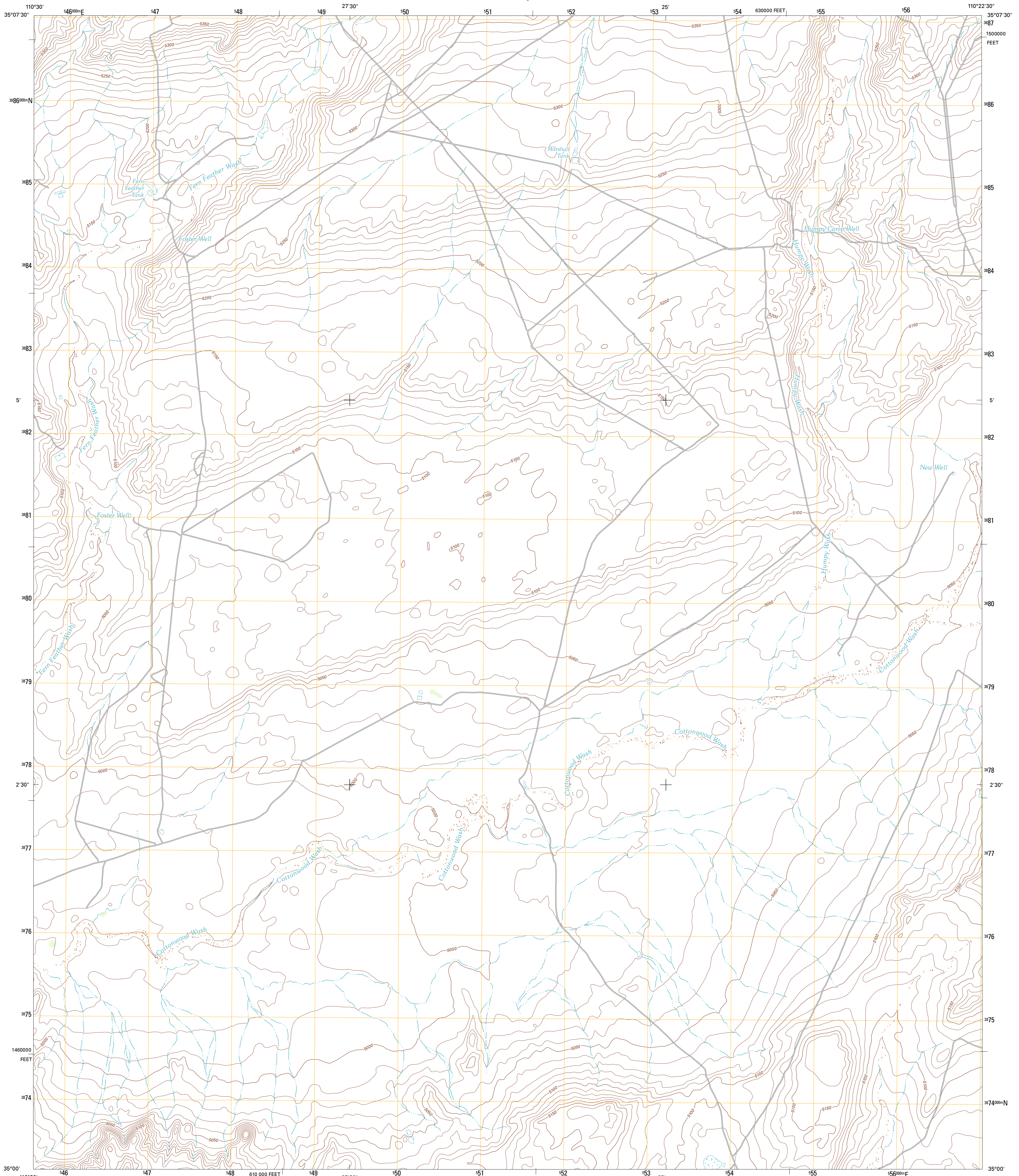




U.S. DEPARTMENT OF THE INTERIOR
U. S. GEOLOGICAL SURVEY

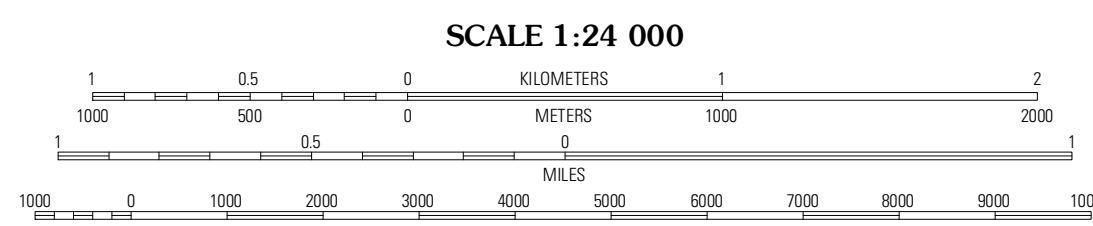
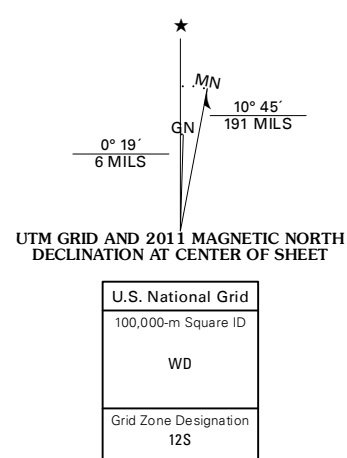


HUMPY CAMP WELL QUADRANGLE
ARIZONA-NAVAJO CO.
7.5-MINUTE SERIES



Produced by the United States Geological Survey
North American Datum of 1983 (NAD83)
World Geodetic System of 1984 (WGS84) Projection and
1 000-meter grid: Universal Transverse Mercator, Zone 12S
10 000-foot ticks: Arizona Coordinate System of 1983 (east zone)

Imagery: N.A.P., June 2010
Roads: ©2006-2011 TomTom
Names: G.N.S., 2011
Hydrography: National Hydrography Dataset, 2010
Contours: National Elevation Dataset, 1999
Boundaries: Census, IBWC, IBC, USGS, 1972 - 2010



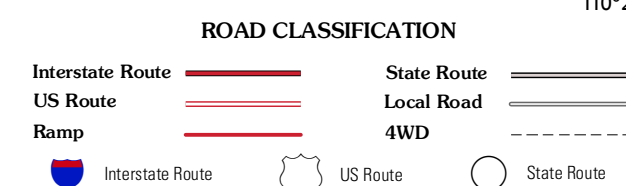
CONTOUR INTERVAL 10 FEET
NORTH AMERICAN VERTICAL DATUM OF 1988
This map was produced to conform with the
National Geospatial Program US Topo Product Standard, 2011.
A metadata file associated with this product is draft version 0.6.1



QUADRANGLE LOCATION

| | | |
|-----------------|------------------------|----------------------------|
| Winslow NE | Standing Horse Mesa | Rotten Bananas Butte |
| Rincon Ranch | Humpy Camp Well | Blair's Spring |
| Hibbard | Apache Butte | Joseph City |

ADJOINING 7.5 QUADRANGLES



HUMPY CAMP WELL, AZ
2011