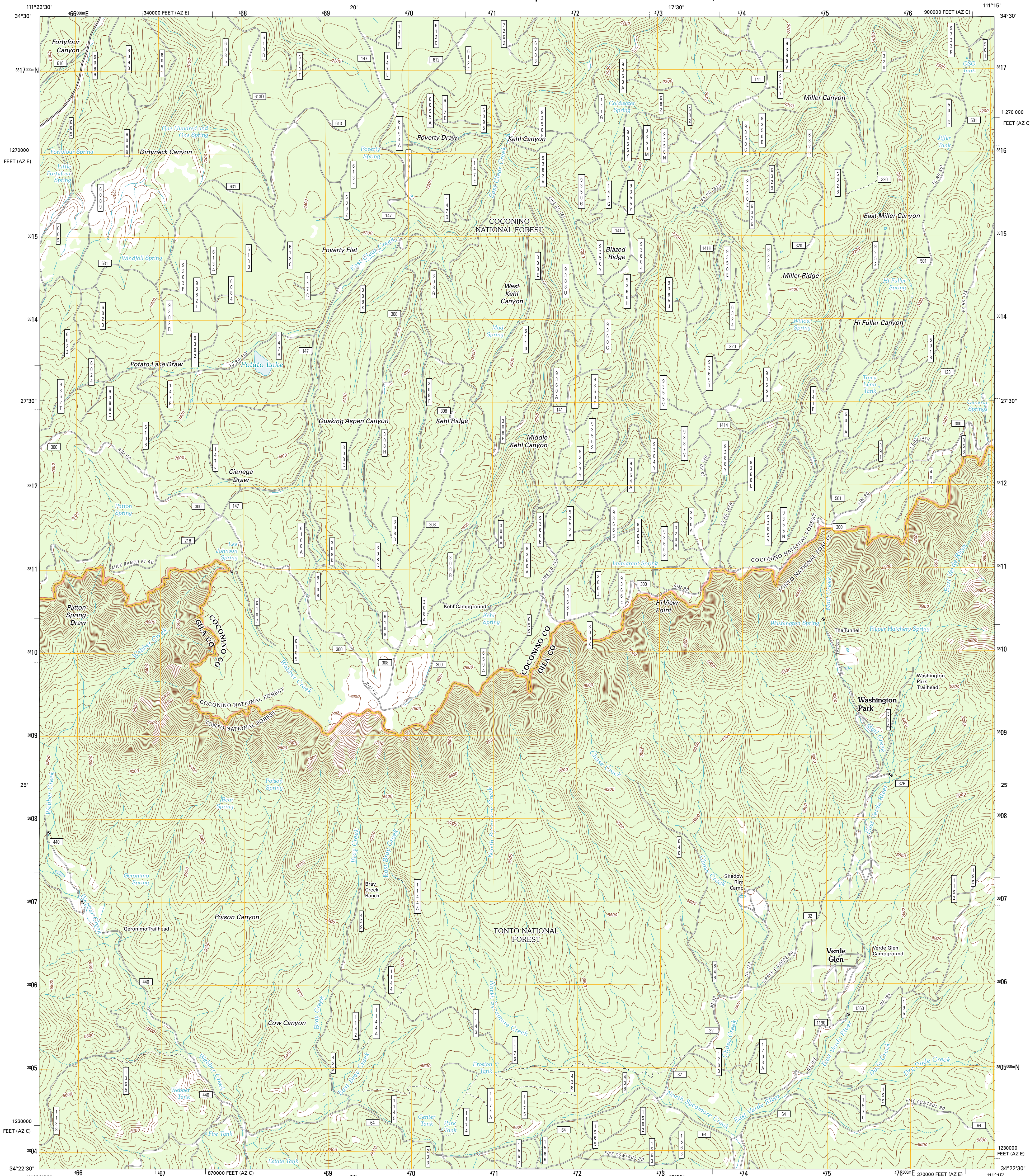




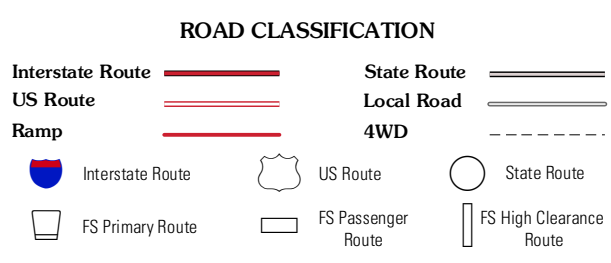
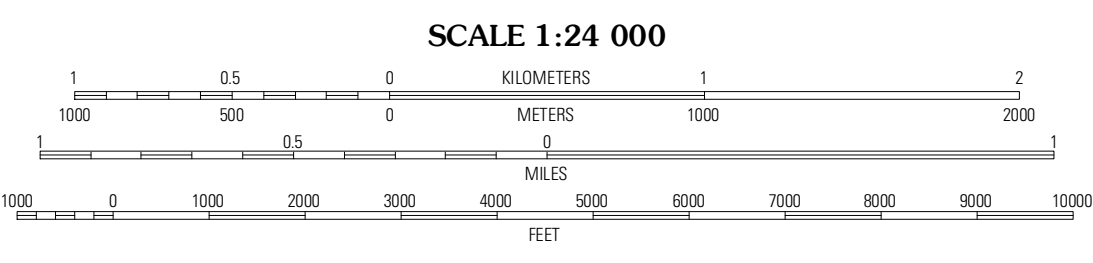
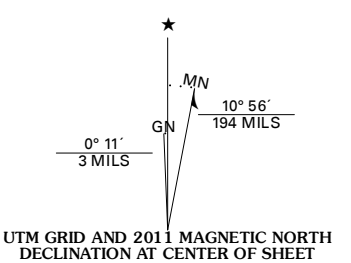
U.S. DEPARTMENT OF THE INTERIOR
U. S. GEOLOGICAL SURVEY



KEHL RIDGE QUADRANGLE
ARIZONA
7.5-MINUTE SERIES



Produced by the United States Geological Survey
North American Datum of 1983 (NAD83)
World Geodetic System of 1984 (WGS84). Projection and
1 000-meter grid: Universal Transverse Mercator, Zone 12S
10 000-foot ticks: Arizona Coordinate System of 1983
(central and east zones)



QUADRANGLE LOCATION

Calloway Butte	Long Valley	C.C. Crogie Reservoir
Pine	Kehl Ridge	Dane Canyon
Buckhead Mesa	Payson North	Diamond Point

ADJOINING 7.5 QUADRANGLES

Images:.....NAP, June 2010
Roads:.....©2006-2011 TomTom
Roads within US Forest Service Lands:.....FSTopo Data with limited Forest Service updates, 2009
Names:.....GNIS, 2011
Hydrography:.....National Hydrography Dataset, 2010
Contours:.....National Elevation Dataset, 2011
Boundaries:.....Census, IBWC, USGS, 1972 - 2010

U.S. National Grid

100,000-m Square ID	VD
Grid Zone Designation	12S

CONTOUR INTERVAL 40 FEET
NORTH AMERICAN VERTICAL DATUM OF 1988
This map was produced to conform with the National Geospatial Program US Topo Product Standard, 2011. A metadata file associated with this product is draft version 0.6.1

Check with local Forest Service unit for current travel conditions and restrictions.

KEHL RIDGE, AZ
2011