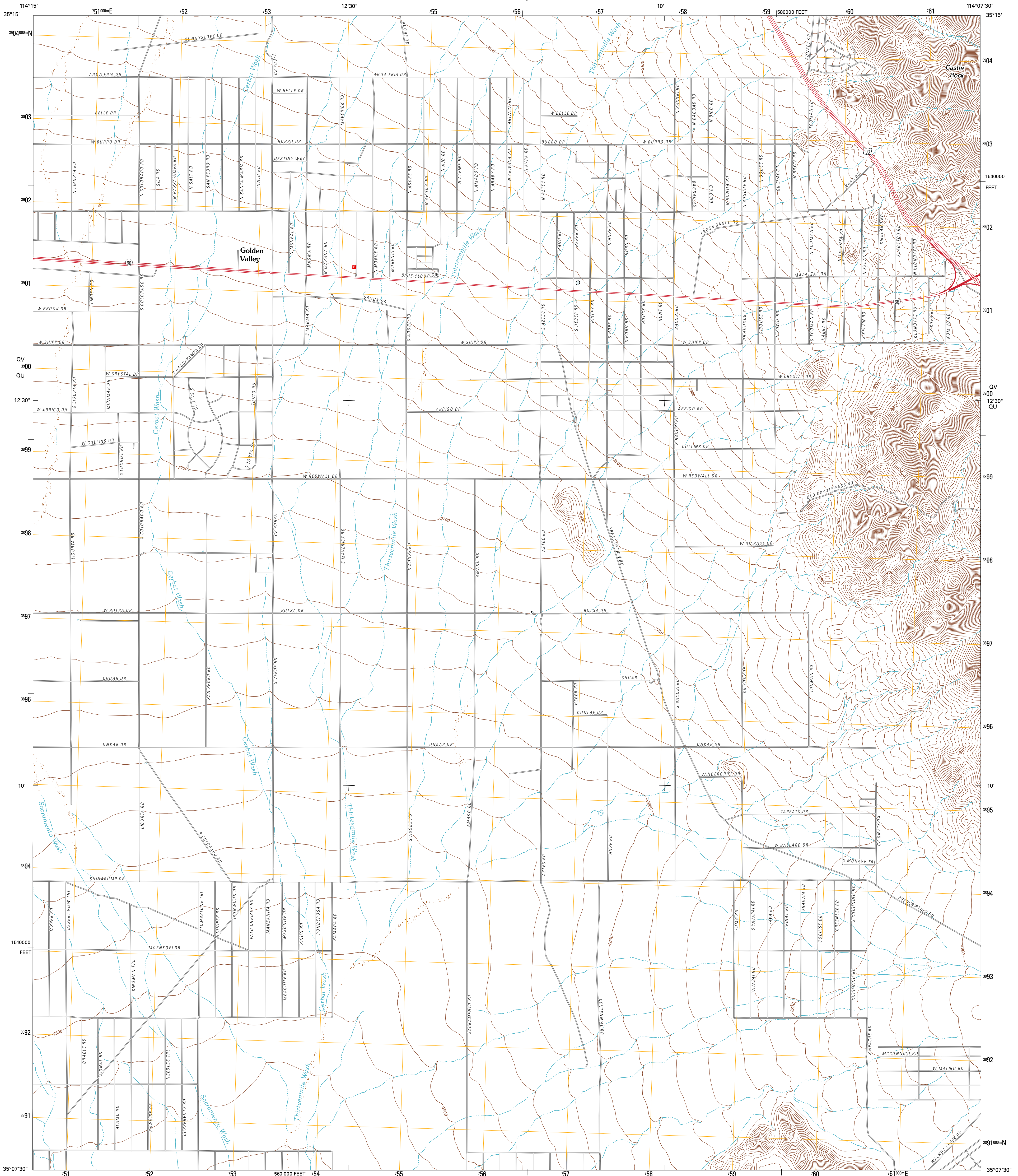




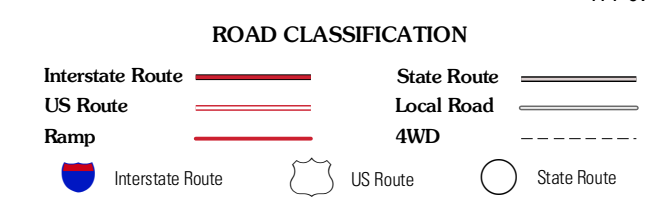
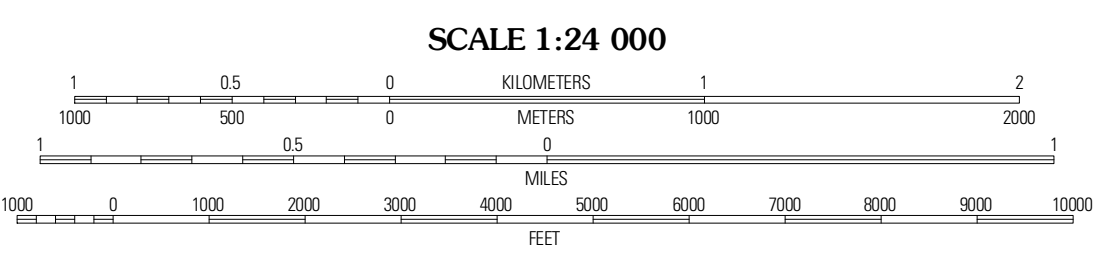
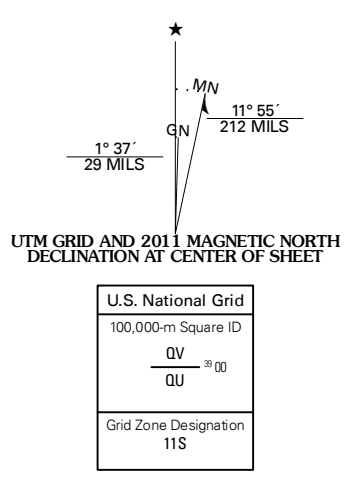
U.S. DEPARTMENT OF THE INTERIOR  
U. S. GEOLOGICAL SURVEY



KINGMAN NW QUADRANGLE  
ARIZONA-MOHAVE CO.  
7.5-MINUTE SERIES



Produced by the United States Geological Survey  
North American Datum of 1983 (NAD83)  
World Geodetic System of 1984 (WGS84) Projection and  
1 000-meter grid; Universal Transverse Mercator, Zone 11S  
10 000-foot ticks; Arizona Coordinate System of 1983 (west zone)



QUADRANGLE LOCATION

Grasshopper Junction SE	Cerbat	Stockton Hill
Secret Pass	<b>Kingman NW</b>	Kingman
Mount Nutt	Kingman SW	Kingman SE

ADJOINING 7.5 QUADRANGLES

CONTOUR INTERVAL 20 FEET  
NORTH AMERICAN VERTICAL DATUM OF 1988

This map was produced to conform with the National Geospatial Program US Topo Product Standard, 2011. A metadata file associated with this product is draft version 0.6.1

KINGMAN NW, AZ  
2011