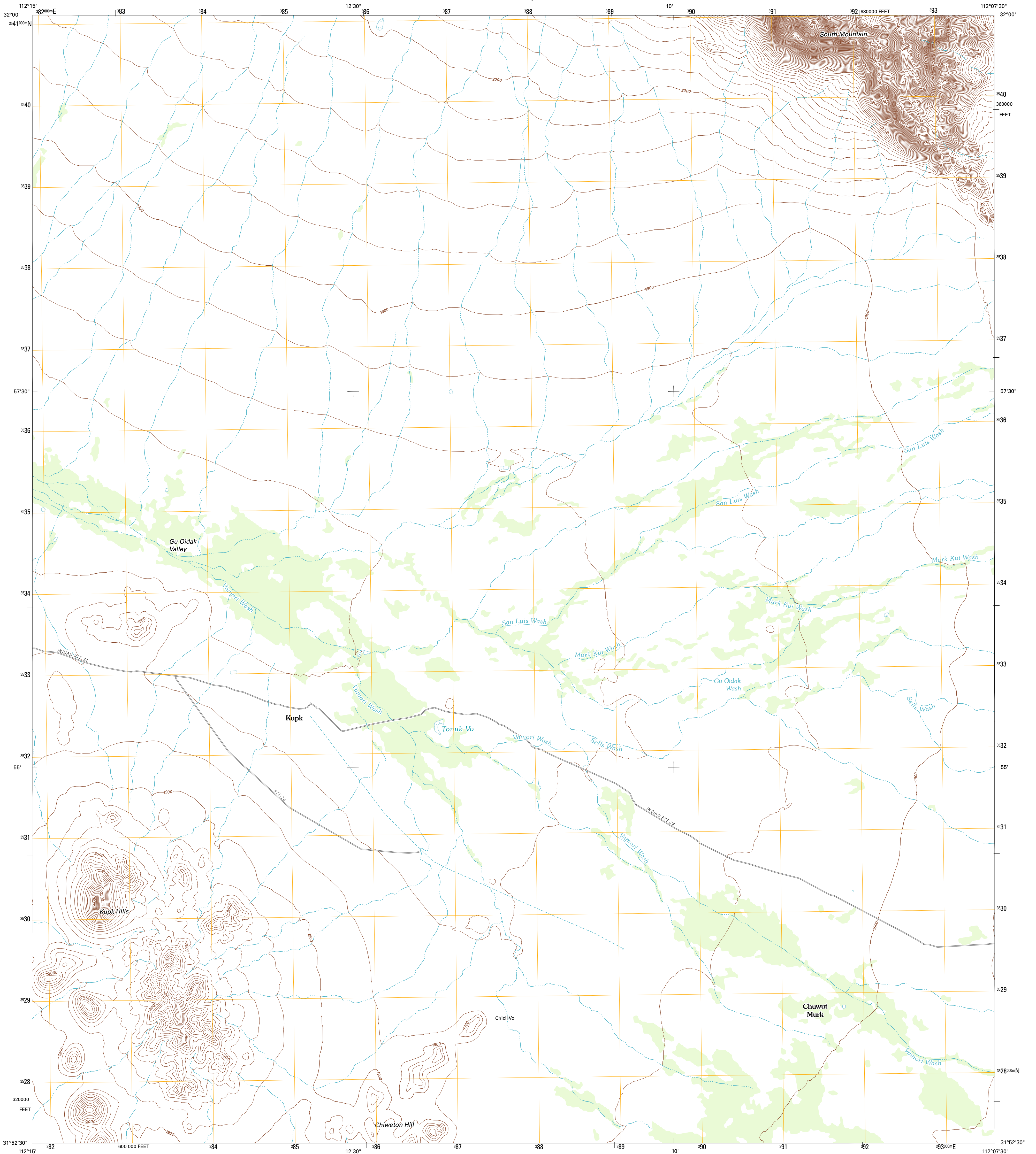




U.S. DEPARTMENT OF THE INTERIOR  
U. S. GEOLOGICAL SURVEY

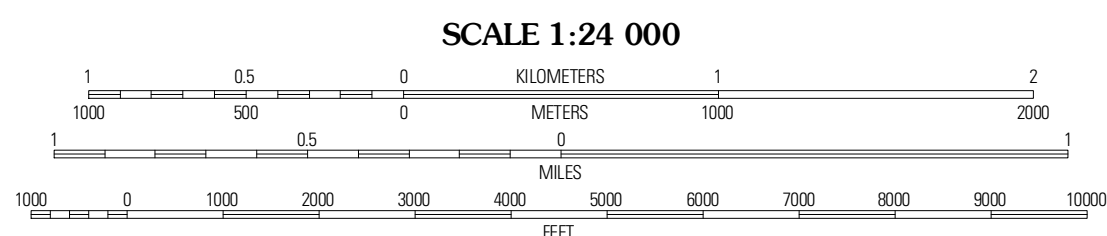
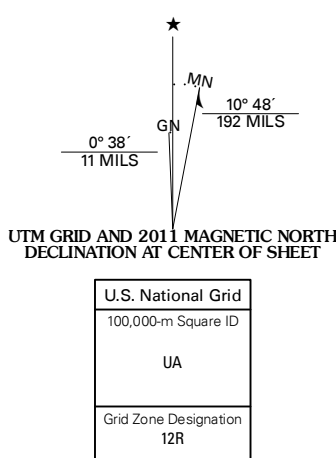


KUPK QUADRANGLE  
ARIZONA-PIMA CO.  
7.5-MINUTE SERIES



Produced by the United States Geological Survey  
North American Datum of 1983 (NAD83)  
World Geodetic System of 1984 (WGS84). Projection and  
1 000-meter grid: Universal Transverse Mercator, Zone 12R  
10 000-foot ticks: Arizona Coordinate System of 1983  
(central zone)

Imagery.....NIP, June 2010  
Roads.....©2006-2011 TomTom  
Names.....GNIS, 2011  
Hydrography.....National Hydrography Dataset, 2007  
Contours.....National Elevation Dataset, 2003  
Boundaries.....Census, IBWC, IBC, USGS, 1972 - 2010



CONTOUR INTERVAL 20 FEET  
NORTH AMERICAN VERTICAL DATUM OF 1988

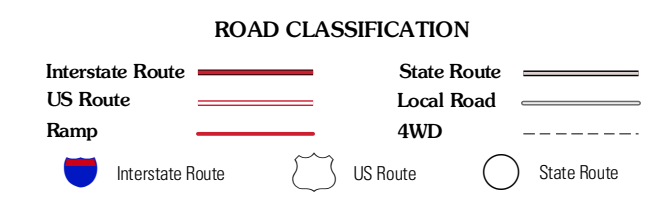
This map was produced to conform with the  
National Geospatial Program US Topo Product Standard, 2011.  
A metadata file associated with this product is draft version 0.6.1



QUADRANGLE LOCATION

Platano	Ben Nevis Mountain	Vainom Kug
Kom Vo	<b>Kupk</b>	Gu Oidak
Papago Farms	Kots Kug Ranch	Chakut Kuk

ADJOINING 7.5 QUADRANGLES



KUPK, AZ  
2011