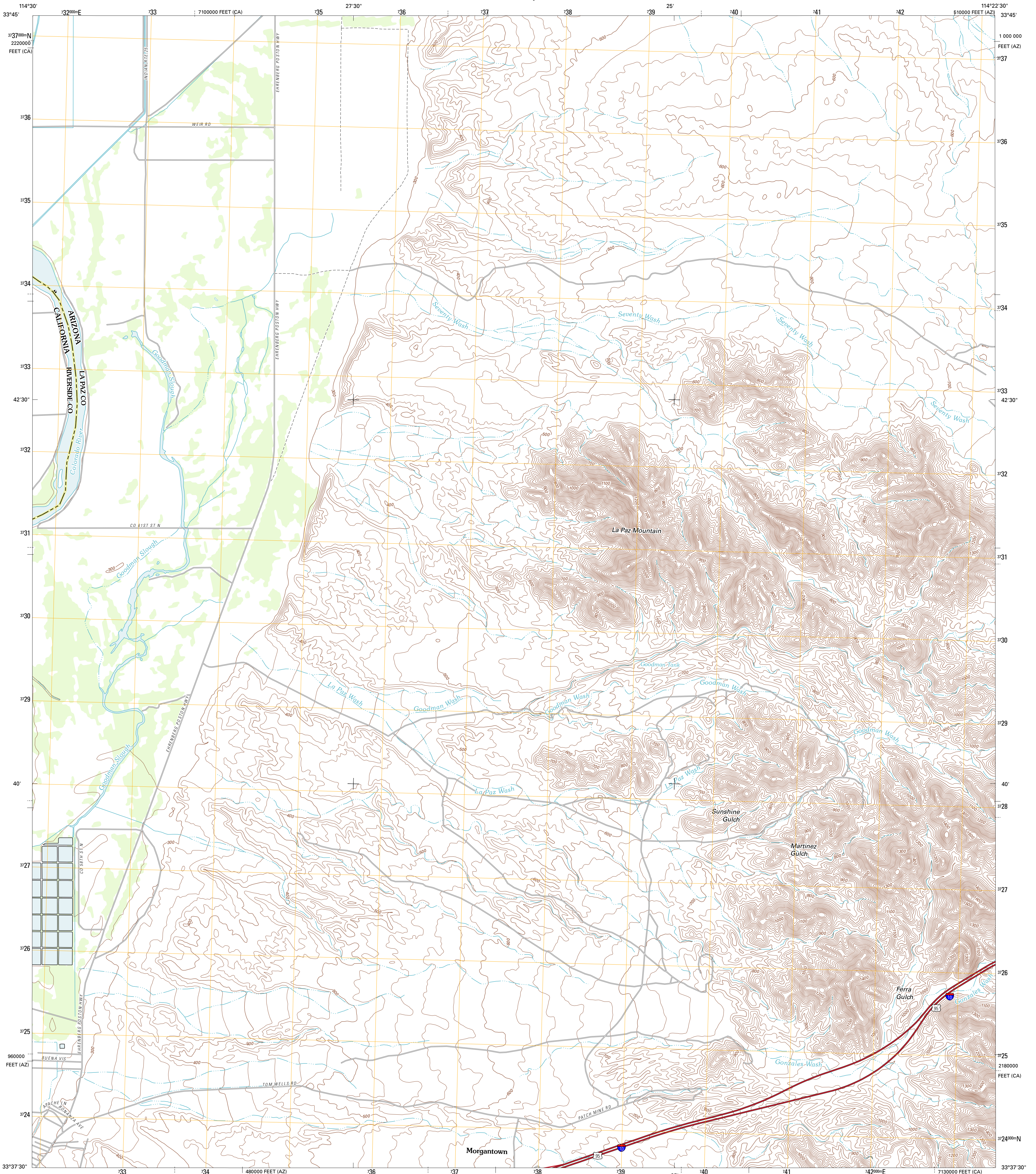




U.S. DEPARTMENT OF THE INTERIOR
U. S. GEOLOGICAL SURVEY

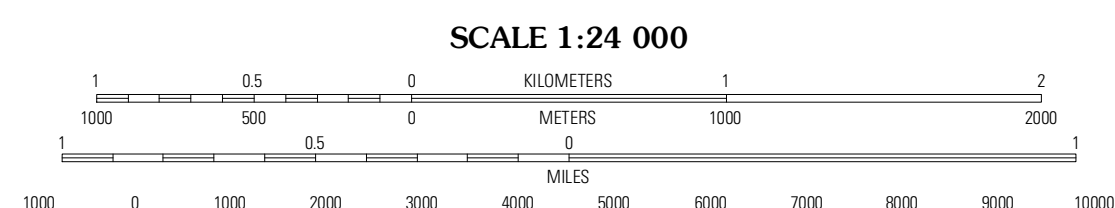
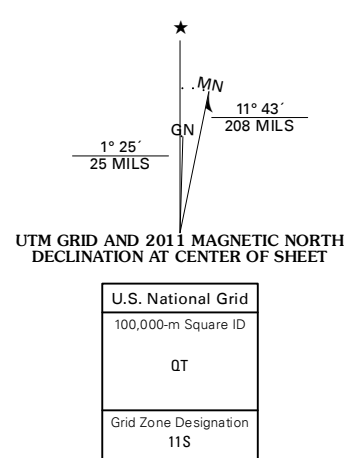


LA PAZ MOUNTAIN QUADRANGLE
ARIZONA-CALIFORNIA
7.5-MINUTE SERIES



Produced by the United States Geological Survey
North American Datum of 1983 (NAD83)
World Geodetic System of 1984 (WGS84). Projection and
1 000-meter grid: Universal Transverse Mercator, Zone 11S
10 000-foot ticks: Arizona Coordinate System of 1983 (west
zone), California Coordinate System of 1983 (6 zone)

Imagery: NADIP, June 2010
Roads: ©2006-2011 TomTom
Names: GNS, 2011
Hydrography: National Hydrography Dataset, 2010
Contours: National Elevation Dataset, 2002
Boundaries: Census, BWC, BIC, USGS, 1972 - 2010



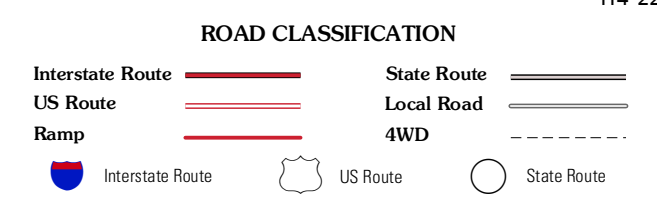
CONTOUR INTERVAL 20 FEET
NORTH AMERICAN VERTICAL DATUM OF 1988
This map was produced to conform with the
National Geospatial Program US Topo Product Standard, 2011.
A metadata file associated with this product is draft version 0.6.1



QUADRANGLE LOCATION

Big Mesa Mountains SE	Moon Mountain	Moon Mountain SE
Blythe NE	La Paz Mountain	Middle Camp Mountain
Blythe	Dome Rock Mountain SW	Cunningham Mountain

ADJOINING 7.5' QUADRANGLES



LA PAZ MOUNTAIN, AZ-CA
2011