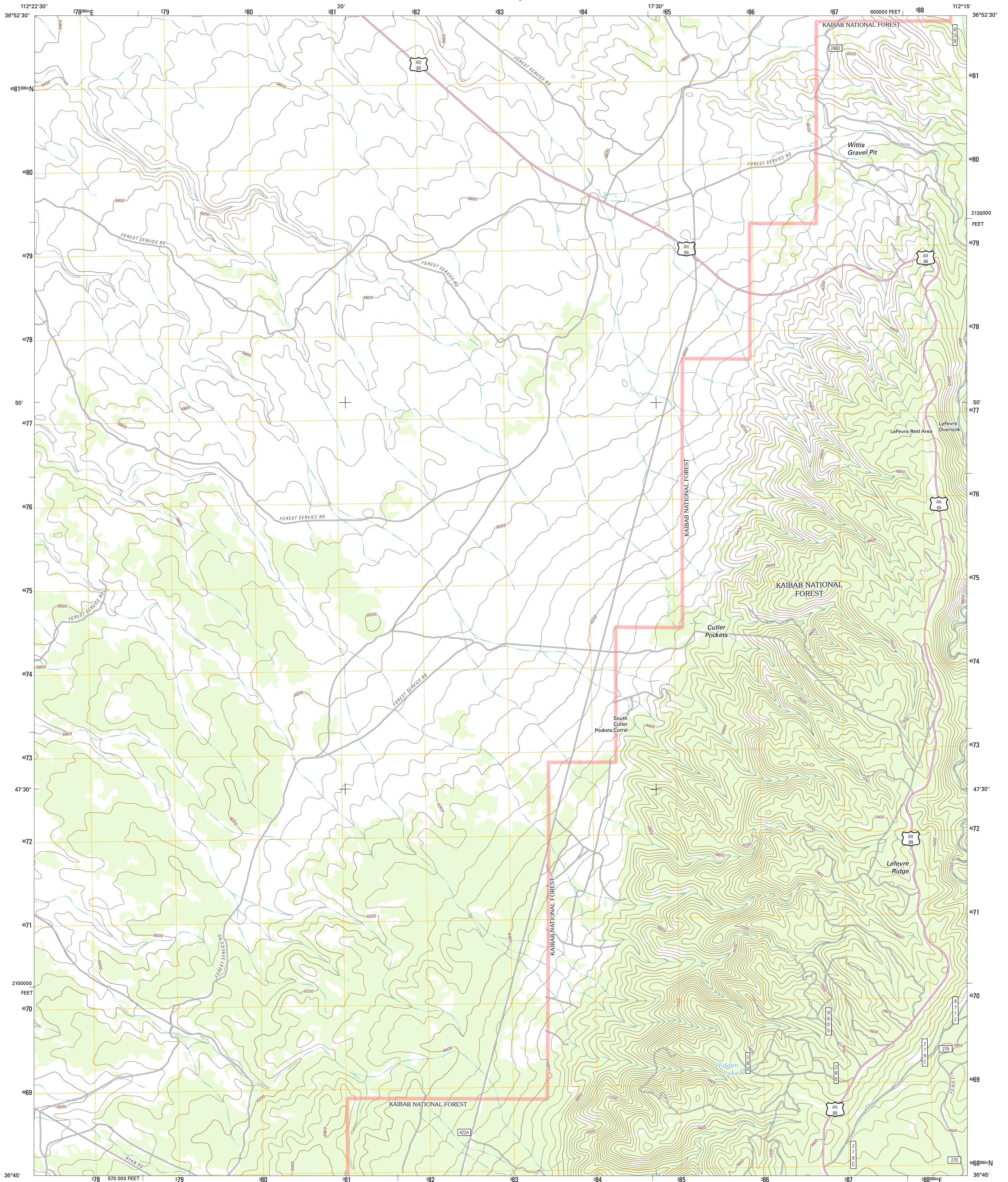




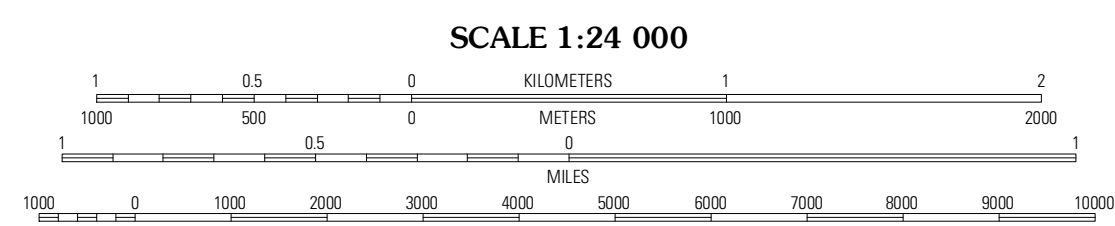
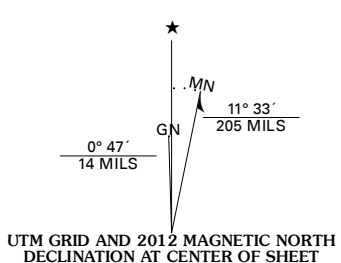
U.S. DEPARTMENT OF THE INTERIOR
U. S. GEOLOGICAL SURVEY



LE FEVRE RIDGE QUADRANGLE
ARIZONA-COCONINO CO.
7.5-MINUTE SERIES



Produced by the United States Geological Survey
North American Datum of 1983 (NAD83)
World Geodetic System of 1984 (WGS84). Projection and
1 000-meter grid: Universal Transverse Mercator, Zone 12S
10 000-foot ticks: Arizona Coordinate System of 1983
(central zone)



ROAD CLASSIFICATION

Interstate Route	State Route
US Route	Local Road
Ramp	4WD
FS Primary Route	FS Passenger Route
	FS High Clearance Route

Check with local Forest Service unit for current travel conditions and restrictions.

QUADRANGLE LOCATION

Shinarump Point	Miggins Flat	Buck Pasture Canyon
White Sage Flat	Le Fevre Ridge	Cooper Ridge
Toothpick Ridge	Warm Springs Canyon	Jacob Lake

ADJOINING 7.5' QUADRANGLES

Imagery: NAD, June 2010
Roads: ©2006-2011 TomTom
Roads within US Forest Service Lands: ©FS Topo Data with limited Forest Service updates, 2009
Names: ©GNIS, 2011
Hydrography: National Hydrography Dataset, 2010
Contours: National Elevation Dataset, 1999
Boundaries: Census, IBWC, IBC, USGS, 1972 - 2010

U.S. National Grid

100,000-m Square ID	UF
Grid Zone Designation	12S

CONTOUR INTERVAL 40 FEET
NORTH AMERICAN VERTICAL DATUM OF 1988
This map was produced to conform with the National Geospatial Program US Topo Product Standard, 2011. A metadata file associated with this product is draft version 0.6.1

LE FEVRE RIDGE, AZ
2012