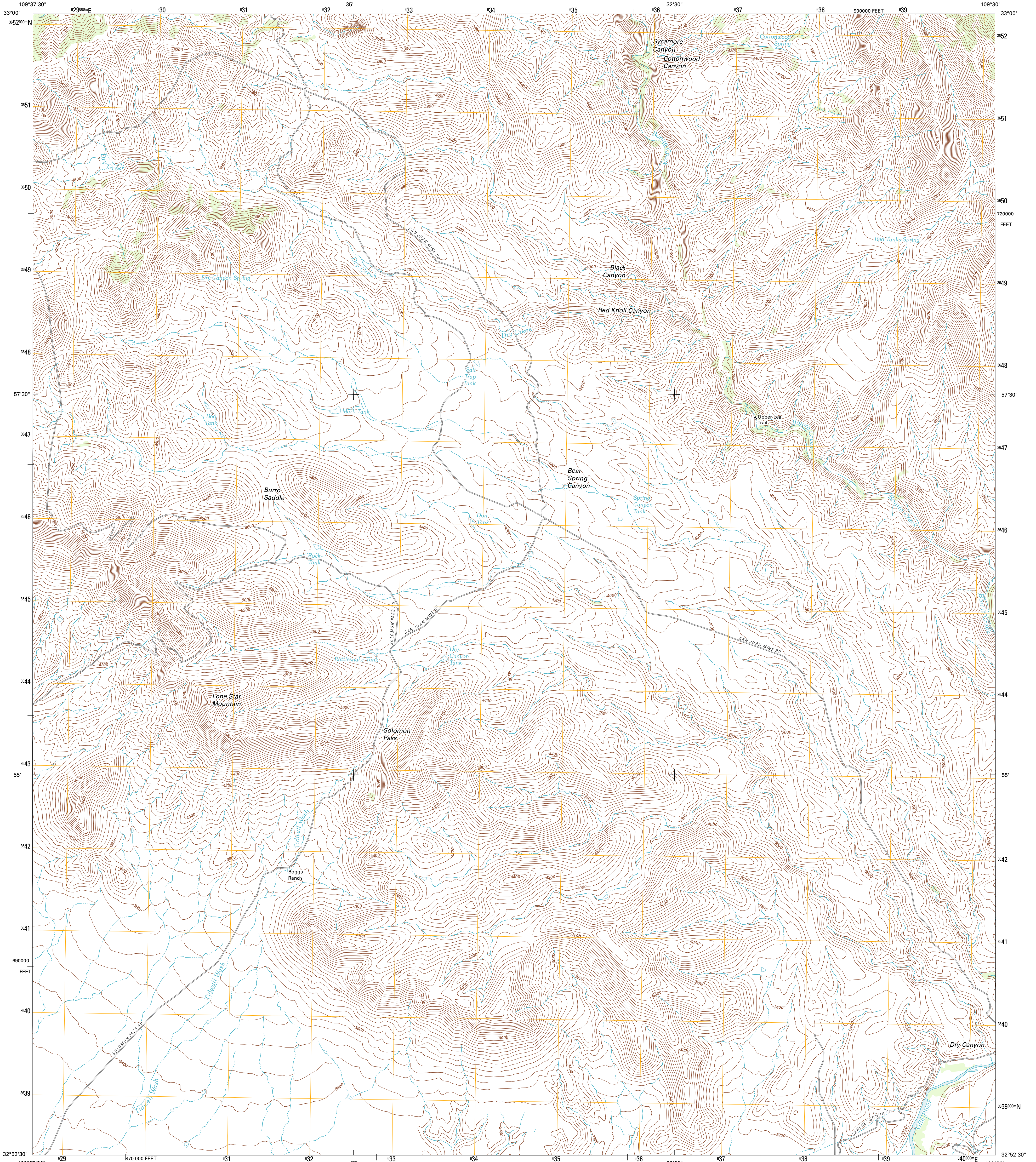




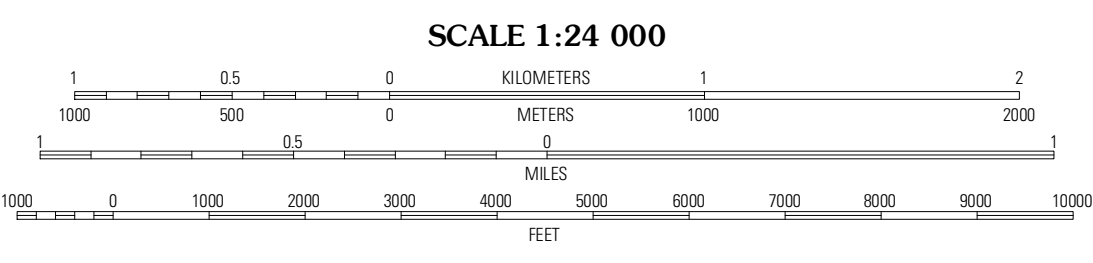
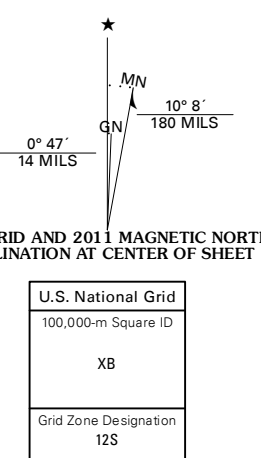
U.S. DEPARTMENT OF THE INTERIOR
U. S. GEOLOGICAL SURVEY



LONE STAR MOUNTAIN QUADRANGLE
ARIZONA-GRAHAM CO.
7.5-MINUTE SERIES



Produced by the United States Geological Survey
North American Datum of 1983 (NAD83)
World Geodetic System of 1984 (WGS84). Projection and
1 000-meter grid: Universal Transverse Mercator, Zone 12S
10 000-foot ticks: Arizona Coordinate System of 1983 (east
zone)



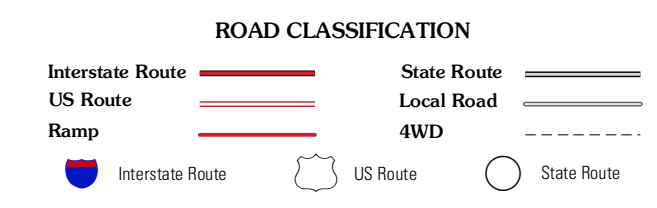
CONTOUR INTERVAL 40 FEET
NORTH AMERICAN VERTICAL DATUM OF 1988

This map was produced to conform with the
National Geospatial Program US Topo Product Standard, 2011.
A metadata file associated with this product is draft version 0.6.1



QUADRANGLE LOCATION

Byce Mountain	Bonita Spring	Copperplate Gulch
Weber Peak	Lone Star Mountain	Gila Box
Safford	San Jose	Tollgate Tank



LONE STAR MOUNTAIN, AZ
2011

ADJOINING 7.5' QUADRANGLES