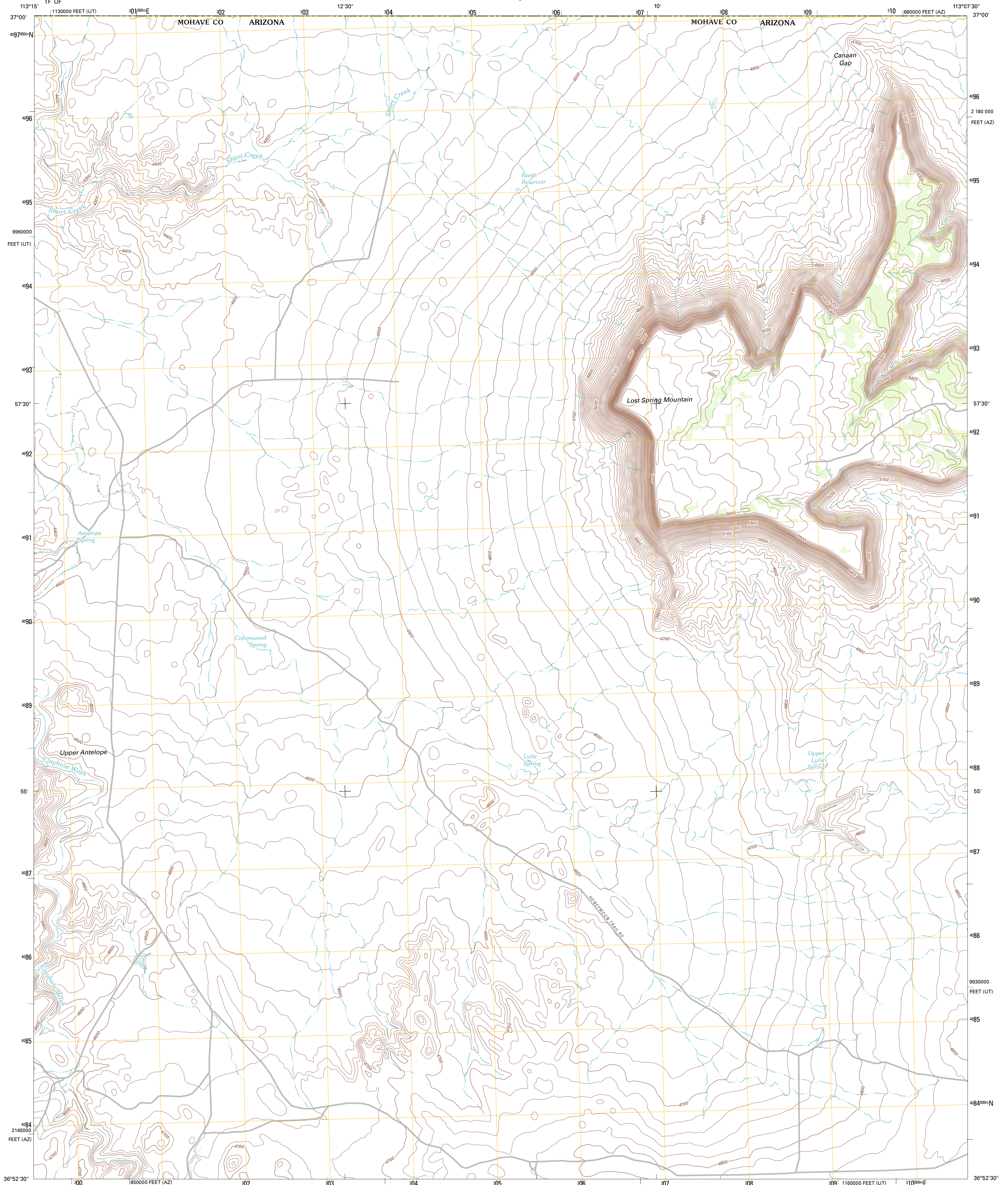




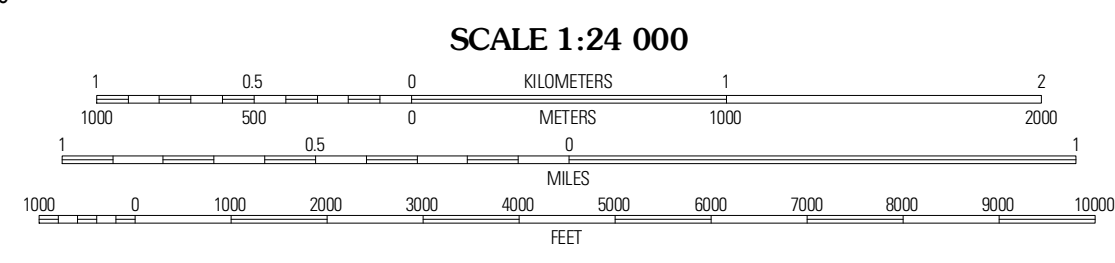
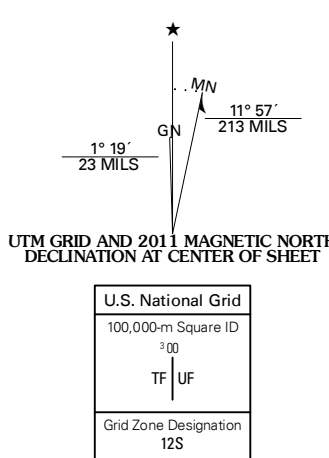
U.S. DEPARTMENT OF THE INTERIOR
U. S. GEOLOGICAL SURVEY



LOST SPRING MOUNTAIN WEST QUADRANGLE
ARIZONA-UTAH
7.5-MINUTE SERIES



Produced by the United States Geological Survey
North American Datum of 1983 (NAD83)
World Geodetic System of 1984 (WGS84). Projection and
1 000-meter grid: Universal Transverse Mercator, Zone 12S
10 000-foot ticks: Arizona Coordinate System of 1983 (west
zone), Utah Coordinate System of 1983 (south zone)



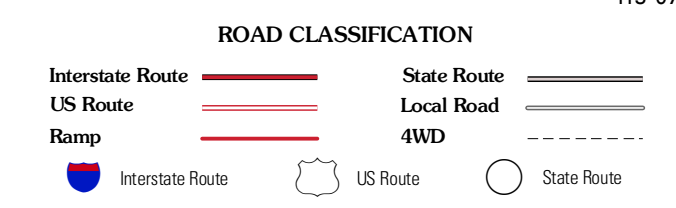
CONTOUR INTERVAL 20 FEET
NORTH AMERICAN VERTICAL DATUM OF 1988
This map was produced to conform with the
National Geospatial Program US Topo Product Standard, 2011.
A metadata file associated with this product is draft version 0.6.1



QUADRANGLE LOCATION

The Divide	Little Creek Mountain	Smithsonian Butte
Rock Canyon	Lost Spring Mountain West	Lost Spring Mountain East
Gyp Pocket	White Pockets	Formaster Well

ADJOINING 7.5 QUADRANGLES



LOST SPRING MOUNTAIN WEST, AZ-UT
2011