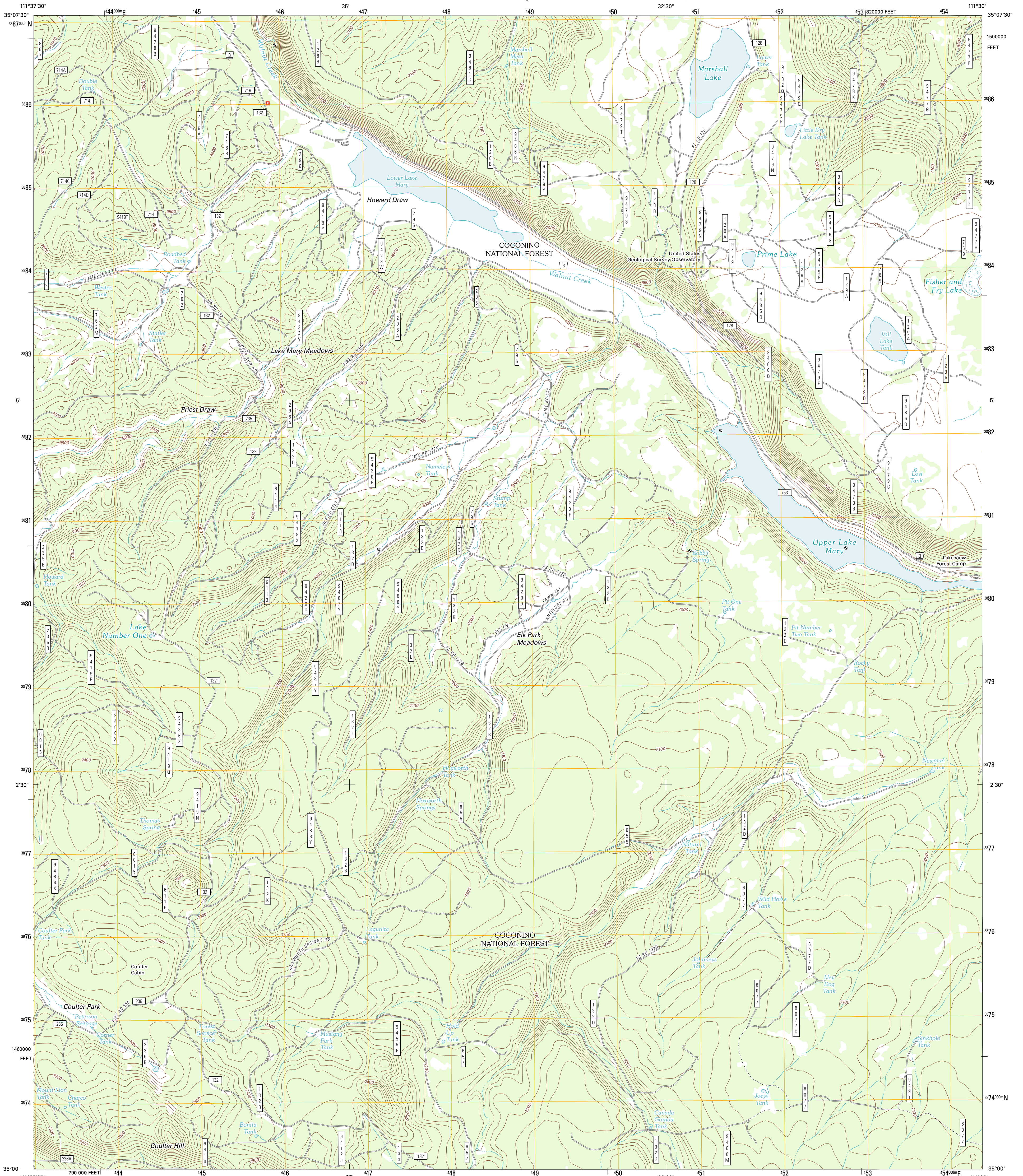




U.S. DEPARTMENT OF THE INTERIOR
U. S. GEOLOGICAL SURVEY

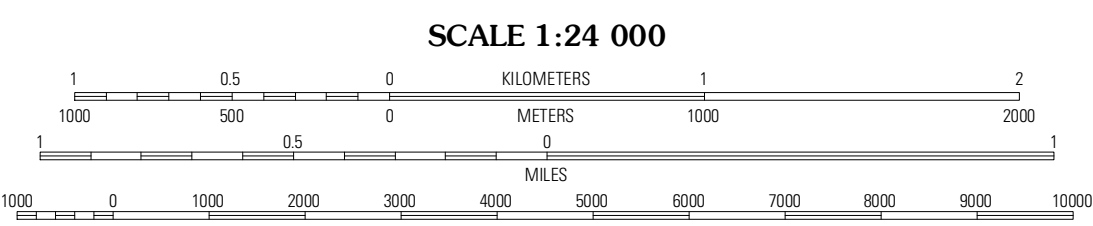
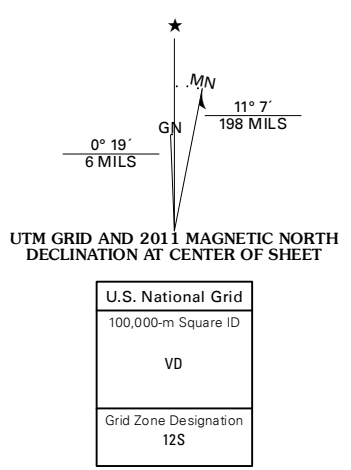


LOWER LAKE MARY QUADRANGLE
ARIZONA-COCONINO CO.
7.5-MINUTE SERIES



Produced by the United States Geological Survey
North American Datum of 1983 (NAD83)
World Geodetic System of 1984 (WGS84). Projection and
1 000-foot ticks: Universal Transverse Mercator, Zone 12S
10 000-foot ticks: Arizona Coordinate System of 1983
(central zone)

Imagery:.....NAIP, June 2010 - July 2010
Roads:.....©2006-2011 TomTom
Roads within US Forest Service Lands:.....FSTopo Data
with limited Forest Service updates, 2009
Names:.....GNIS, 2011
Hydrography:.....National Hydrography Dataset, 2010
Contours:.....National Elevation Dataset, 2000
Boundaries:.....Census, IBWC, IBC, USGS, 1972 - 2010



CONTOUR INTERVAL 20 FEET
NORTH AMERICAN VERTICAL DATUM OF 1988

This map was produced to conform with the
National Geospatial Program US Topo Product Standard, 2011.
A metadata file associated with this product is draft version 0.6.1



QUADRANGLE LOCATION

Flagstaff West	Flagstaff East	Winoona
Mountainaire	Lower Lake Mary	Abhurst Lake
Munds Park	Mormon Mountain	Mormon Lake

ADJOINING 7.5 QUADRANGLES

ROAD CLASSIFICATION

Interstate Route State Route
 US Route Local Road
 Ramp 4WD

Interstate Route FS Primary Route
 FS Passenger Route FS High Clearance Route

Check with local Forest Service unit
for current travel conditions and restrictions.

LOWER LAKE MARY, AZ
2011