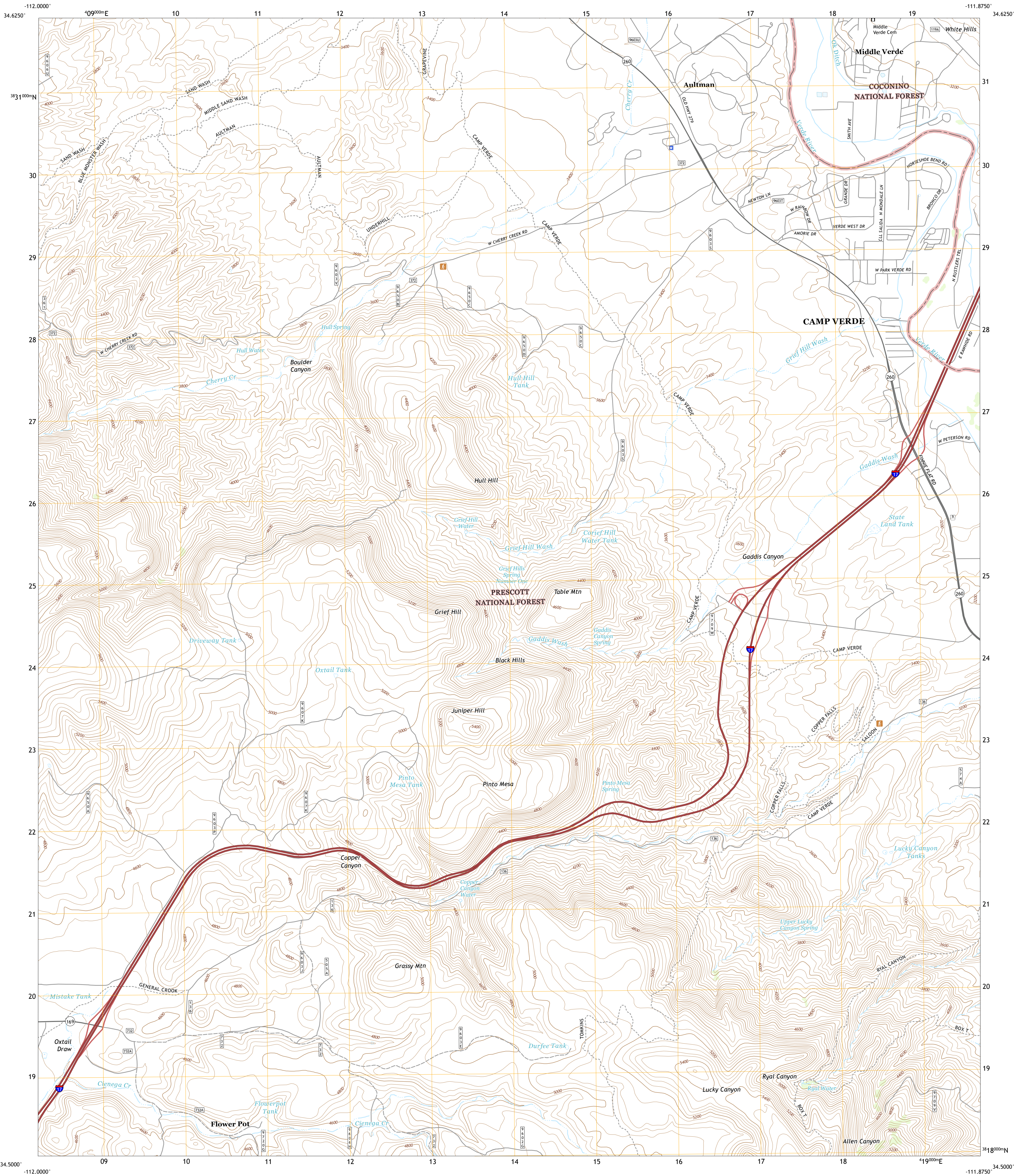




U.S. DEPARTMENT OF THE INTERIOR
U.S. GEOLOGICAL SURVEY

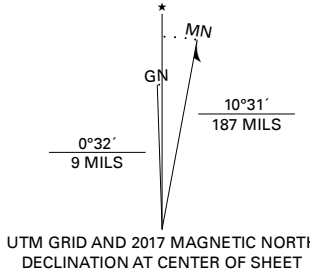


MIDDLE VERDE QUADRANGLE
ARIZONA - YAVAPI COUNTY
7.5-MINUTE SERIES



Produced by the United States Geological Survey
North American Datum of 1983 (NAD83)
World Geodetic System of 1984 (WGS84). Projection and
1 000-meter grid/Universal Transverse Mercator, Zone 12S
This map is not a legal document. Boundaries may be
generalized for this map scale. Private lands within government
reservations may not be shown. Obtain permission before
entering private lands.

Imagery.....NAIP, June 2015 - August 2015
Roads.....U.S. Census Bureau, 2014
Data within US Forest Service Lands.....FS Topo
Data with Limited Forest Service updates, 2014 - 2018
Names.....GNS, 1980
Hydrography.....National Hydrography Dataset, 2005 - 2018
Contours.....National Elevation Dataset, 2001 - 2003
Boundaries.....Multiple sources: see metadata file 2016
Public Land Survey System.....BLM, 2017
Wetlands.....FWS National Wetlands Inventory 1980 - 1981



1	2	3
4	5	6
7	8	9

ADJOINING QUADRANGLES

1 Cottonwood
2 Cornville
3 Lake Montezuma
4 Cherry
5 Camp Verde
6 Estler Peak
7 Arnold Mesa
8 Horner Mountain

ROAD CLASSIFICATION	
Expressway	Local Connector
Secondary Hwy	Local Road
Ramp	4WD
Interstate Route	US Route
FS Primary Route	FS Passenger Route
	FS High Clearance Route
	State Route

Check with local Forest Service unit
for current travel conditions and restrictions.

MIDDLE VERDE, AZ
2018



NSN 1643016354593
NGA REF NO. USGSX24K29094