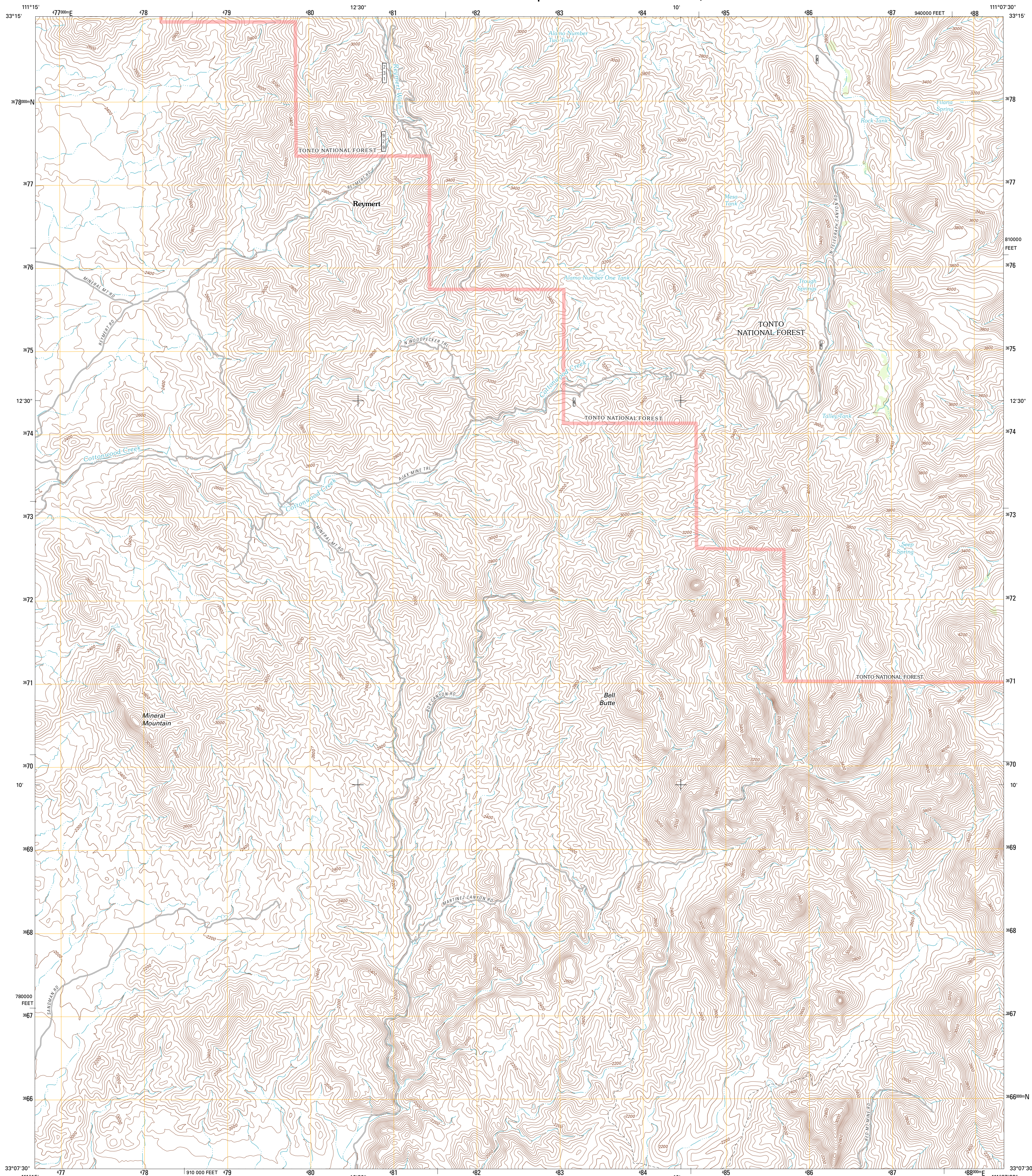




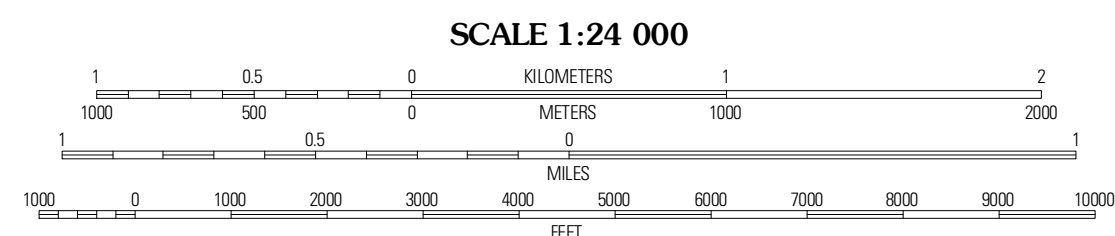
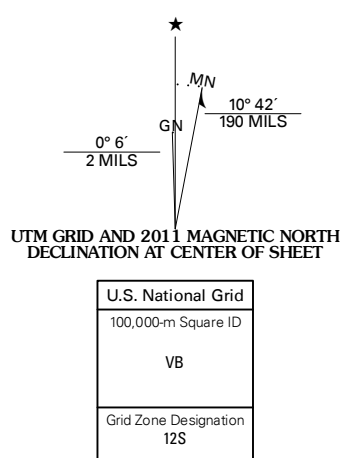
U.S. DEPARTMENT OF THE INTERIOR
U. S. GEOLOGICAL SURVEY



MINERAL MOUNTAIN QUADRANGLE
ARIZONA-PINAL CO.
7.5-MINUTE SERIES



Produced by the United States Geological Survey
North American Datum of 1983 (NAD83)
World Geodetic System of 1984 (WGS84), Projection and
1 000-meter grid: Universal Transverse Mercator, Zone 12S
10 000-foot ticks: Arizona Coordinate System of 1983
(central zone)



CONTOUR INTERVAL 40 FEET
NORTH AMERICAN VERTICAL DATUM OF 1988

This map was produced to conform with the
National Geospatial Program US Topo Product Standard, 2011.
A metadata file associated with this product is draft version 0.6.1



QUADRANGLE LOCATION

| | | |
|-------------------|---------------------|-----------------|
| Florence Junction | Picketpost Mountain | Superior |
| Florence NE | Mineral Mountain | Teapot Mountain |
| Florence SE | North Butte | Grayback |

ADJOINING 7.5 QUADRANGLES

ROAD CLASSIFICATION

Interstate Route State Route

US Route Local Road

Ramp 4WD

Interstate Route US Route

FS Primary Route US Route

FS Passenger Route FS High Clearance Route

Check with local Forest Service unit
for current travel conditions and restrictions.

Imagery: NADP, August 2010
Roads: 2006-2011 TomTom
Roads within US Forest Service Lands: FS Topo Data
with limited Forest Service updates, 2009
Names: GNS, 2011
Hydrography: National Hydrography Dataset, 2007
Contours: National Elevation Dataset, 2003
Boundaries: Census, IBWC, IBC, USGS, 1972 - 2010

MINERAL MOUNTAIN, AZ
2011