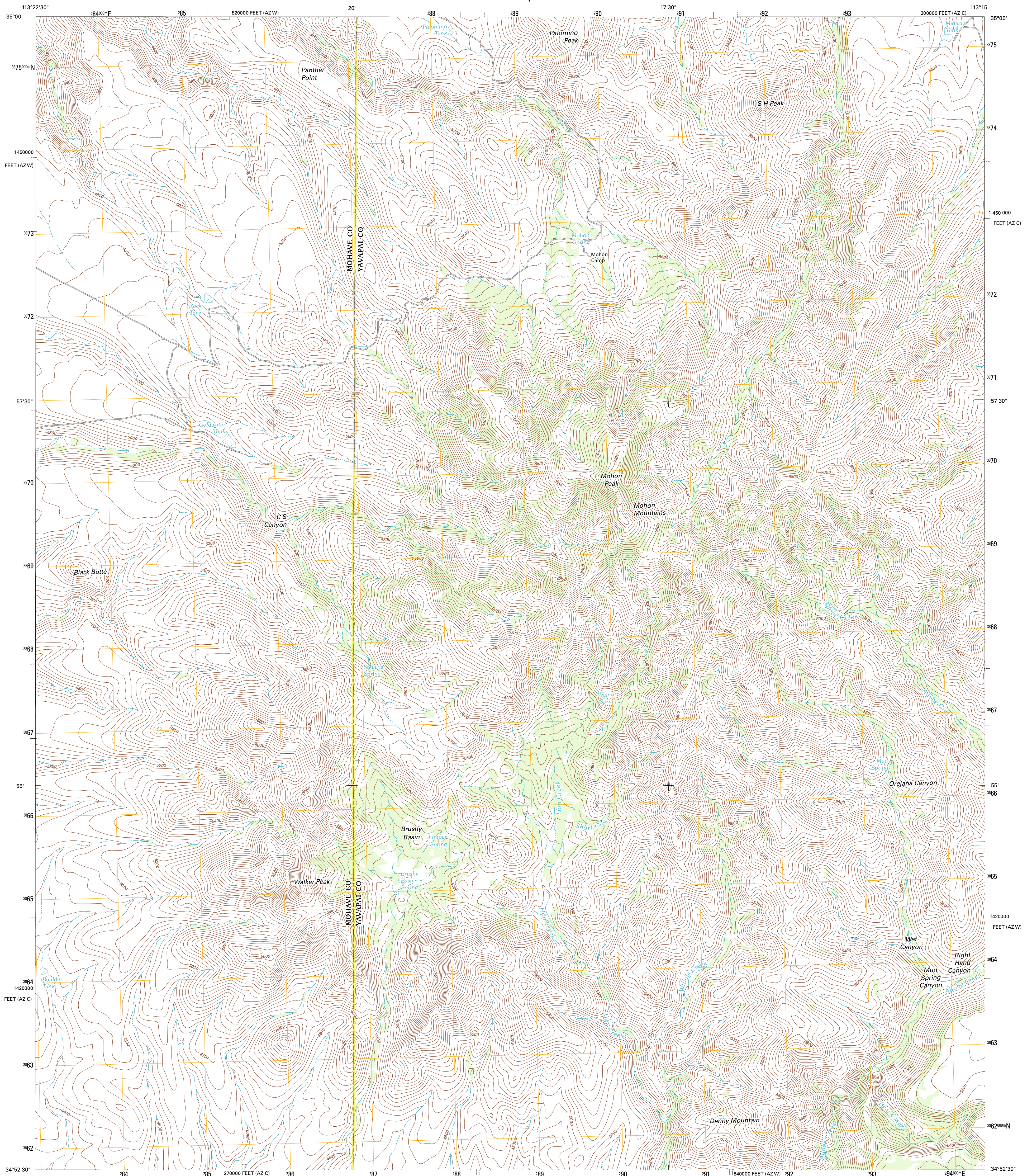




U.S. DEPARTMENT OF THE INTERIOR
U. S. GEOLOGICAL SURVEY



MOHON PEAK QUADRANGLE
ARIZONA
7.5-MINUTE SERIES

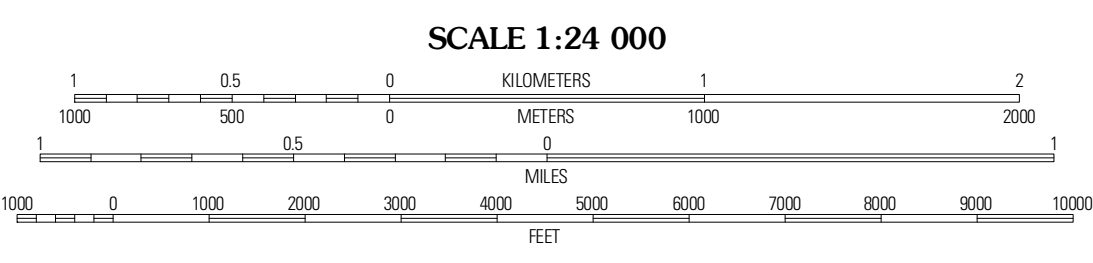


Produced by the United States Geological Survey
North American Datum of 1983 (NAD83)
World Geodetic System of 1984 (WGS84). Projection and
1 000-meter grid: Universal Transverse Mercator, Zone 12S
10 000-foot ticks: Arizona Coordinate System of 1983
(central and west zones)

UTM GRID AND 2011 MAGNETIC NORTH DECLINATION AT CENTER OF SHEET

11° 18' 24" N
11° 38' 20" N

U.S. National Grid
100,000m Square ID
TD
Grid Zone Designation
12S



CONTOUR INTERVAL 40 FEET
NORTH AMERICAN VERTICAL DATUM OF 1988

This map was produced to conform with the
National Geospatial Program US Topo Product Standard, 2011.
A metadata file associated with this product is draft version 0.6.1



ROAD CLASSIFICATION

Interstate Route (thick red line)
US Route (red line)
Ramp (red line with blue triangle)

State Route (thin red line)
Local Road (grey line)
4WD (dashed grey line)

QUADRANGLE LOCATION

Penitentiary Mountain	Devils Hump	Andl Rock Ranch
Gonzales Wash	Mohon Peak	Sunrise Peak
Cedar Basin	Pilot Knob	Burro Mesa

MOHON PEAK, AZ
2011

ADJOINING 7.5 QUADRANGLES