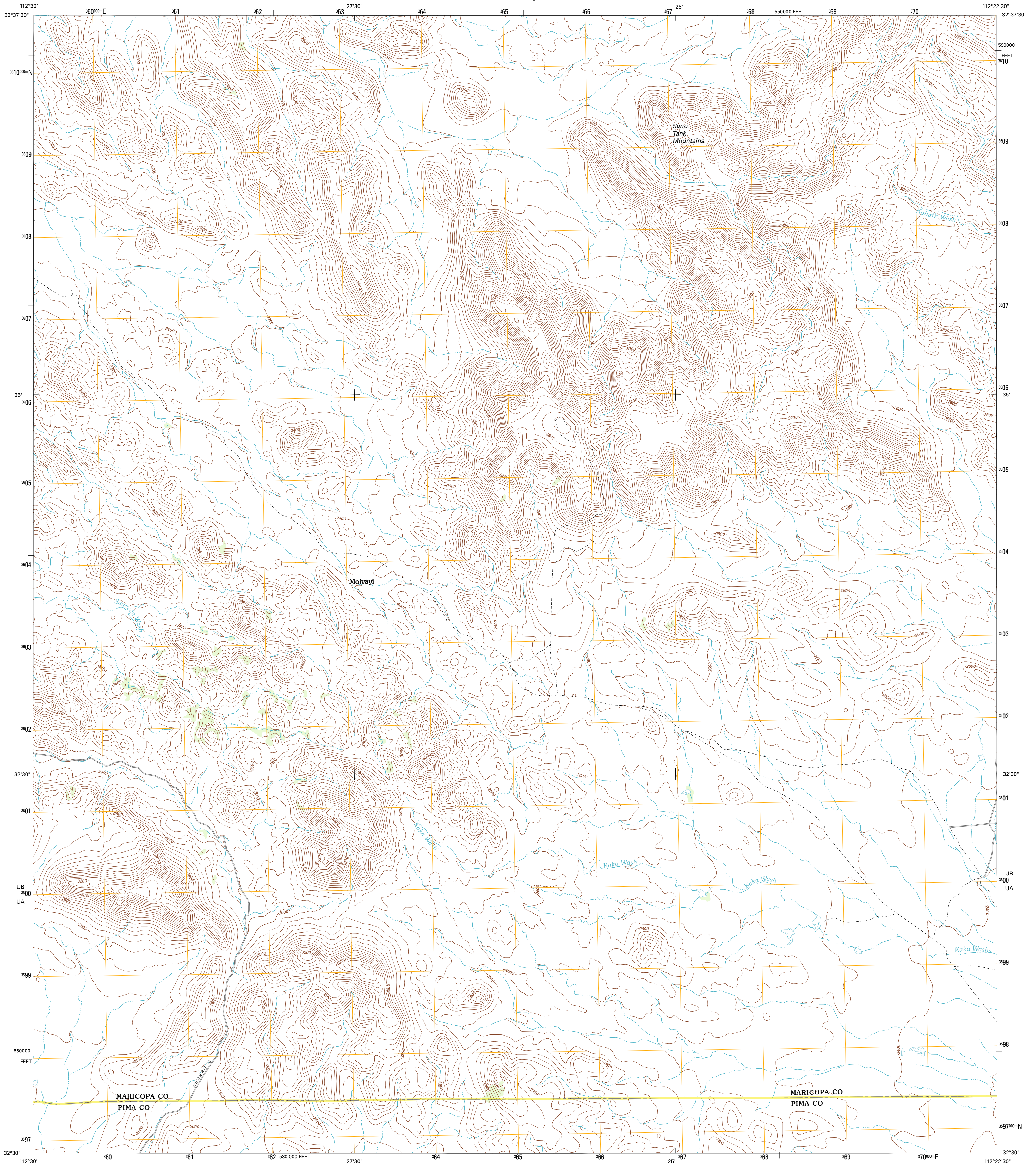




U.S. DEPARTMENT OF THE INTERIOR
U. S. GEOLOGICAL SURVEY

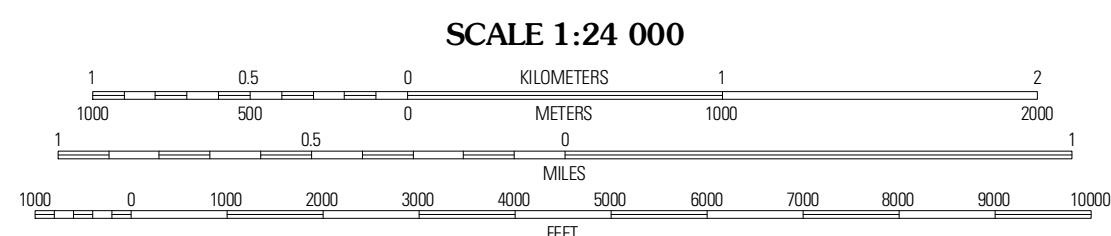
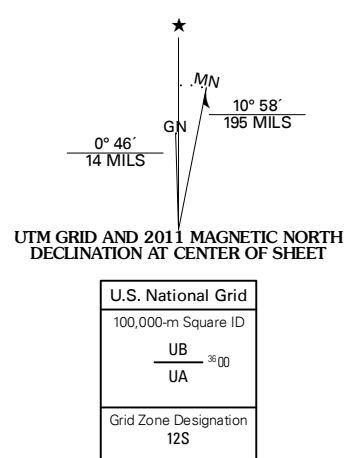


MOIVAYI QUADRANGLE
ARIZONA
7.5-MINUTE SERIES



Produced by the United States Geological Survey
North American Datum of 1983 (NAD83)
World Geodetic System of 1984 (WGS84). Projection and
1 000-meter grid: Universal Transverse Mercator, Zone 12S
Contours.....National Elevation Dataset, 2003
(central zone)

Imagery.....NAIP, June 2010
Roads.....©2006-2011 TomTom
Names.....GNIS, 2011
Hydrography.....National Hydrography Dataset, 2007
Contours.....National Elevation Dataset, 2003
Boundaries.....Census, IBWC, BC, USGS, 1972 - 2010



CONTOUR INTERVAL 40 FEET
NORTH AMERICAN VERTICAL DATUM OF 1988

This map was produced to conform with the
National Geospatial Program US Topo Product Standard, 2011.
A metadata file associated with this product is draft version 0.6.1

ROAD CLASSIFICATION

- Interstate Route (Red line with blue shield)
- US Route (Red line)
- Ramp (Red line with blue shield)
- State Route (Black line)
- Local Road (Black line)
- 4WD (Black line with cross-hatch)

QUADRANGLE LOCATION

Platt Well	Kaka NW	Johnson Well
Tom Thumb	Moivayi	Kaka
Colfeepot Mountain	Cimarron Peak	West of Ventana

ADJOINING 7.5 QUADRANGLES

MOIVAYI, AZ
2011