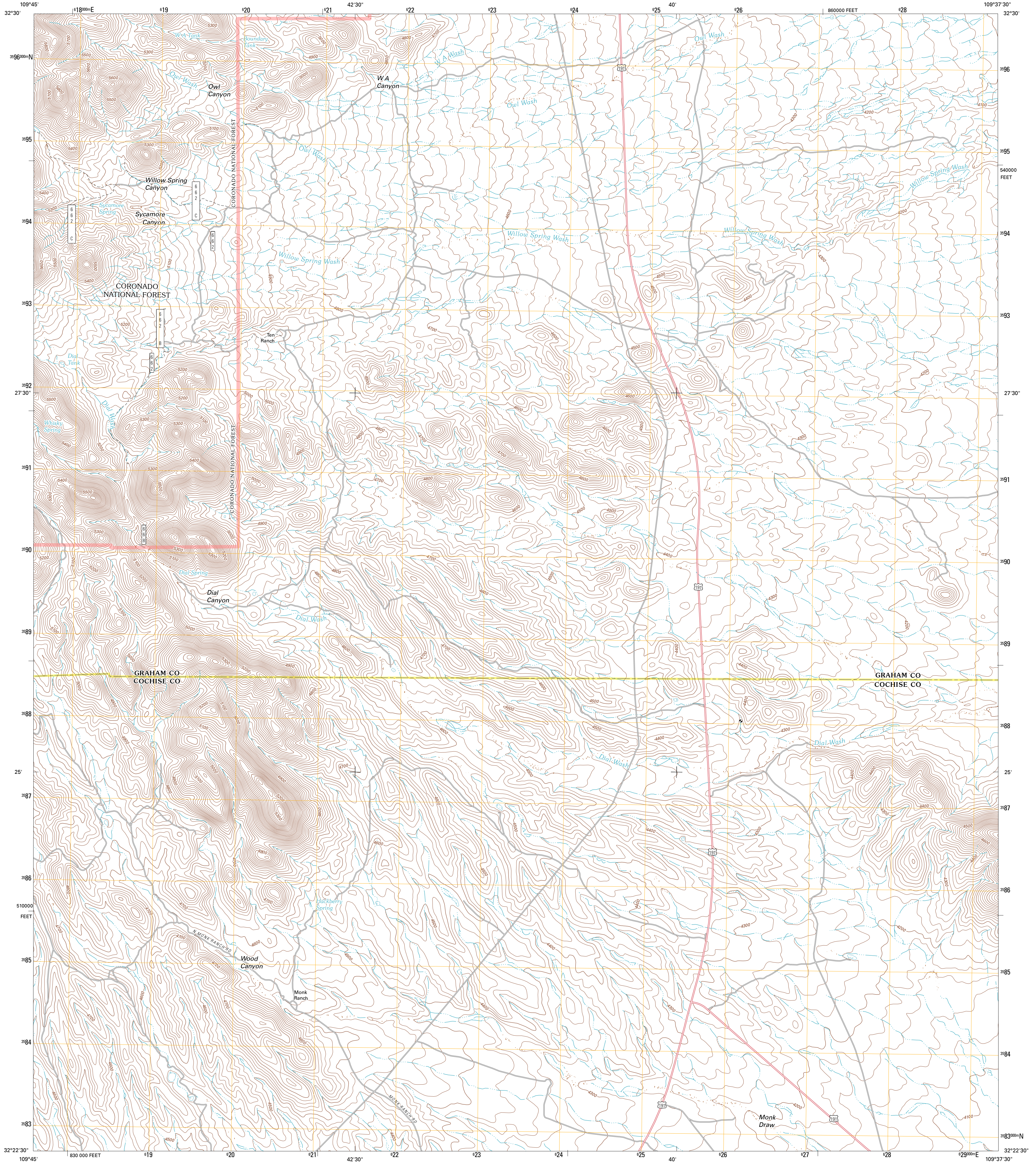




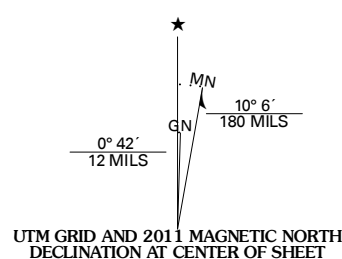
U.S. DEPARTMENT OF THE INTERIOR  
U. S. GEOLOGICAL SURVEY



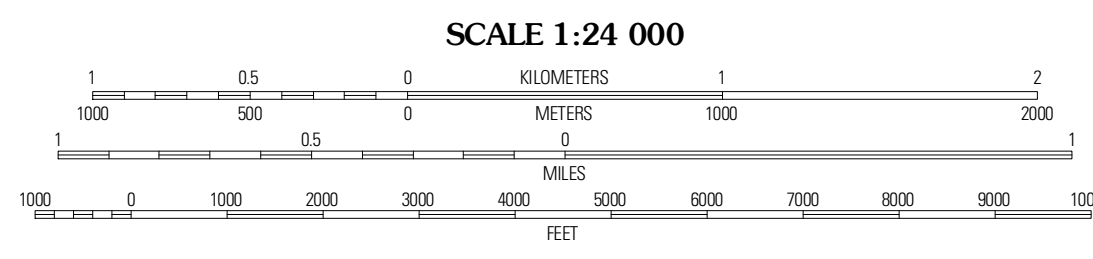
MONK DRAW QUADRANGLE  
ARIZONA  
7.5-MINUTE SERIES



Produced by the United States Geological Survey  
North American Datum of 1983 (NAD83)  
World Geodetic System of 1984 (WGS84), Projection and  
1 000-meter grid: Universal Transverse Mercator, Zone 12S  
10 000-foot ticks: Arizona Coordinate System of 1983 (east  
zone)



U.S. National Grid 100,000-m Square ID	XA
Grid Zone Designation	12S



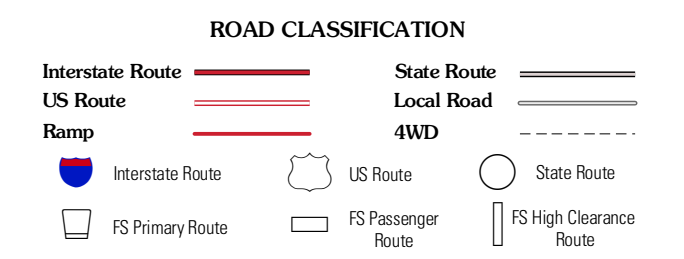
CONTOUR INTERVAL 20 FEET  
NORTH AMERICAN VERTICAL DATUM OF 1988

This map was produced to conform with the  
National Geospatial Program US Topo Product Standard, 2011.  
A metadata file associated with this product is draft version 0.6.1



QUADRANGLE LOCATION

Stockton Pass	Gilispie Mountain	Tanque
Greasewood Mountain	Monk Draw	Fisher Hills
Wilcox North	Railroad Pass	Luzena



Check with local Forest Service unit  
for current travel conditions and restrictions.

MONK DRAW, AZ  
2011

ADJOINING 7.5 QUADRANGLES