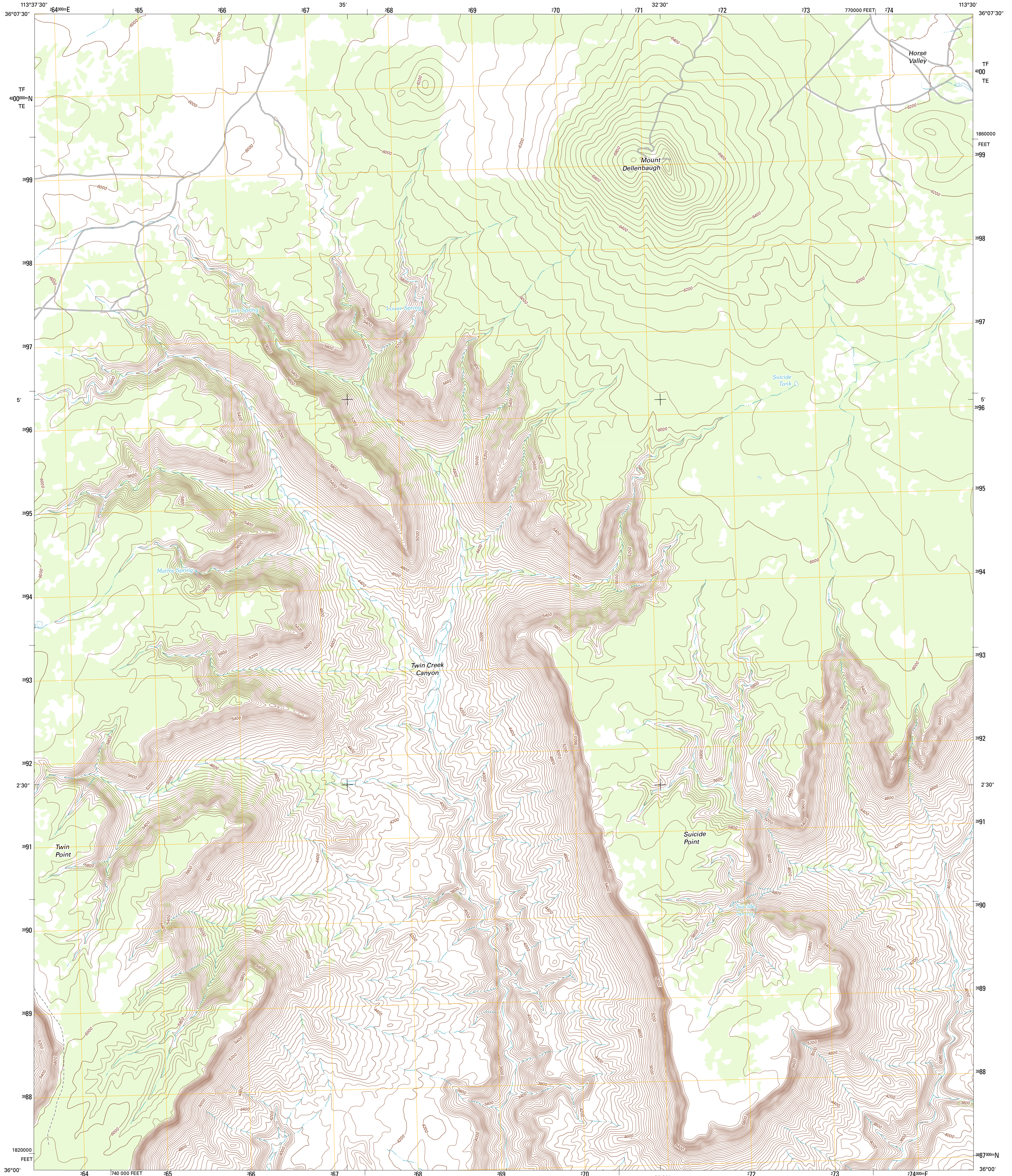




U.S. DEPARTMENT OF THE INTERIOR
U. S. GEOLOGICAL SURVEY

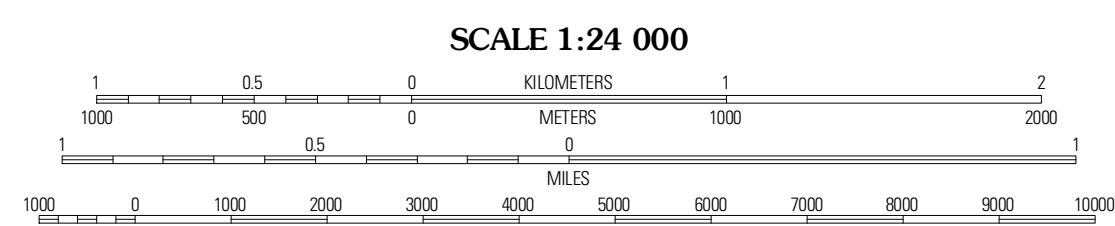
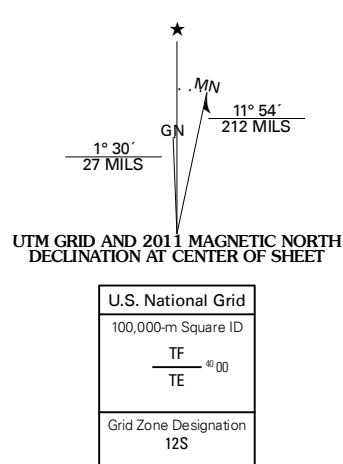


MOUNT DELLENBAUGH QUADRANGLE
ARIZONA-MOHAVE CO.
7.5-MINUTE SERIES



Produced by the United States Geological Survey
North American Datum of 1983 (NAD83)
World Geodetic System of 1984 (WGS84). Projection and
1 000-meter grid: Universal Transverse Mercator, Zone 12S
10 000-foot ticks: Arizona Coordinate System of 1983 (west
zone)

Imagery.....NAIP, June 2010
Roads.....©2006-2011 TomTom
Names.....GNIS, 2011
Hydrography.....National Hydrography Dataset, 2007
Contours.....National Elevation Dataset, 2000
Boundaries.....Census, IBWC, IBC, USGS, 1972 - 2010



CONTOUR INTERVAL 40 FEET
NORTH AMERICAN VERTICAL DATUM OF 1988

This map was produced to conform with the
National Geospatial Program US Topo Product Standard, 2011.
A metadata file associated with this product is draft version 0.6.1



QUADRANGLE LOCATION

Soap Dove	Castle Peak	Yellow John Mountain
Tincanbills Point	Mount Dellenbaugh	Whitmore Point SW
Devils Slide Rapids	Amos Point	Price Point

ADJOINING 7.5' QUADRANGLES

ROAD CLASSIFICATION

Interstate Route (thick red line)
US Route (red line)
Ramp (red line with blue triangle)
State Route (thin red line)
Local Road (black line)
4WD (dashed black line)
Interstate Route (blue circle with red line)
US Route (white circle with red line)
State Route (white circle with black line)

MOUNT DELLENBAUGH, AZ
2011