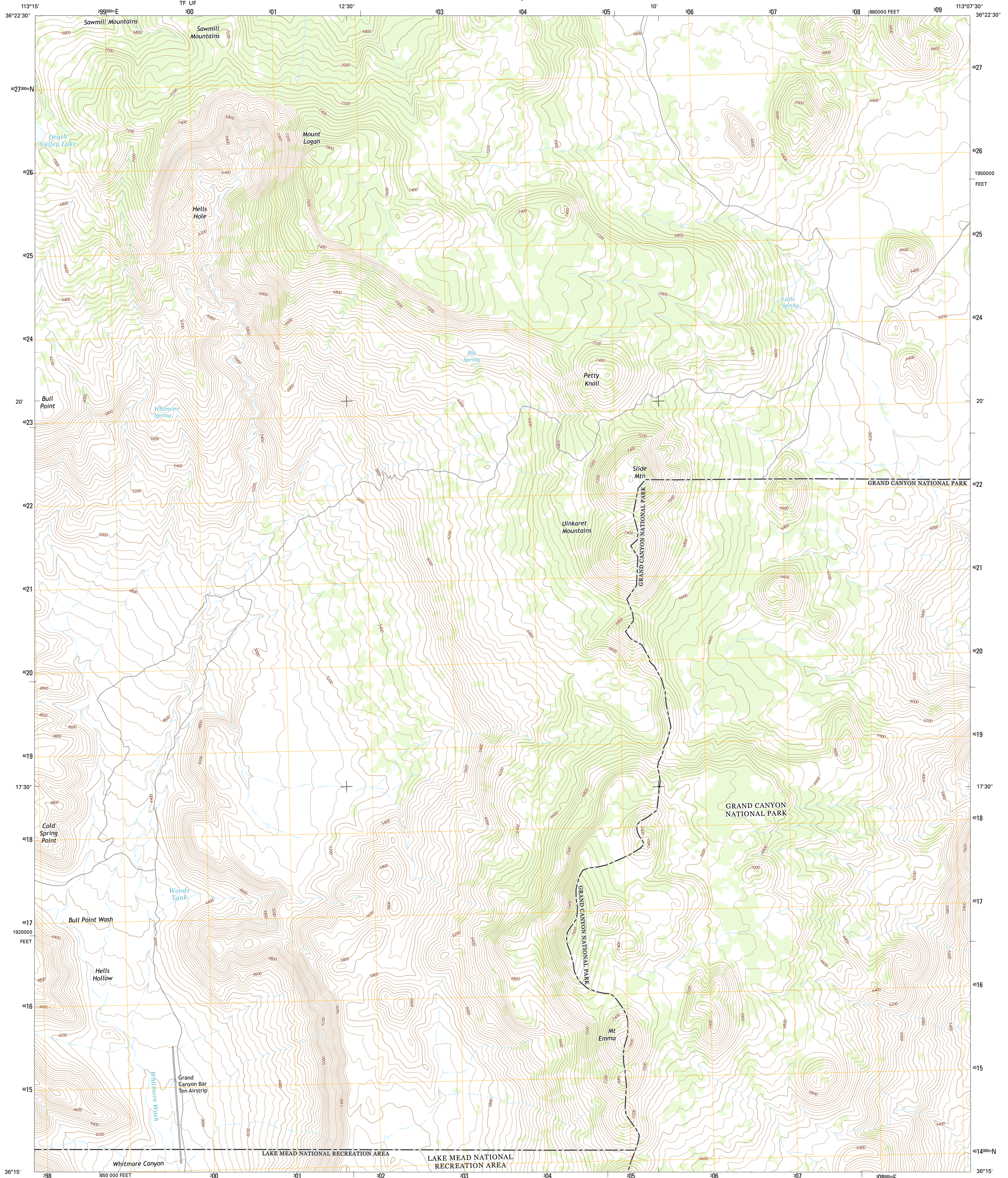




U.S. DEPARTMENT OF THE INTERIOR  
U.S. GEOLOGICAL SURVEY



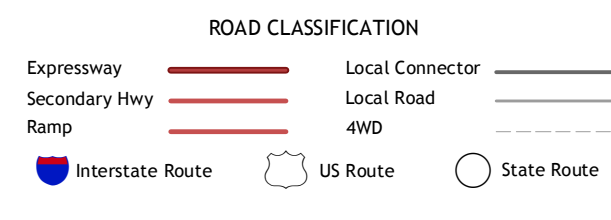
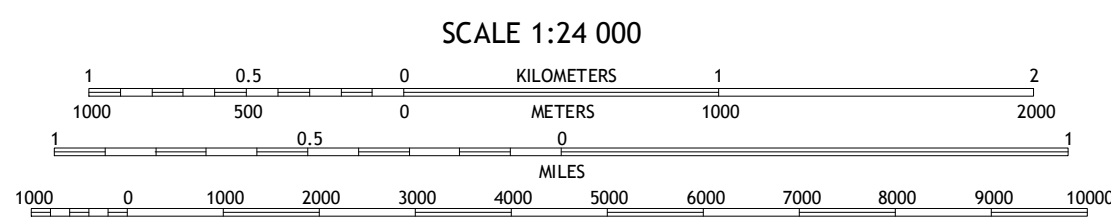
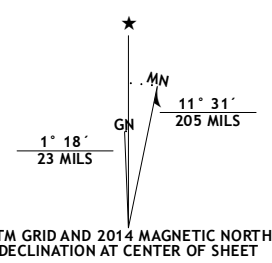
MOUNT LOGAN QUADRANGLE  
ARIZONA-MOHAVE CO.  
7.5-MINUTE SERIES



Produced by the United States Geological Survey  
North American Datum of 1983 (NAD83)  
World Geodetic System of 1984 (WGS84). Projection and  
1 000-meter grid: Universal Transverse Mercator, Zone 12S  
10 000-foot ticks: Arizona Coordinate System of 1983 (west  
zone)

This map is not a legal document. Boundaries may be  
generalized for this map scale. Private lands within government  
reservations may not be shown. Obtain permission before  
entering private lands.

Imagery.....NAIP, June 2013  
Roads.....HERE, ©2013  
Names.....GNIS, 2013  
Hydrography.....National Hydrography Dataset, 2013  
Contours.....National Elevation Dataset, 2000  
Boundaries.....Multiple sources; see metadata file 1972 - 2014  
Public Land Survey System.....BLM, 2011



1	2	3
4	5	6
7	8	

ADJOINING QUADRANGLES

- 1 Jones Hill
- 2 Mount Trumbull
- 3 Mount Trumbull NE
- 4 Cold Spring
- 5 Mount Trumbull SE
- 6 Whitmore Point
- 7 Whitmore Rapids
- 8 Vulcans Throne

MOUNT LOGAN, AZ  
2014

