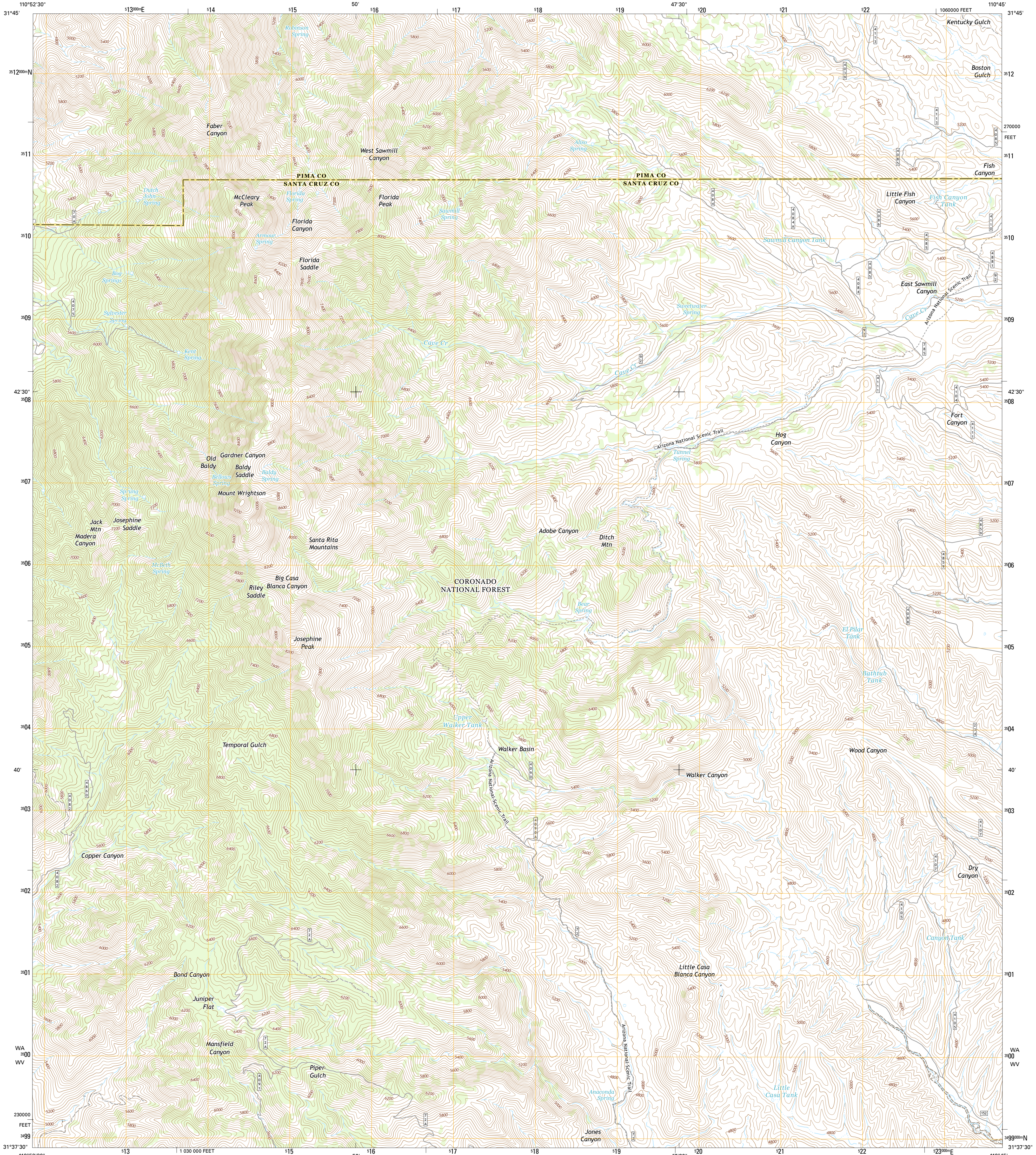




U.S. DEPARTMENT OF THE INTERIOR
U.S. GEOLOGICAL SURVEY



MOUNT WRIGHTSON QUADRANGLE
ARIZONA
7.5-MINUTE SERIES

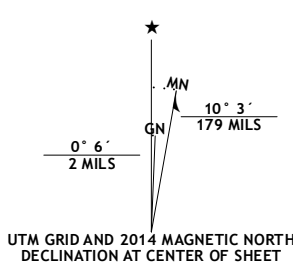


Produced by the United States Geological Survey

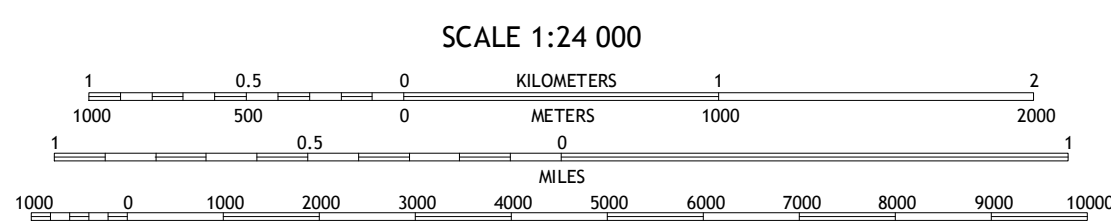
North American Datum of 1983 (NAD83)
World Geodetic System of 1984 (WGS84). Projection and
1 000-meter grid: Universal Transverse Mercator, Zone 12R
10 000-foot ticks: Arizona Coordinate System of 1983 (central
zone)

This map is not a legal document. Boundaries may be
generalized for this map scale. Private lands within government
reservations may not be shown. Obtain permission before
entering private lands.

Imagery.....NAIP, June 2013
Roads within US Forest Service Lands.....HERE, ©2013
Roads.....FS Topo Data
with limited Forest Service updates, 2013
Names.....GNIS, 2013
Hydrography.....National Hydrography Dataset, 2013
Contours.....National Elevation Dataset, 2003
Boundaries.....Multiple sources; see metadata file 1972 - 2014
Public Land Survey System.....BLM, 2011



U.S. National Grid	
100,000-m Square ID	
WA	700
WV	700
Grid Zone Designation 12R	



CONTOUR INTERVAL 40 FEET
NORTH AMERICAN VERTICAL DATUM OF 1988

This map was produced to conform with the
National Geospatial Program US Topo Product Standard, 2011.
A metadata file associated with this product is draft version 0.6.16



ROAD CLASSIFICATION

Expressway	Local Connector
Secondary Hwy	Local Road
Ramp	4WD
Interstate Route	US Route
FS Primary Route	FS Passenger Route
	FS High
	Clearance Route

Check with local Forest Service unit
for current travel conditions and restrictions.

1	2	3	1 Green Valley
4	5	6	2 Helveta
7	8	7	3 Empire Ranch
		8	4 Mount Hopkins
			5 Sonita
			6 San Cayetano Mountains
			7 Patagonia
			8 Mount Hughes

ADJOINING QUADRANGLES

MOUNT WRIGHTSON, AZ
2014

