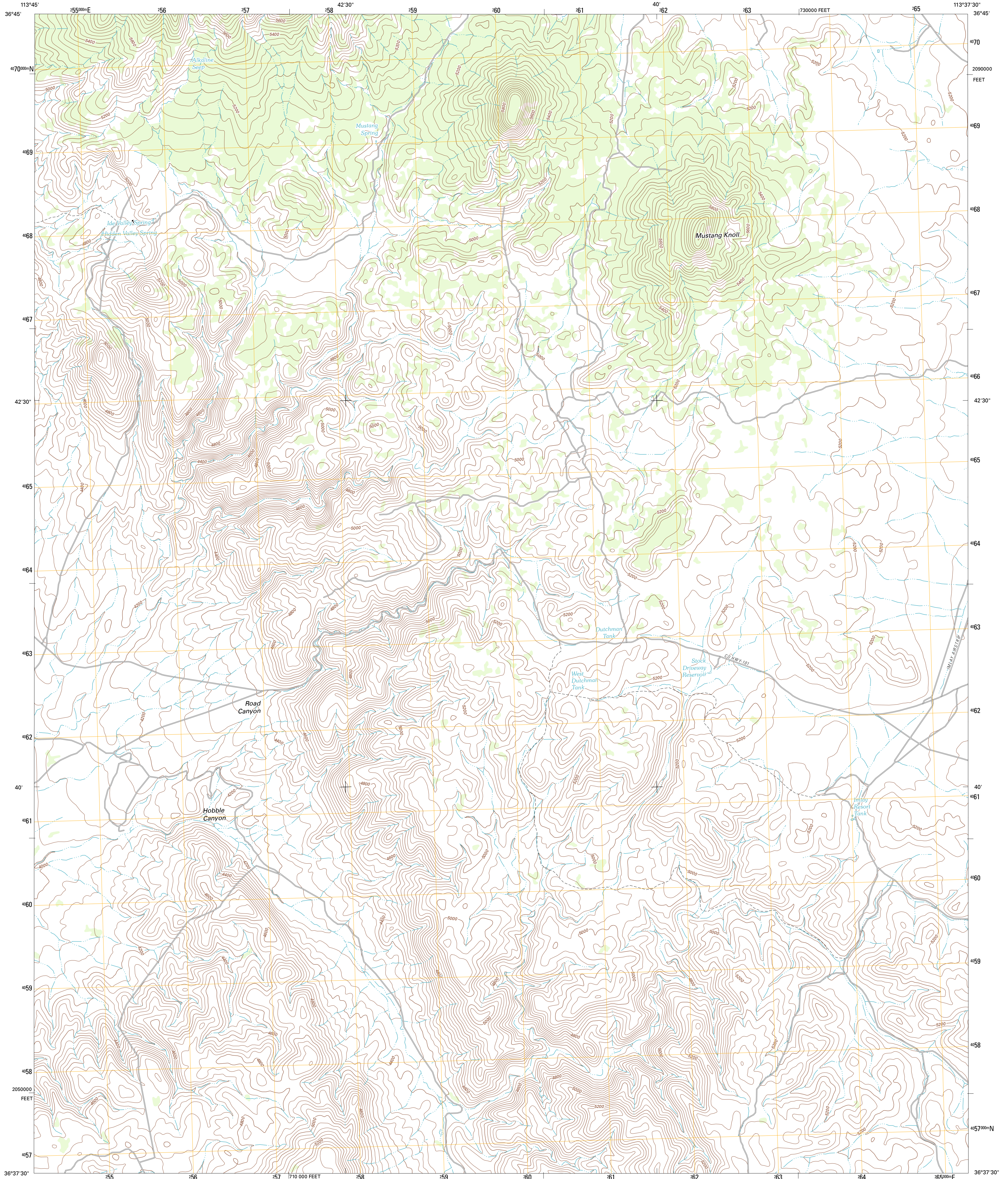




U.S. DEPARTMENT OF THE INTERIOR
U. S. GEOLOGICAL SURVEY

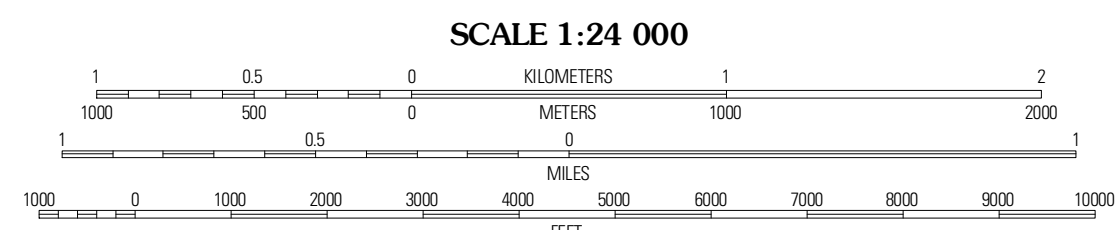
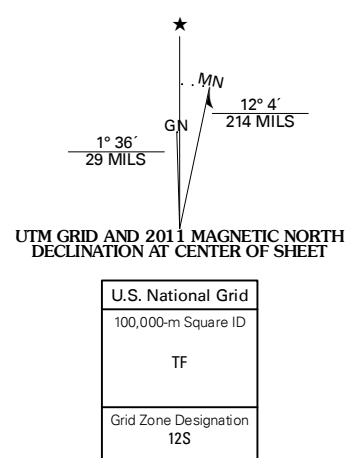


MUSTANG KNOLL QUADRANGLE
ARIZONA-MOHAVE CO.
7.5-MINUTE SERIES

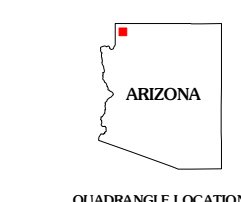


Produced by the United States Geological Survey
North American Datum of 1983 (NAD83)
World Geodetic System of 1984 (WGS84) Projection and
1 000-meter grid; Universal Transverse Mercator, Zone 12S
10 000-foot ticks; Arizona Coordinate System of 1983 (west zone)

Imagery.....NAIP, June 2010
Roads.....©2006-2011 Terra
Names.....GNIS, 2011
Hydrography.....National Hydrography Dataset, 2007
Contours.....National Elevation Dataset, 2000
Boundaries.....Census, IBWC, IBC, USGS, 1972 - 2010

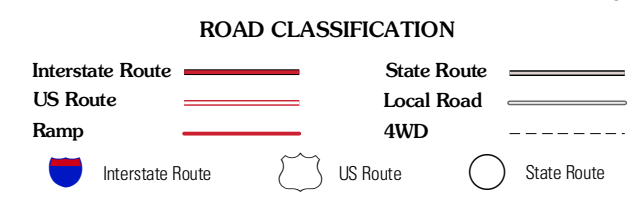


CONTOUR INTERVAL 40 FEET
NORTH AMERICAN VERTICAL DATUM OF 1988
This map was produced to conform with the
National Geospatial Program US Topo Product Standard, 2011.
A metadata file associated with this product is draft version 0.6.1



QUADRANGLE LOCATION

Mount Bargas	Wolf Hole Mountain West	Wolf Hole Mountain East
Cane Springs	Mustang Knoll	Sullivan Draw North
Cane Springs SE	Saint George Canyon	Sullivan Draw South



MUSTANG KNOLL, AZ
2011