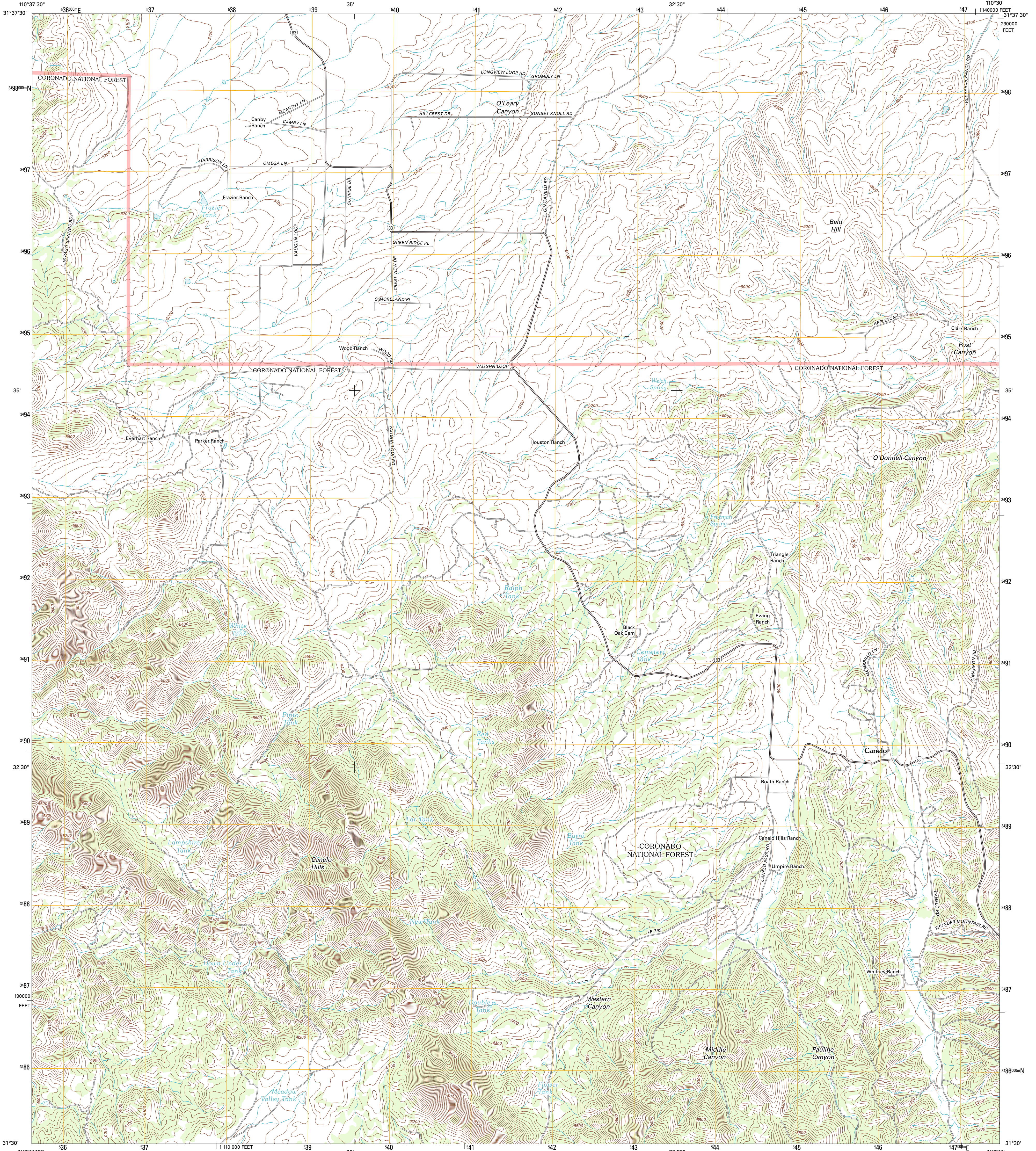




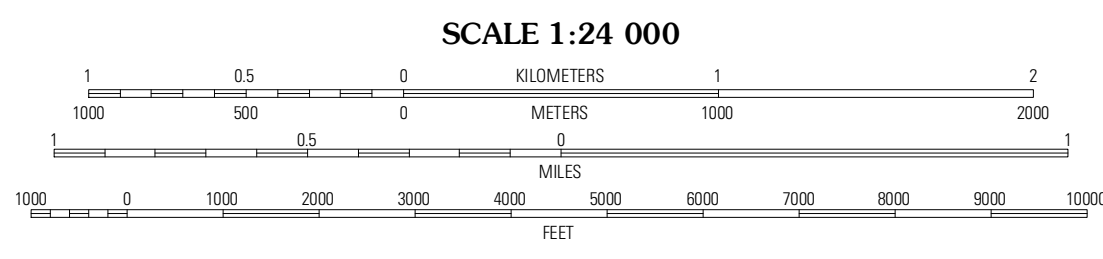
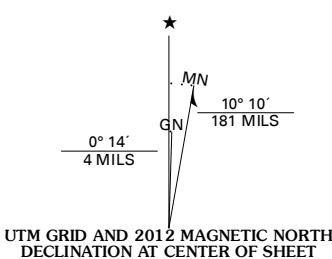
U.S. DEPARTMENT OF THE INTERIOR
U. S. GEOLOGICAL SURVEY



O'DONNELL CANYON QUADRANGLE
ARIZONA-SANTA CRUZ CO.
7.5-MINUTE SERIES



Produced by the United States Geological Survey
North American Datum of 1983 (NAD83)
World Geodetic System of 1984 (WGS84) Projection and
1 000-meter grid: Universal Transverse Mercator, Zone 12R
10 000-foot ticks: Arizona Coordinate System of 1983
(central zone)



ROAD CLASSIFICATION

- Interstate Route (thick red line)
- US Route (red line)
- Ramp (red line with arrow)
- State Route (thin red line)
- Local Road (black line)
- 4WD (dashed black line)
- FS Primary Route (black line with 'FS' label)
- FS Passenger Route (black line with 'FS' label)
- FS High Clearance Route (black line with 'FS' label)

Check with local Forest Service unit for current travel conditions and restrictions.

Imagery: NADP, June 2010
Roads: 2006-2011 TomTom
Roads within US Forest Service Lands: FSTopo Data with limited Forest Service updates, 2009
Names: GNS, 2011
Hydrography: National Hydrography Dataset, 2010
Contours: National Elevation Dataset, 2003
Boundaries: Census, IBWC, IBC, USGS, 1972 - 2010

U.S. National Grid	100,000-m Square ID
WV	
Grid Zone Designation	12R

CONTOUR INTERVAL 20 FEET
NORTH AMERICAN VERTICAL DATUM OF 1988

This map was produced to conform with the National Geospatial Program US Topo Product Standard, 2011. A metadata file associated with this product is draft version 0.6.1

QUADRANGLE LOCATION

Sonolita	Elgin	Mustang Mountains
Mount Hughes	O'Donnell Canyon	Pyeatt Ranch
Harshaw	Canelo Pass	Huachuca Peak

ADJOINING 7.5 QUADRANGLES

O'DONNELL CANYON, AZ
2012