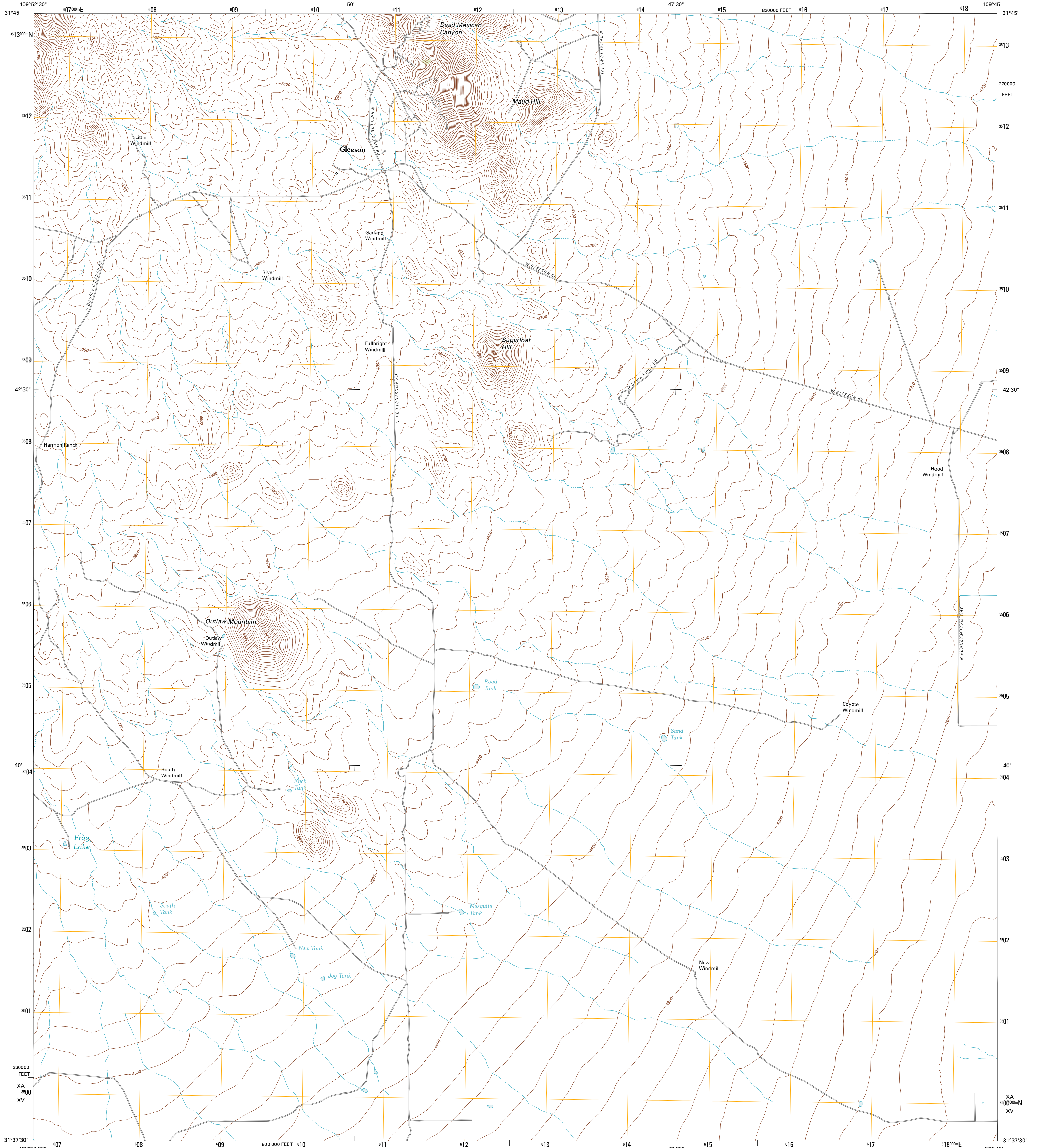




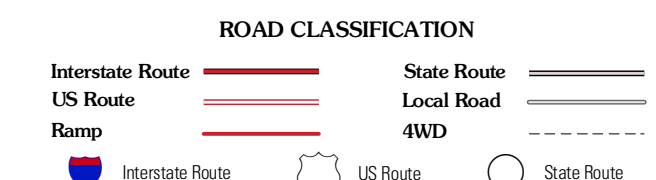
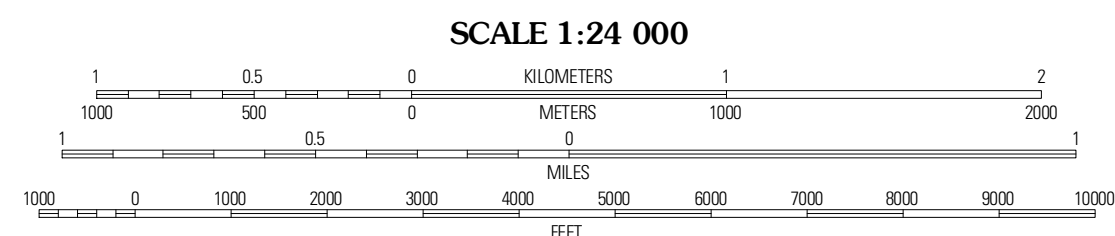
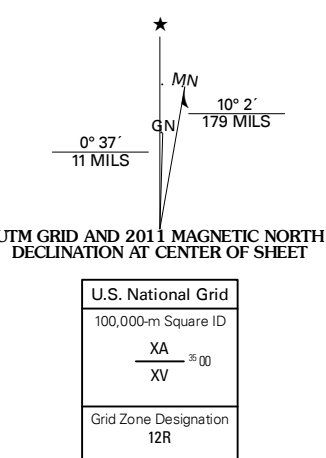
U.S. DEPARTMENT OF THE INTERIOR
U. S. GEOLOGICAL SURVEY



OUTLAW MOUNTAIN QUADRANGLE
ARIZONA-COCHISE CO.
7.5-MINUTE SERIES



Produced by the United States Geological Survey
North American Datum of 1983 (NAD83)
World Geodetic System of 1984 (WGS84). Projection and
1 000-meter grid: Universal Transverse Mercator, Zone 12R
10 000-foot ticks: Arizona Coordinate System of 1983 (east
zone)



QUADRANGLE LOCATION

Black Diamond Peak	Turquoise Mountain	Squaretop Hills West
Hay Mountain	Outlaw Mountain	Elkida
Potter Mountain	Gleeson SE	McNeal

ADJOINING 7.5 QUADRANGLES

CONTOUR INTERVAL 20 FEET
NORTH AMERICAN VERTICAL DATUM OF 1988

This map was produced to conform with the
National Geospatial Program US Topo Product Standard, 2011.
A metadata file associated with this product is draft version 0.6.1

OUTLAW MOUNTAIN, AZ
2011