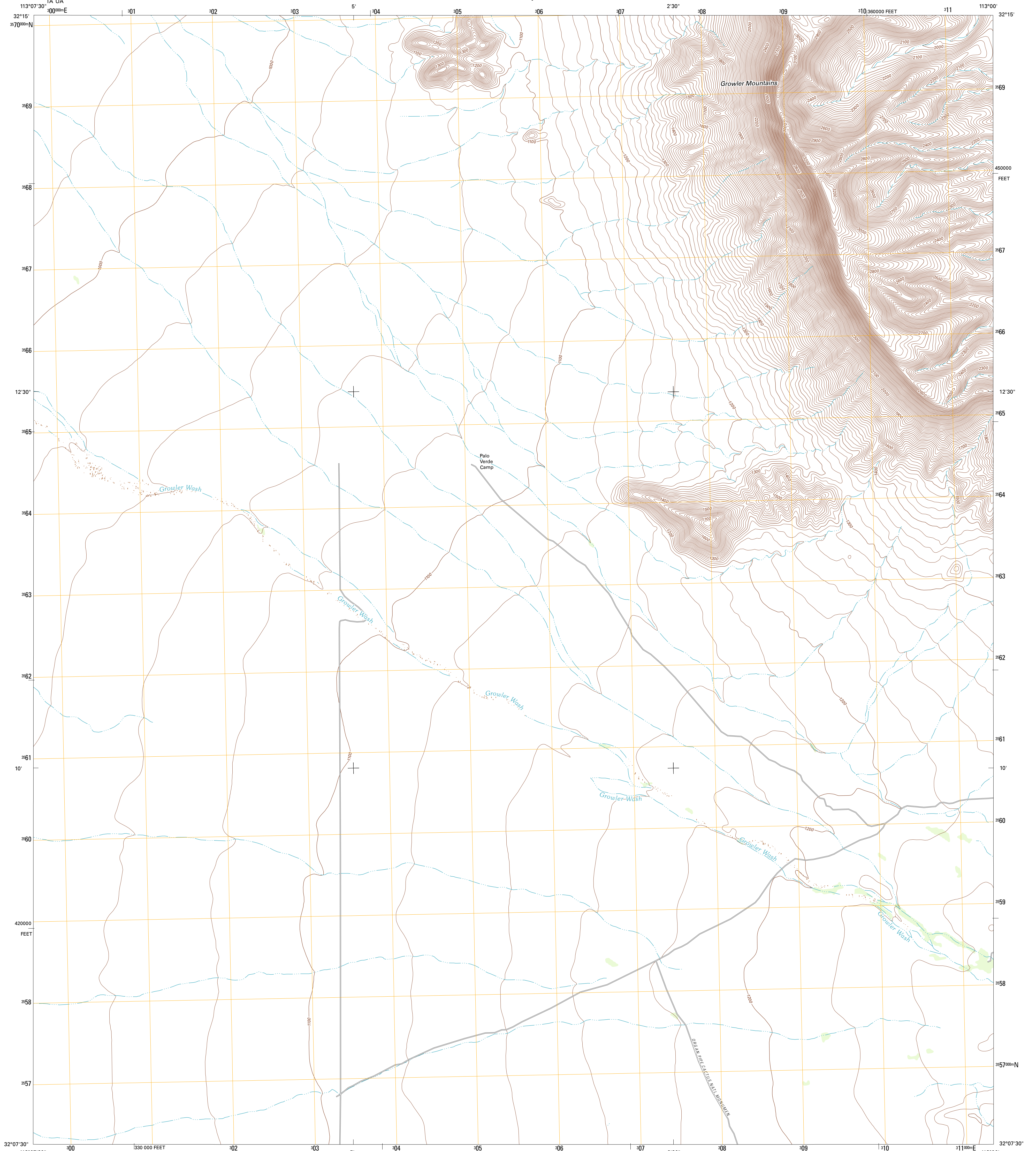




U.S. DEPARTMENT OF THE INTERIOR
U. S. GEOLOGICAL SURVEY

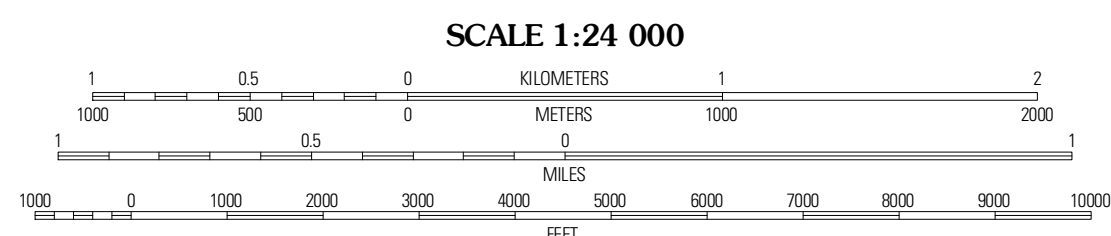
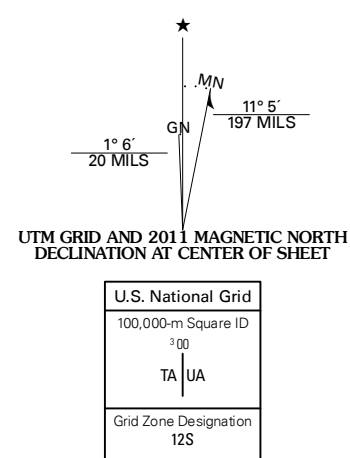


PALO VERDE CAMP QUADRANGLE
ARIZONA-PIMA CO.
7.5-MINUTE SERIES



Produced by the United States Geological Survey
North American Datum of 1983 (NAD83)
World Geodetic System of 1984 (WGS84). Projection and
1 000-meter grid: Universal Transverse Mercator, Zone 12S
Contours: National Elevation Dataset, 2003
(central zone)

Imagery: NAIP, July 2010
Roads: 2006-2011 TomTom
Names: GNS, 2011
Hydrography: National Hydrography Dataset, 2007
Contours: National Elevation Dataset, 2003
Boundaries: Census, IBWC, IBC, USGS, 1972-2010



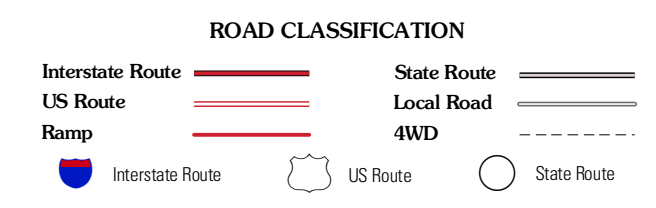
CONTOUR INTERVAL 20 FEET
NORTH AMERICAN VERTICAL DATUM OF 1988

This map was produced to conform with the
National Geospatial Program US Topo Product Standard, 2011.
A metadata file associated with this product is draft version 0.6.1



QUADRANGLE LOCATION

Saguaro Gap Well	Tempe Pass	Chico Shinarump
North of Agua Duke Mountains	Palo Verde Camp	Bates Well
Agua Duke Mountains	Pozo Nuevo Well	Rino Peak



PALO VERDE CAMP, AZ
2011

ADJOINING 7.5 QUADRANGLES