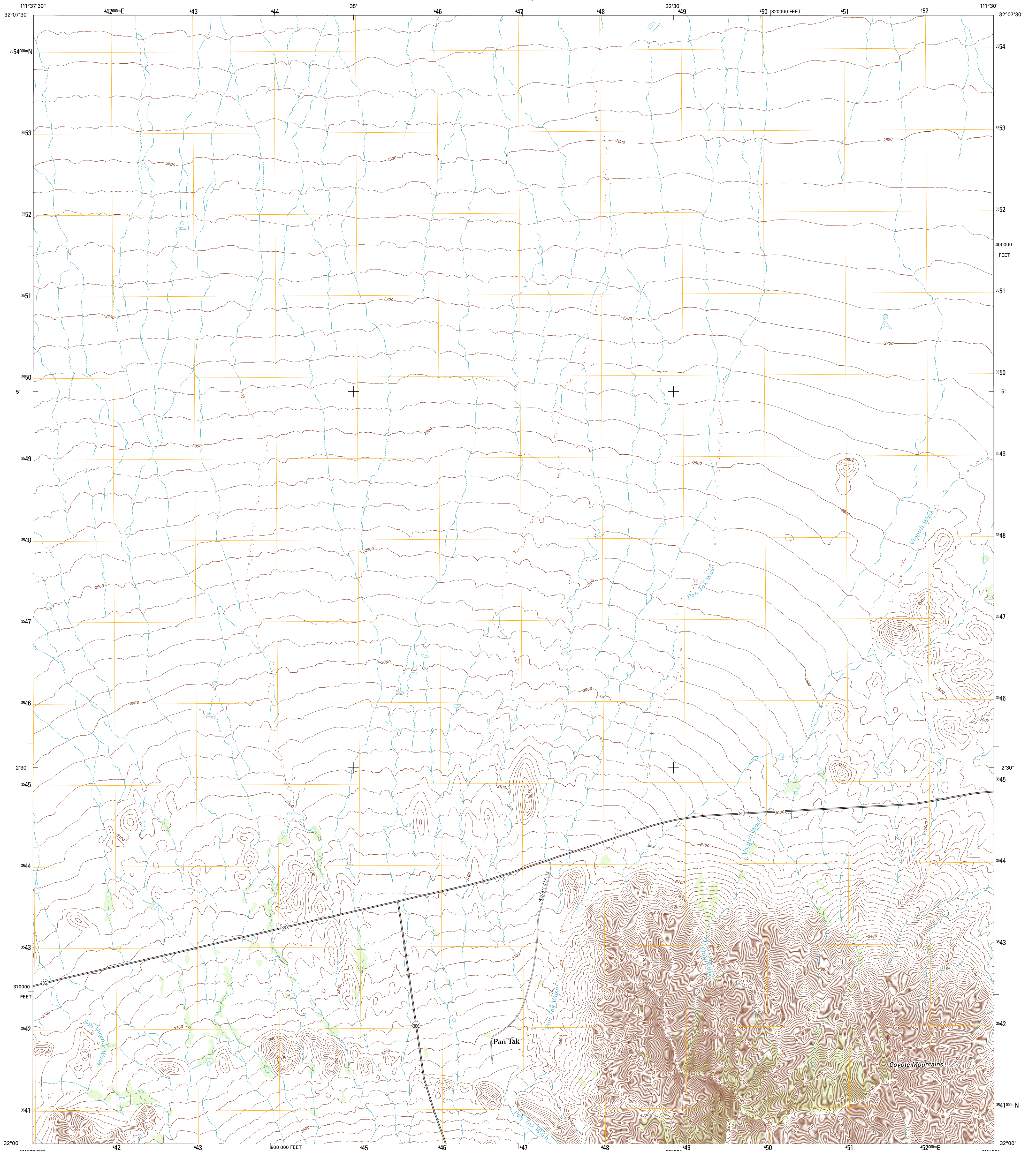




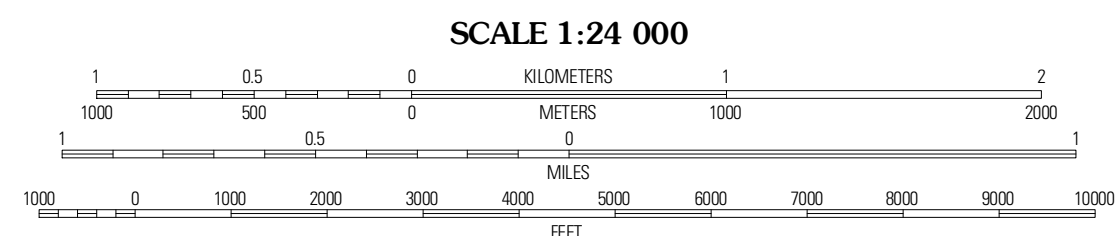
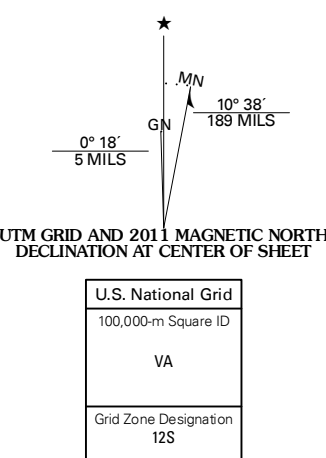
U.S. DEPARTMENT OF THE INTERIOR  
U. S. GEOLOGICAL SURVEY



PAN TAK QUADRANGLE  
ARIZONA-PIMA CO.  
7.5-MINUTE SERIES



Produced by the United States Geological Survey  
North American Datum of 1983 (NAD83)  
World Geodetic System of 1984 (WGS84) Projection and  
1 000-meter grid; Universal Transverse Mercator, Zone 12S  
10 000-foot ticks; Arizona Coordinate System of 1983  
(central zone)



SCALE 1:24 000  
CONTOUR INTERVAL 20 FEET  
NORTH AMERICAN VERTICAL DATUM OF 1988  
This map was produced to conform with the  
National Geospatial Program US Topo Product Standard, 2011.  
A metadata file associated with this product is draft version 0.6.1



**ROAD CLASSIFICATION**  
Interstate Route (thick red line)  
US Route (red line)  
Ramp (red line with blue triangle)  
State Route (thin red line)  
Local Road (black line)  
4WD (dashed black line)

QUADRANGLE LOCATION

Black Hills	San Ignacio Ranch	La Tortuga Butte
Havana Nakya	Pan Tak	San Pedro
San Juan Spring	Rit Peak	Palo Alto Ranch

PAN TAK, AZ  
2011

ADJOINING 7.5 QUADRANGLES