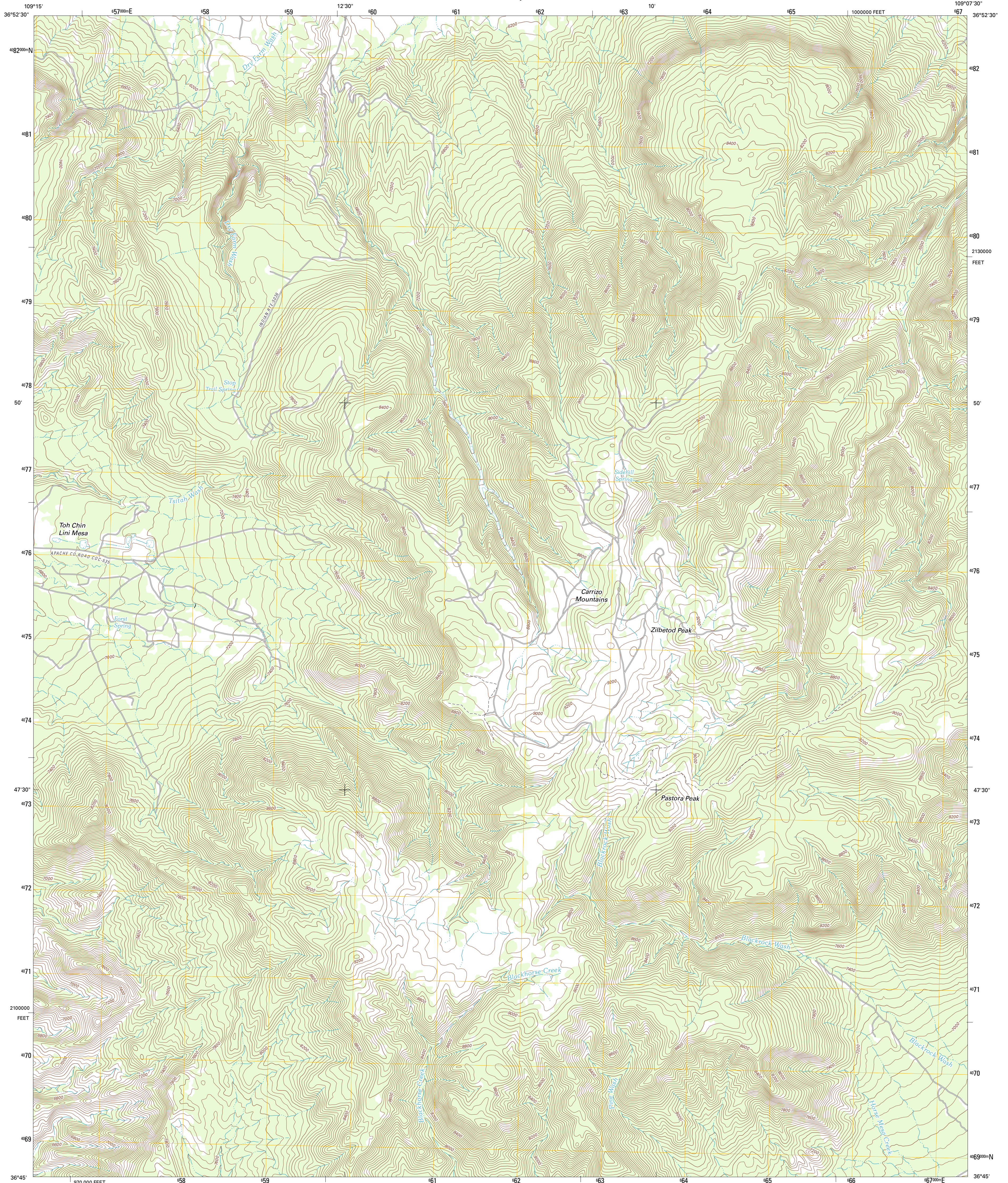




U.S. DEPARTMENT OF THE INTERIOR
U. S. GEOLOGICAL SURVEY

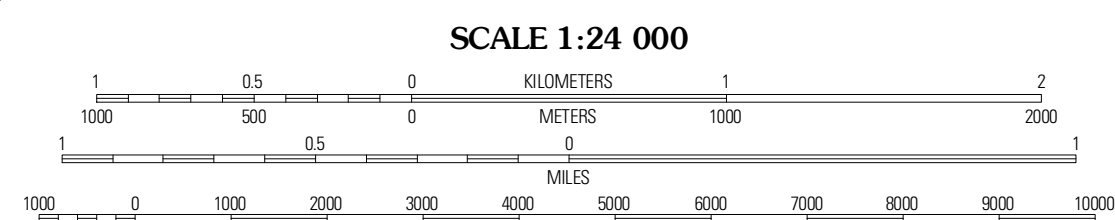
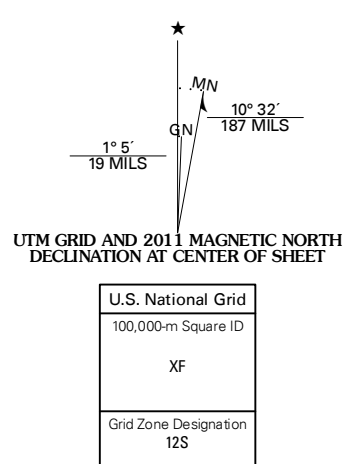


PASTORA PEAK QUADRANGLE
ARIZONA-APACHE CO.
7.5-MINUTE SERIES



Produced by the United States Geological Survey
North American Datum of 1983 (NAD83)
World Geodetic System of 1984 (WGS84) Projection and
1 000-foot ticks: Arizona Coordinate System of 1983 (east zone)

Imagery.....NAP, June 2010
Roads.....©2006-2011 TomTom
Names.....GNIS, 2011
Hydrography.....National Hydrography Dataset, 2007
Contours.....National Elevation Dataset, 1999
Boundaries.....Census, IBWC, IBC, USGS, 1972 - 2010



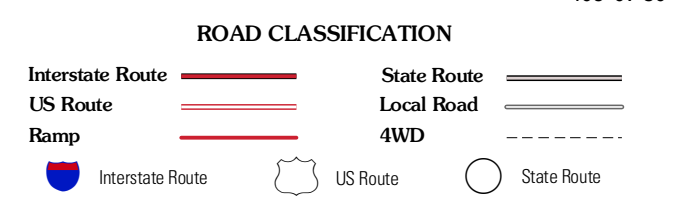
CONTOUR INTERVAL 40 FEET
NORTH AMERICAN VERTICAL DATUM OF 1988

This map was produced to conform with the National Geospatial Program US Topo Product Standard, 2011. A metadata file associated with this product is draft version 0.6.1



QUADRANGLE LOCATION

Toh Atin Mesa East	Cow Butte	Tec Nos Pos
Toh Chin Lini Mesa	Pyson Peak	Beclabito
Kinusta Mesa	Boiling Over Well	Horse Mesa



PASTORA PEAK, AZ
2011

ADJOINING 7.5' QUADRANGLES