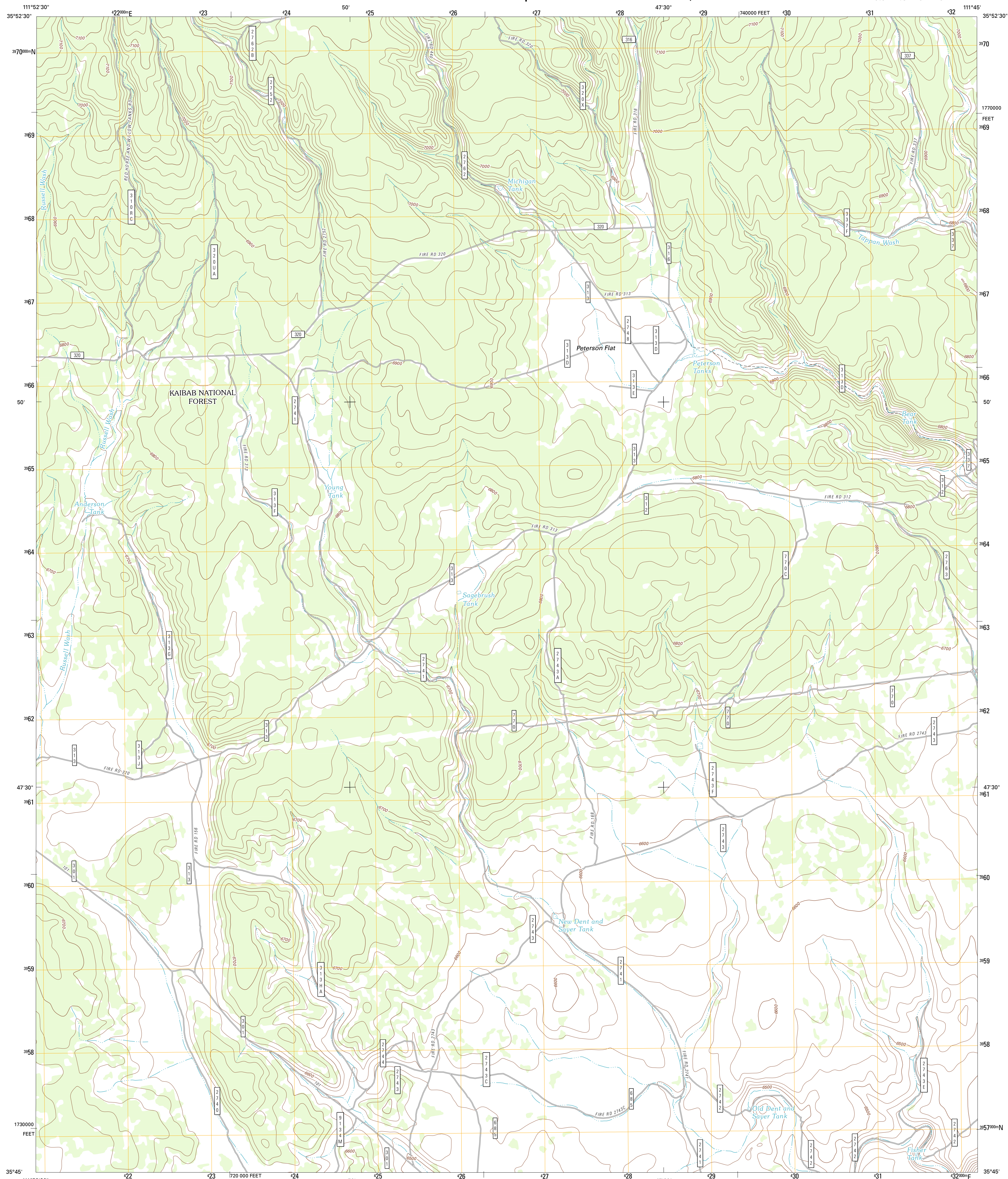




U.S. DEPARTMENT OF THE INTERIOR
U. S. GEOLOGICAL SURVEY

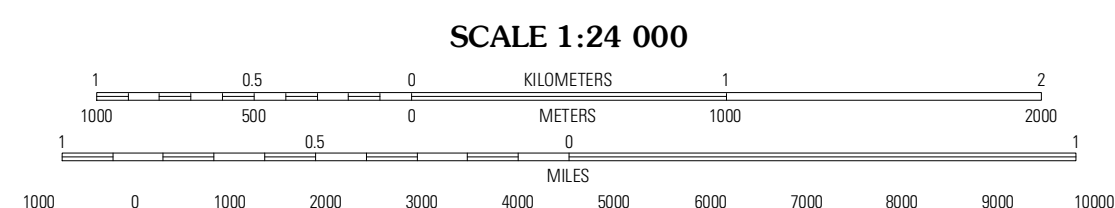
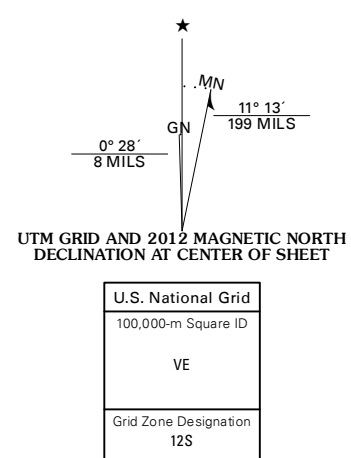


PETERSON FLAT QUADRANGLE
ARIZONA-COCONINO CO.
7.5-MINUTE SERIES



Produced by the United States Geological Survey
North American Datum of 1983 (NAD83)
World Geodetic System of 1984 (WGS84). Projection and
1 000-meter grid: Universal Transverse Mercator, Zone 12S
10 000-foot ticks: Arizona Coordinate System of 1983
(central zone)

Imagery.....NIP, June 2010
Roads.....©2006-2011 TomTom
Roads within US Forest Service Lands.....FSTopo Data
with limited Forest Service updates, 2009
Names.....©GNIS, 2011
Hydrography.....National Hydrography Dataset, 2010
Contours.....National Elevation Dataset, 2000
Boundaries.....Census, IBWC, IBC, USGS, 1972 - 2010



CONTOUR INTERVAL 20 FEET
NORTH AMERICAN VERTICAL DATUM OF 1988
This map was produced to conform with the
National Geospatial Program US Topo Product Standard, 2011.
A metadata file associated with this product is draft version 0.6.1



QUADRANGLE LOCATION

Grandview Point	Grandview Point NE	Hellhole Bend
Harbison Tank	Peterson Flat	Willows Camp
Dog Knobs	Lockwood Canyon	Additional Hill

ROAD CLASSIFICATION

- Interstate Route (thick red line)
- US Route (red line)
- State Route (thin red line)
- Local Road (black line)
- 4WD (dashed black line)
- FS Primary Route (blue line with 'P')
- FS Passenger Route (blue line with 'R')
- FS High Clearance Route (blue line with 'H')

Check with local Forest Service unit for current travel conditions and restrictions.

PETERSON FLAT, AZ
2012

ADJOINING 7.5' QUADRANGLES