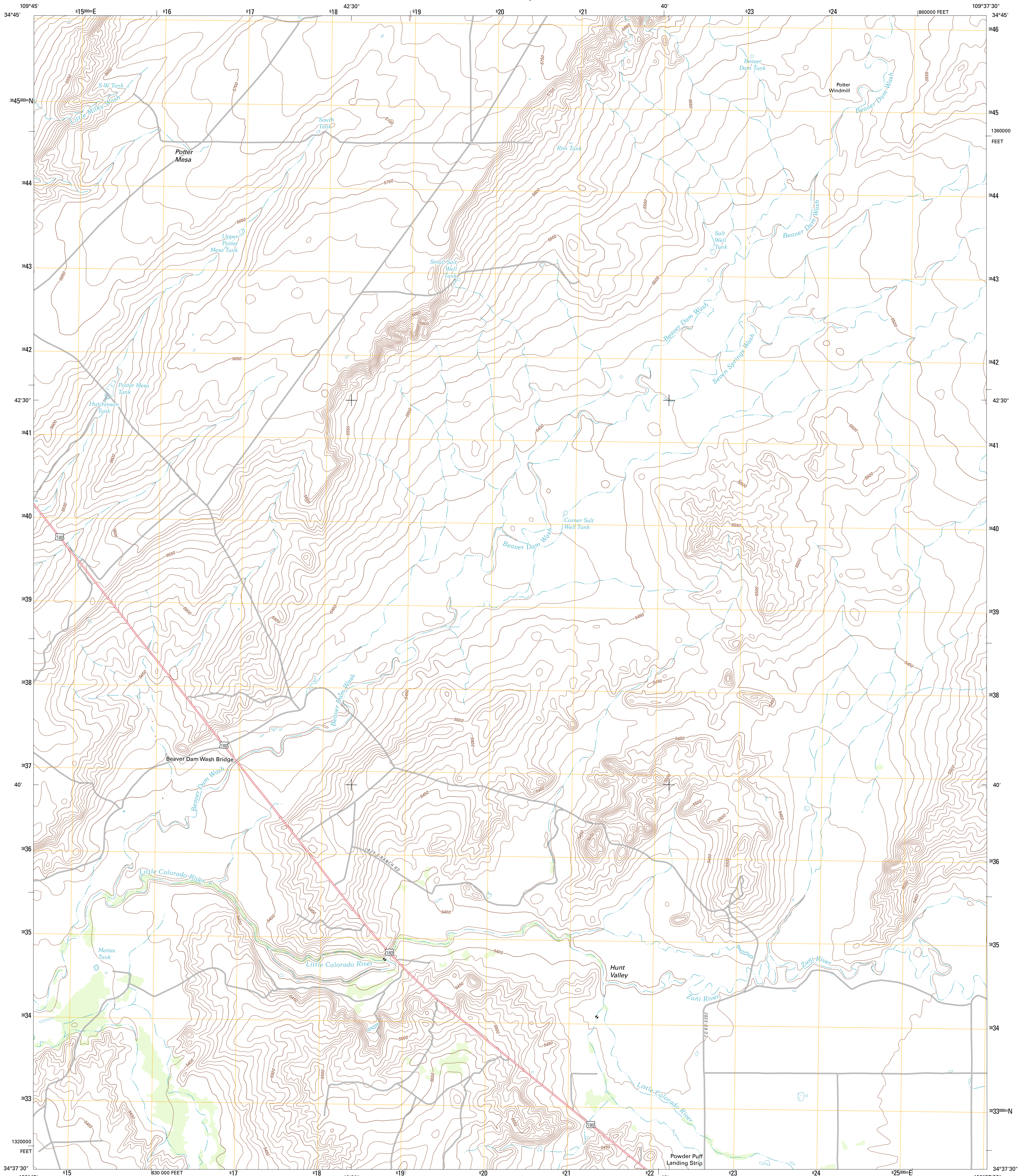




U.S. DEPARTMENT OF THE INTERIOR
U. S. GEOLOGICAL SURVEY

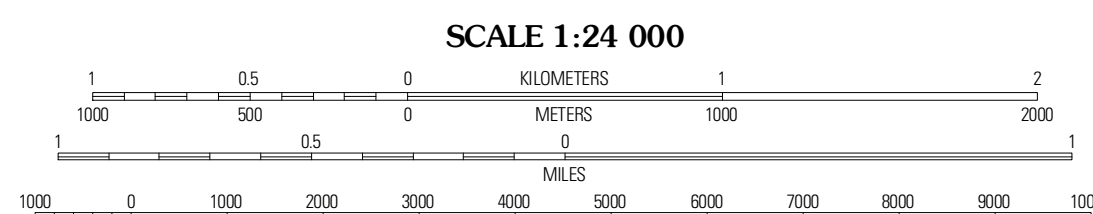
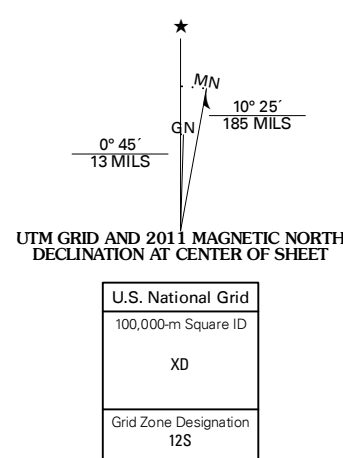


POTTER MESA TANK QUADRANGLE
ARIZONA-APACHE CO.
7.5-MINUTE SERIES



Produced by the United States Geological Survey
North American Datum of 1983 (NAD83)
World Geodetic System of 1984 (WGS84). Projection and
1 000-meter grid: Universal Transverse Mercator, Zone 12S
10 000-foot ticks: Arizona Coordinate System of 1983 (east
zone)

Imagery: NAIP, June 2010
Roads: 2006-2011 TomTom
Names: GNS, 2011
Hydrography: National Hydrography Dataset, 2007
Contours: National Elevation Dataset, 2000
Boundaries: Census, IBWC, IBC, USGS, 1972-2010

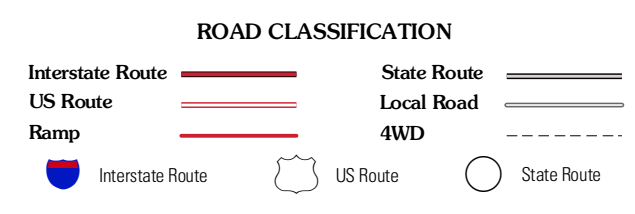


SCALE 1:24 000
CONTOUR INTERVAL 10 FEET
NORTH AMERICAN VERTICAL DATUM OF 1988
This map was produced to conform with the
National Geospatial Program US Topo Product Standard, 2011.
A metadata file associated with this product is draft version 0.6.1



QUADRANGLE LOCATION

Agate House	Milky Ranch	Seven Springs
Little Milky Wash	Potter Mesa Tank	Sinking Springs Mountain
Manuel Seep	Hunt	Sinking Springs



POTTER MESA TANK, AZ
2011

ADJOINING 7.5 QUADRANGLES