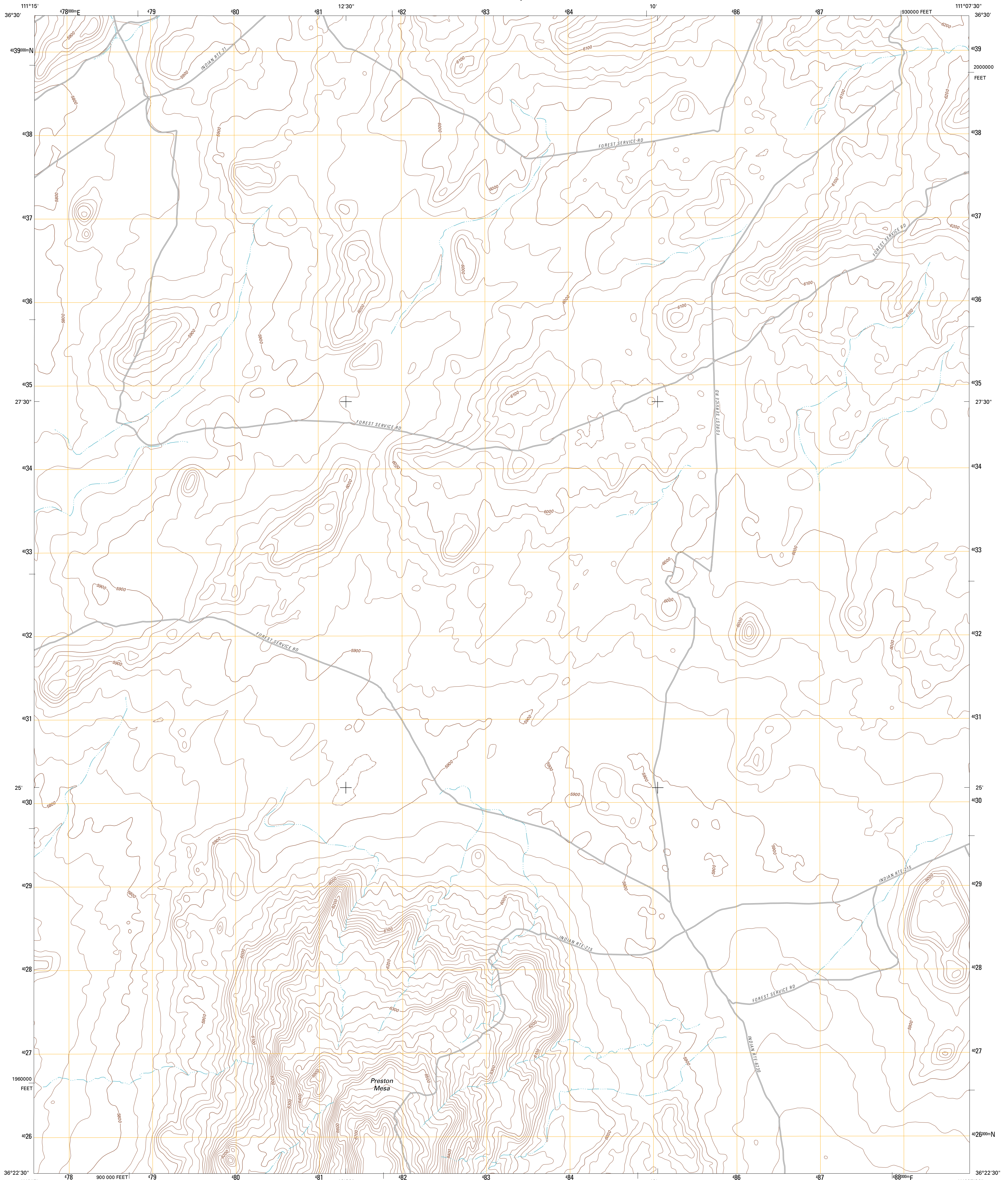




U.S. DEPARTMENT OF THE INTERIOR  
U. S. GEOLOGICAL SURVEY

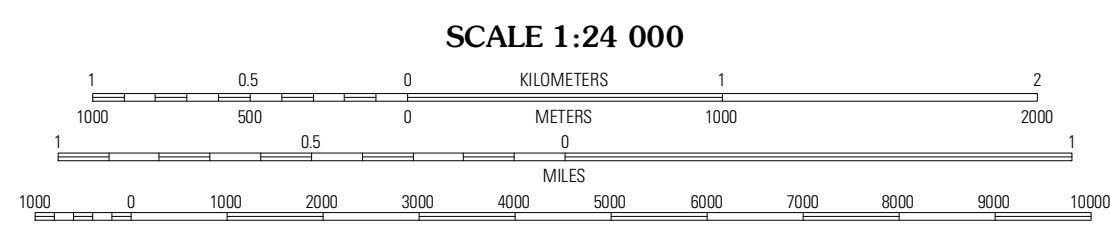
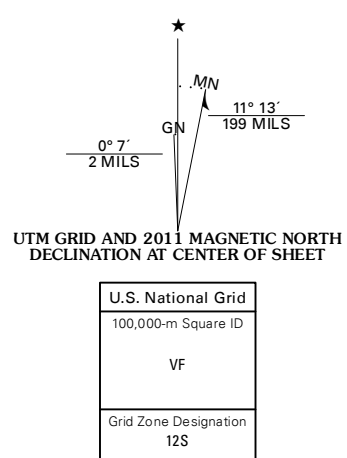


PRESTON MESA NORTH QUADRANGLE  
ARIZONA-COCONINO CO.  
7.5-MINUTE SERIES



Produced by the United States Geological Survey  
North American Datum of 1983 (NAD83)  
World Geospatial System of 1984 (WGS84). Projection and  
1 000-meter grid: Universal Transverse Mercator, Zone 12S  
10 000-foot ticks: Arizona Coordinate System of 1983  
(central zone)

Imagery: NAIP, June 2010  
Roads: ©2006-2011 TomTom  
Names: GNS, 2011  
Hydrography: National Hydrography Dataset, 2010  
Contours: National Elevation Dataset, 1999  
Boundaries: Census, BWC, IBC, USGS, 1972 - 2010

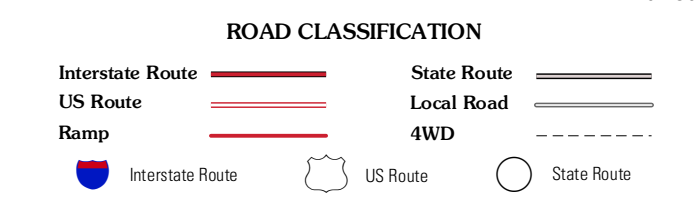


SCALE 1:24 000  
CONTOUR INTERVAL 20 FEET  
NORTH AMERICAN VERTICAL DATUM OF 1988  
This map was produced to conform with the  
National Geospatial Program US Topo Product Standard, 2011.  
A metadata file associated with this product is draft version 0.6.1



QUADRANGLE LOCATION

Dove Spring SE	Arrowhead Mesa	Kaibito
Sitting Coyote Hill	Preston Mesa North	Big Whisker Well
Preston Well	Preston Mesa South	Gopher Spring



PRESTON MESA NORTH, AZ  
2011

ADJOINING 7.5' QUADRANGLES