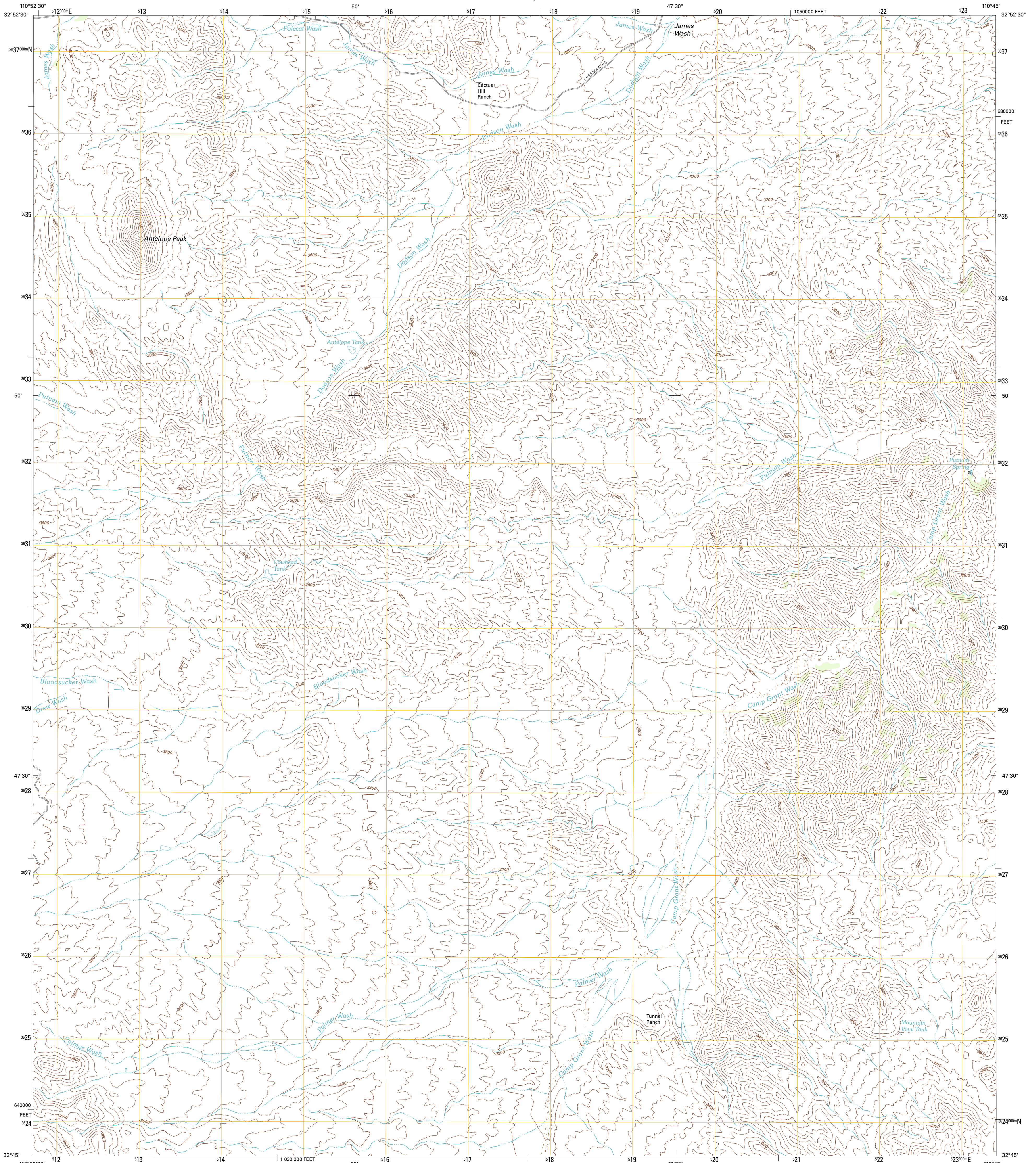




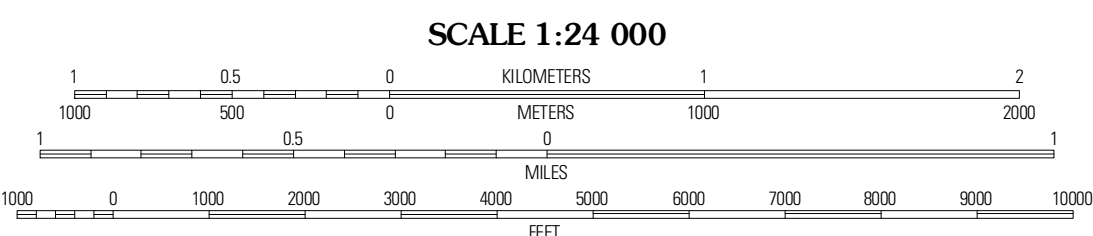
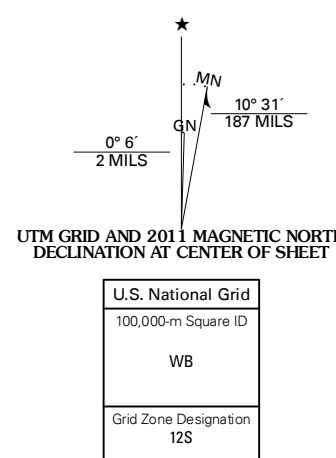
U.S. DEPARTMENT OF THE INTERIOR
U. S. GEOLOGICAL SURVEY



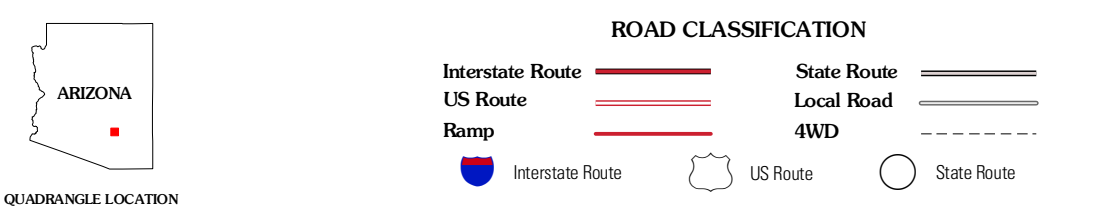
PUTNAM WASH QUADRANGLE
ARIZONA-PINAL CO.
7.5-MINUTE SERIES



Produced by the United States Geological Survey
North American Datum of 1983 (NAD83)
World Geodetic System of 1984 (WGS84). Projection and
10 000-foot ticks: Arizona Coordinate System of 1983
(central zone)



CONTOUR INTERVAL 40 FEET
NORTH AMERICAN VERTICAL DATUM OF 1988
This map was produced to conform with the
National Geospatial Program US Topo Product Standard, 2011.
A metadata file associated with this product is draft version 0.6.1



QUADRANGLE LOCATION

Crozier Peak	Winkelman	Dudleyville
Black Mountain	Putnam Wash	Lookout Mountain
Fortified Peak	North of Oracle	Mammoth

PUTNAM WASH, AZ
2011

ADJOINING 7.5 QUADRANGLES