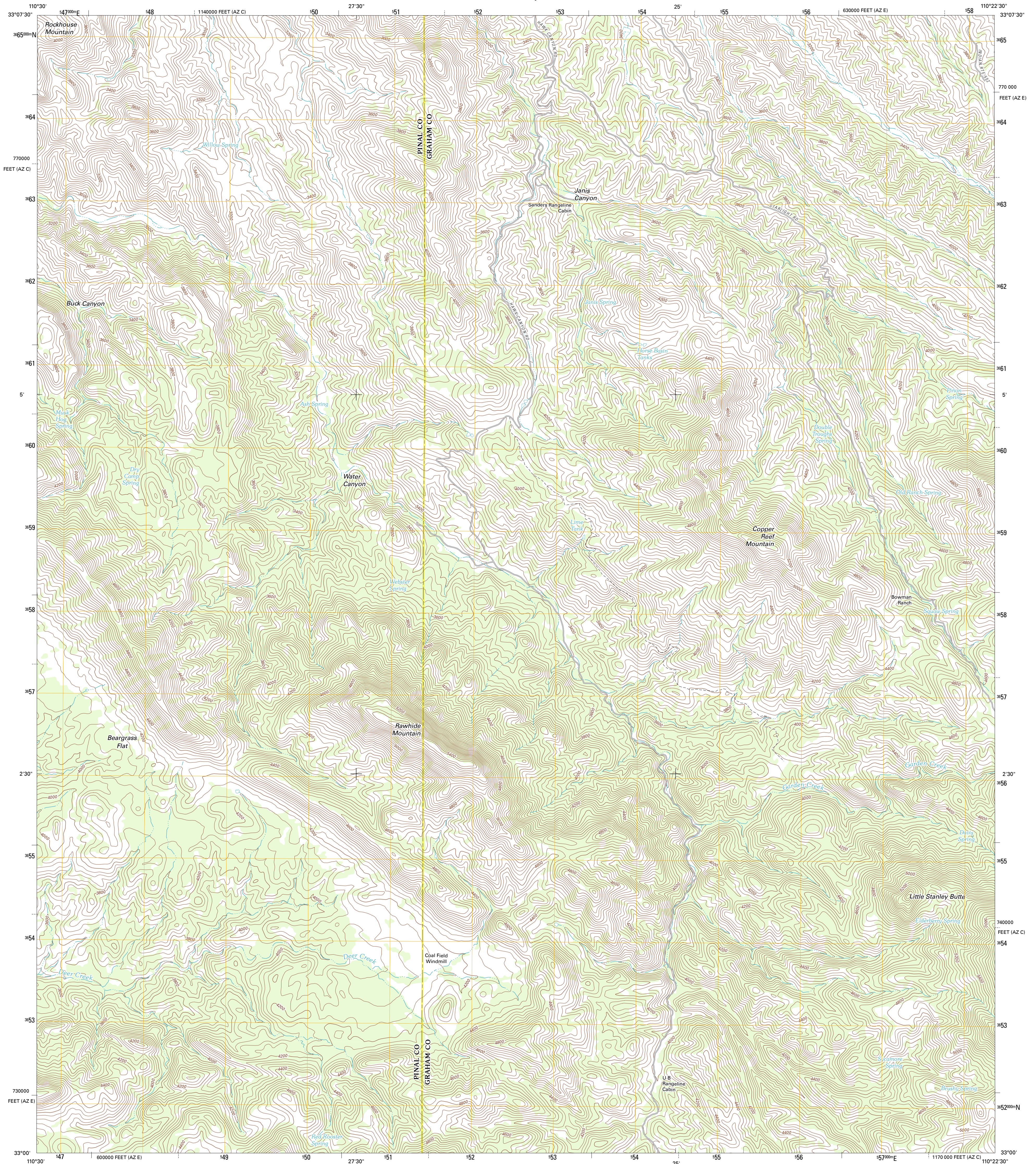




U.S. DEPARTMENT OF THE INTERIOR
U. S. GEOLOGICAL SURVEY

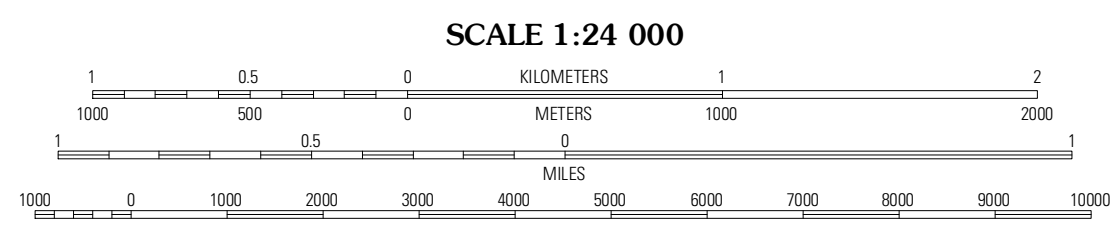
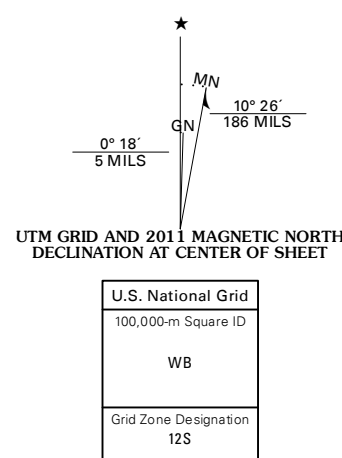


RAWHIDE MOUNTAIN QUADRANGLE
ARIZONA
7.5-MINUTE SERIES

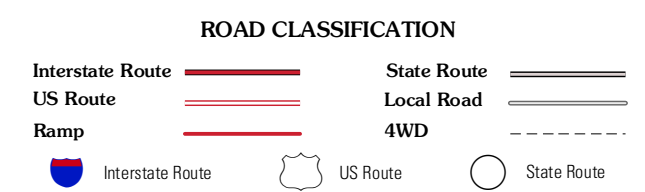
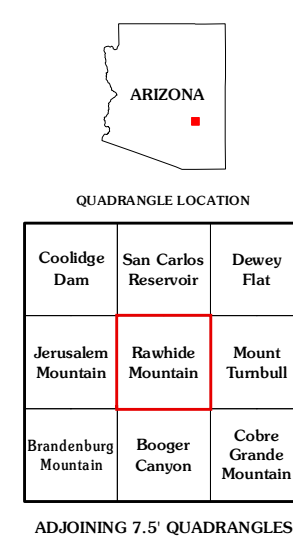


Produced by the United States Geological Survey
North American Datum of 1983 (NAD83)
World Geodetic System of 1984 (WGS84). Projection and
1 000-meter grid: Universal Transverse Mercator, Zone 12S
10 000-foot ticks: Arizona Coordinate System of 1983 (east
and central zones)

Imagery.....NAIP, August 2010 - September 2010
Roads.....©2006-2011 TomTom
Names.....GNIS, 2011
Hydrography.....National Hydrography Dataset, 2010
Contours.....National Elevation Dataset, 2002
Boundaries.....Census, IBWC, IBC, USGS, 1972 - 2010



CONTOUR INTERVAL 40 FEET
NORTH AMERICAN VERTICAL DATUM OF 1988
This map was produced to conform with the
National Geospatial Program US Topo Product Standard, 2011.
A metadata file associated with this product is draft version 0.6.1



| QUADRANGLE LOCATION | | |
|----------------------|----------------------|-----------------------|
| Coolidge Dam | San Carlos Reservoir | Dewey Flat |
| Jerusalem Mountain | Rawhide Mountain | Mount Turnbull |
| Brandenburg Mountain | Booger Canyon | Cobre Grande Mountain |

RAWHIDE MOUNTAIN, AZ
2011

ADJOINING 7.5' QUADRANGLES