



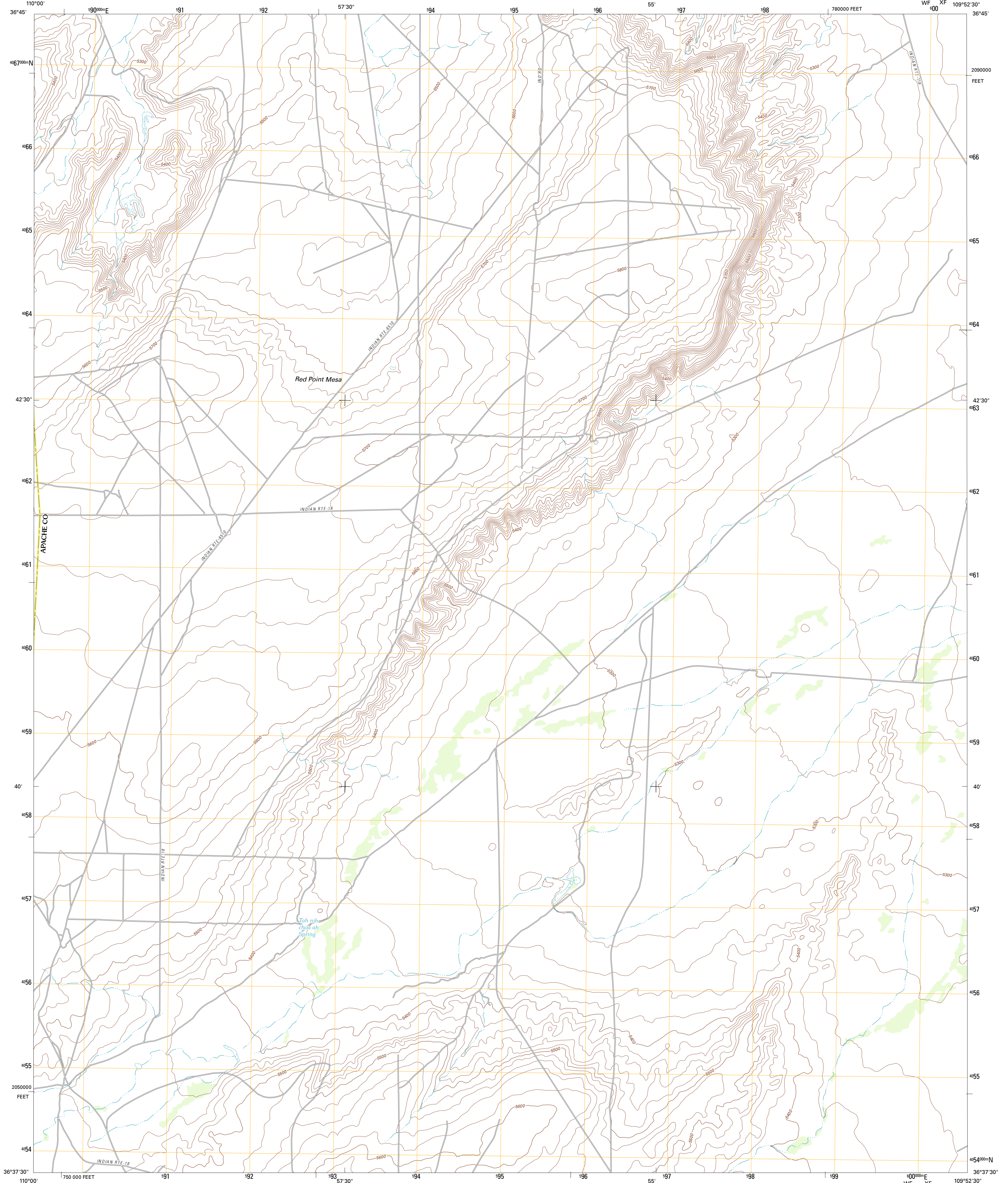
U.S. DEPARTMENT OF THE INTERIOR
U. S. GEOLOGICAL SURVEY



RED POINT MESA QUADRANGLE
ARIZONA

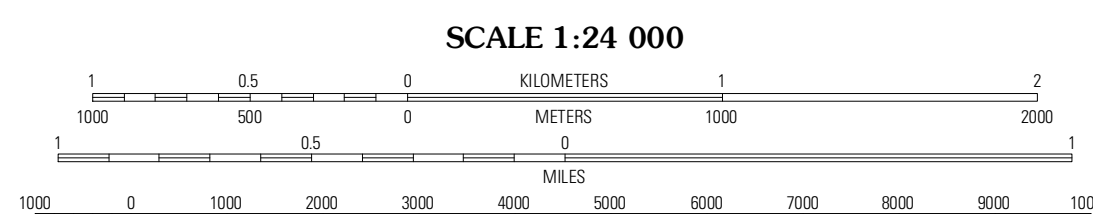
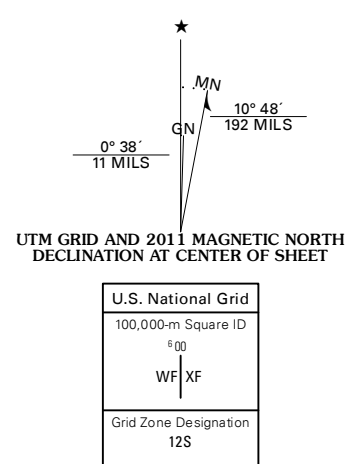
7.5-MINUTE SERIES

WF XF



Produced by the United States Geological Survey
North American Datum of 1983 (NAD83)
World Geodetic System of 1984 (WGS84) Projection and
1 000-meter grid; Universal Transverse Mercator, Zone 12S
10 000-foot ticks; Arizona Coordinate System of 1983 (east zone)

Imagery.....NAIP, June 2010
Roads.....©2006-2011 TomTom
Names.....GNIS, 2011
Hydrography.....National Hydrography Dataset, 2010
Contours.....National Elevation Dataset, 1999
Boundaries.....Census, IBWC, IBC, USGS, 1972 - 2010

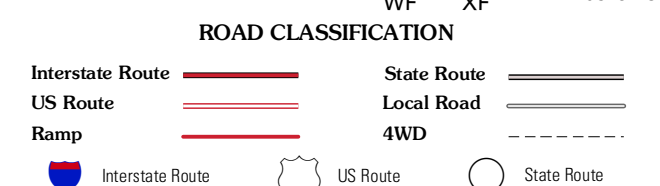


CONTOUR INTERVAL 20 FEET
NORTH AMERICAN VERTICAL DATUM OF 1988
This map was produced to conform with the
National Geospatial Program US Topo Product Standard, 2011.
A metadata file associated with this product is draft version 0.6.1



QUADRANGLE LOCATION

Baby Rocks	Red Point	Dennehotso
Church Rock	Red Point Mesa	Tall Mesa
Chilchibito	Sweetwater Mesa	White Point



RED POINT MESA, AZ
2011

ADJOINING 7.5' QUADRANGLES