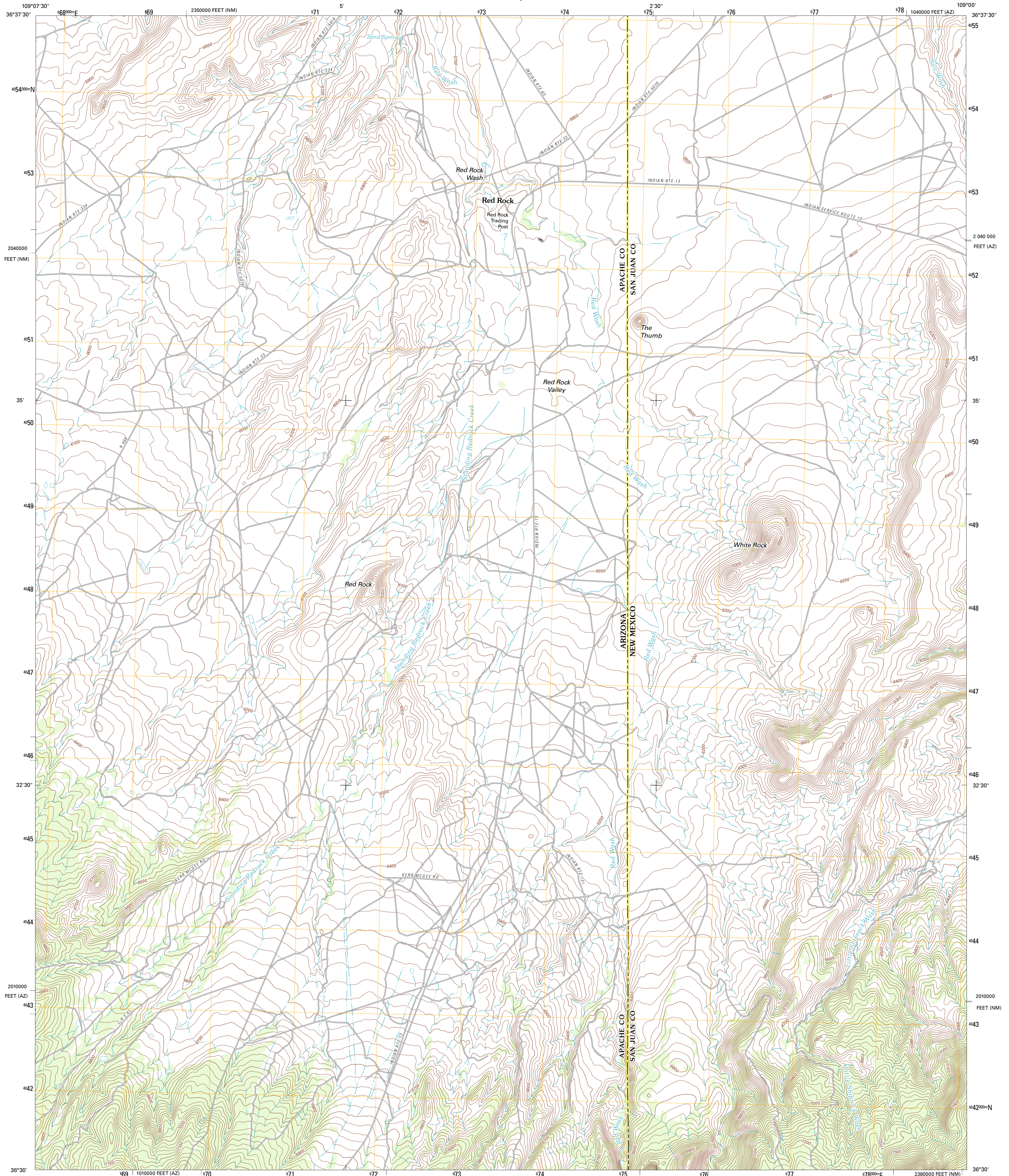




U.S. DEPARTMENT OF THE INTERIOR
U. S. GEOLOGICAL SURVEY

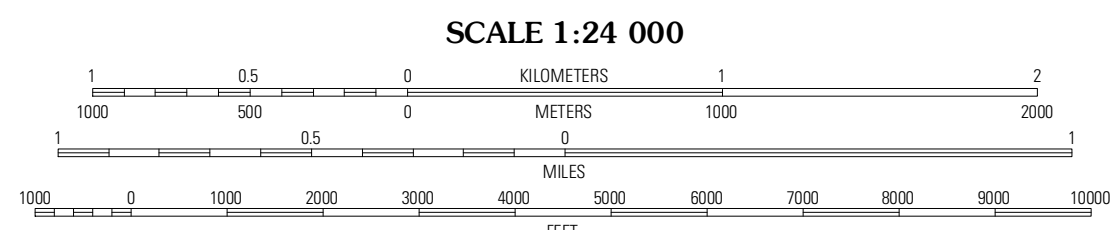
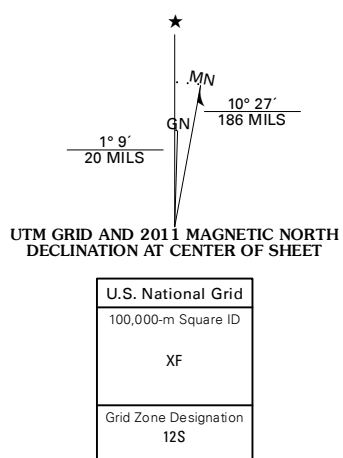


RED VALLEY QUADRANGLE
ARIZONA-NEW MEXICO
7.5-MINUTE SERIES



Produced by the United States Geological Survey
North American Datum of 1983 (NAD83)
World Geodetic System of 1984 (WGS84). Projection and
1 000-foot ticks: Arizona Coordinate System of 1983 (east
zone), New Mexico Coordinate System of 1983 (west zone)

Images: NAD, June 2010
Roads: 2006-2011 TomTom
Names: GNS, 2011
Hydrography: National Hydrography Dataset, 2010
Contours: National Elevation Dataset, 1999
Boundaries: Census, BWC, BIC, USGS, 1972 - 2010



CONTOUR INTERVAL 20 FEET
NORTH AMERICAN VERTICAL DATUM OF 1988

This map was produced to conform with the
National Geospatial Program US Topo Product Standard, 2011.
A metadata file associated with this product is draft version 0.6.1



QUADRANGLE LOCATION

Boiling Over Well	Horse Mesa	Sand Spring
Cove	Red Valley	Mitten Rock
Lukachukai	Roof Butte	Sanostee West

ROAD CLASSIFICATION

Interstate Route	State Route
US Route	Local Road
Ramp	4WD

RED VALLEY, AZ-NM
2011