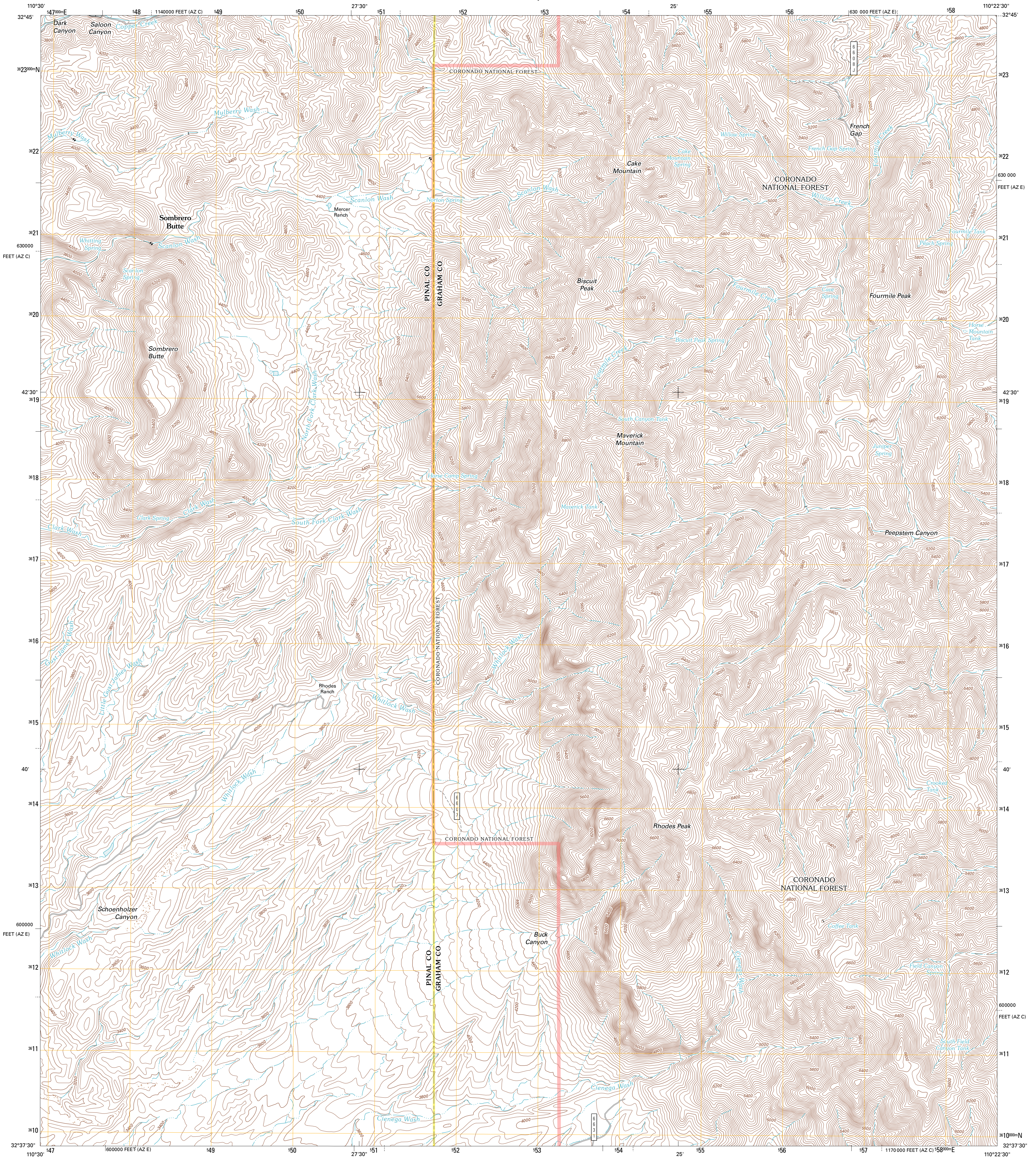




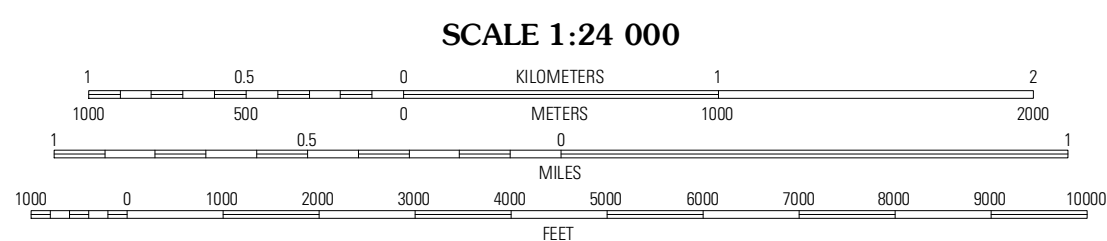
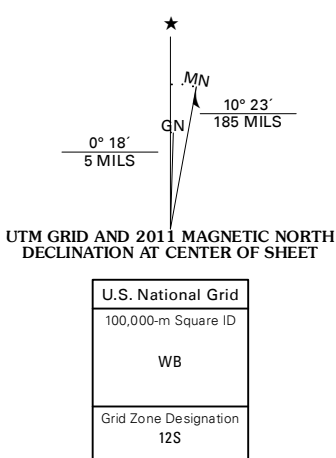
U.S. DEPARTMENT OF THE INTERIOR
U. S. GEOLOGICAL SURVEY



RHODES PEAK QUADRANGLE
ARIZONA
7.5-MINUTE SERIES



Produced by the United States Geological Survey
North American Datum of 1983 (NAD83)
World Geodetic System of 1984 (WGS84) Projection and
1 000-meter grid: Universal Transverse Mercator, Zone 12S
10 000-foot ticks: Arizona Coordinate System of 1983 (east
and central zones)



CONTOUR INTERVAL 40 FEET
NORTH AMERICAN VERTICAL DATUM OF 1988
This map was produced to conform with the
National Geospatial Program US Topo Product Standard, 2011.
A metadata file associated with this product is draft version 0.6.1

Imagery.....NAP, August 2010 - September 2010
Roads.....©2006-2011 TomTom
Roads within US Forest Service Lands.....FSTopo Data
with limited Forest Service updates, 2009
Names.....GNIS, 2011
Hydrography.....National Hydrography Dataset, 2010
Contours.....National Elevation Dataset, 2002
Boundaries.....Census, IBWC, IBC, USGS, 1972 - 2010

U.S. National Grid	100,000-m Square ID
WB	
Grid Zone Designation	12S



QUADRANGLE LOCATION

Holy Joe Peak	Oak Grove Canyon	Klondike
Clark Ranch	Rhodes Peak	Kennedy Peak
Peppersauce Wash	Kaulberg Canyon	Bassett Peak

ROAD CLASSIFICATION

Interstate Route	State Route
US Route	Local Road
FS Primary Route	FS Passenger Route
FS High Clearance Route	

Check with local Forest Service unit
for current travel conditions and restrictions.

RHODES PEAK, AZ
2011

ADJOINING 7.5' QUADRANGLES