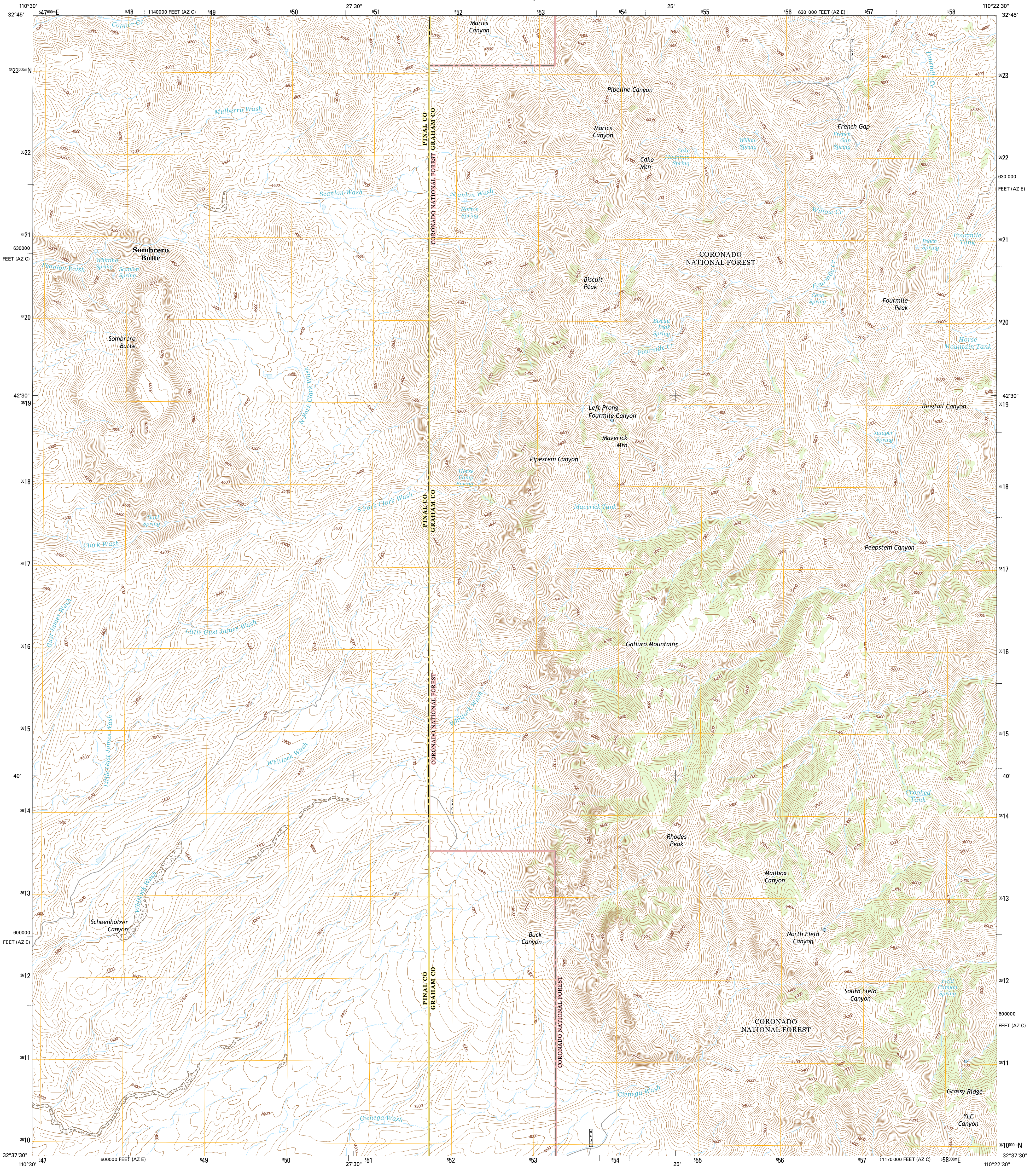




U.S. DEPARTMENT OF THE INTERIOR  
U.S. GEOLOGICAL SURVEY



RHODES PEAK QUADRANGLE  
ARIZONA  
7.5-MINUTE SERIES

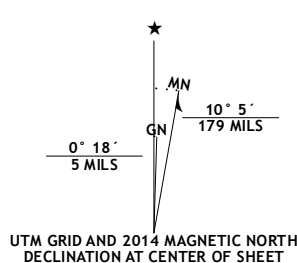


Produced by the United States Geological Survey

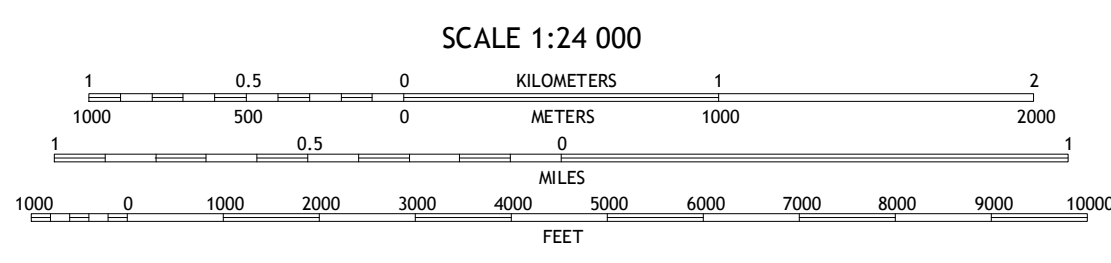
North American Datum of 1983 (NAD83)  
World Geodetic System of 1984 (WGS84). Projection and  
1 000-meter grid: Universal Transverse Mercator, Zone 12S  
10 000-foot ticks: Arizona Coordinate System of 1983 (east and  
central zones)

This map is not a legal document. Boundaries may be  
generalized for this map scale. Private lands within government  
reservations may not be shown. Obtain permission before  
entering private lands.

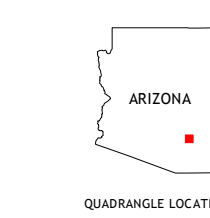
Imagery.....NAIP, June 2013  
Roads.....HERE, ©2013  
Roads within US Forest Service Lands.....FS Topo Data  
with limited Forest Service updates, 2013  
Names.....GNIS, 2013  
Hydrography.....National Hydrography Dataset, 2013  
Contours.....National Elevation Dataset, 2002  
Boundaries.....Multiple sources; see metadata file 1972-2014  
Public Land Survey System.....BLM, 2011



U.S. National Grid
100,000-m Square ID
WB
Grid Zone Designation
12S



CONTOUR INTERVAL 40 FEET  
NORTH AMERICAN VERTICAL DATUM OF 1988  
This map was produced to conform with the  
National Geospatial Program US Topo Product Standard, 2011.  
A metadata file associated with this product is draft version 0.6.16



QUADRANGLE LOCATION

ROAD CLASSIFICATION	
Expressway	Local Connector
Secondary Hwy	Local Road
Ramp	4WD
Interstate Route	US Route
FS Primary Route	FS Passenger Route
	FS High Route
	Clearance Route

Check with local Forest Service unit  
for current travel conditions and restrictions.

1	2	3	1 Holy Joe Peak
4	5	6	2 Oak Grove Canyon
6	7	8	3 Hironaka
			4 Clark Ranch
			5 Kennedy Peak
			6 Peppersauce Wash
			7 Kietberg Canyon
			8 Bassett Peak

ADJOINING QUADRANGLES

RHODES PEAK, AZ  
2014

